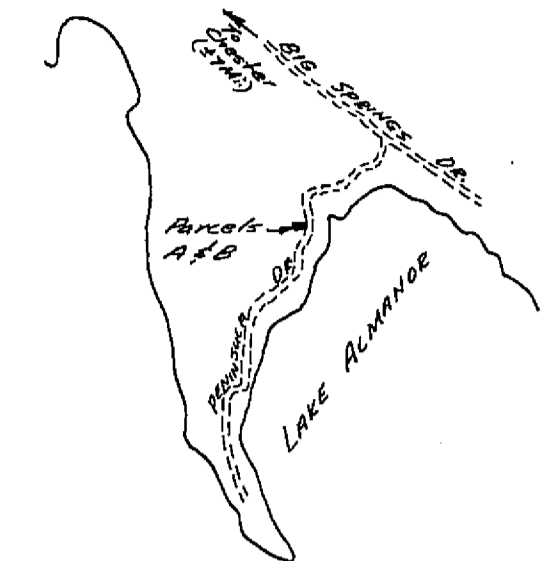


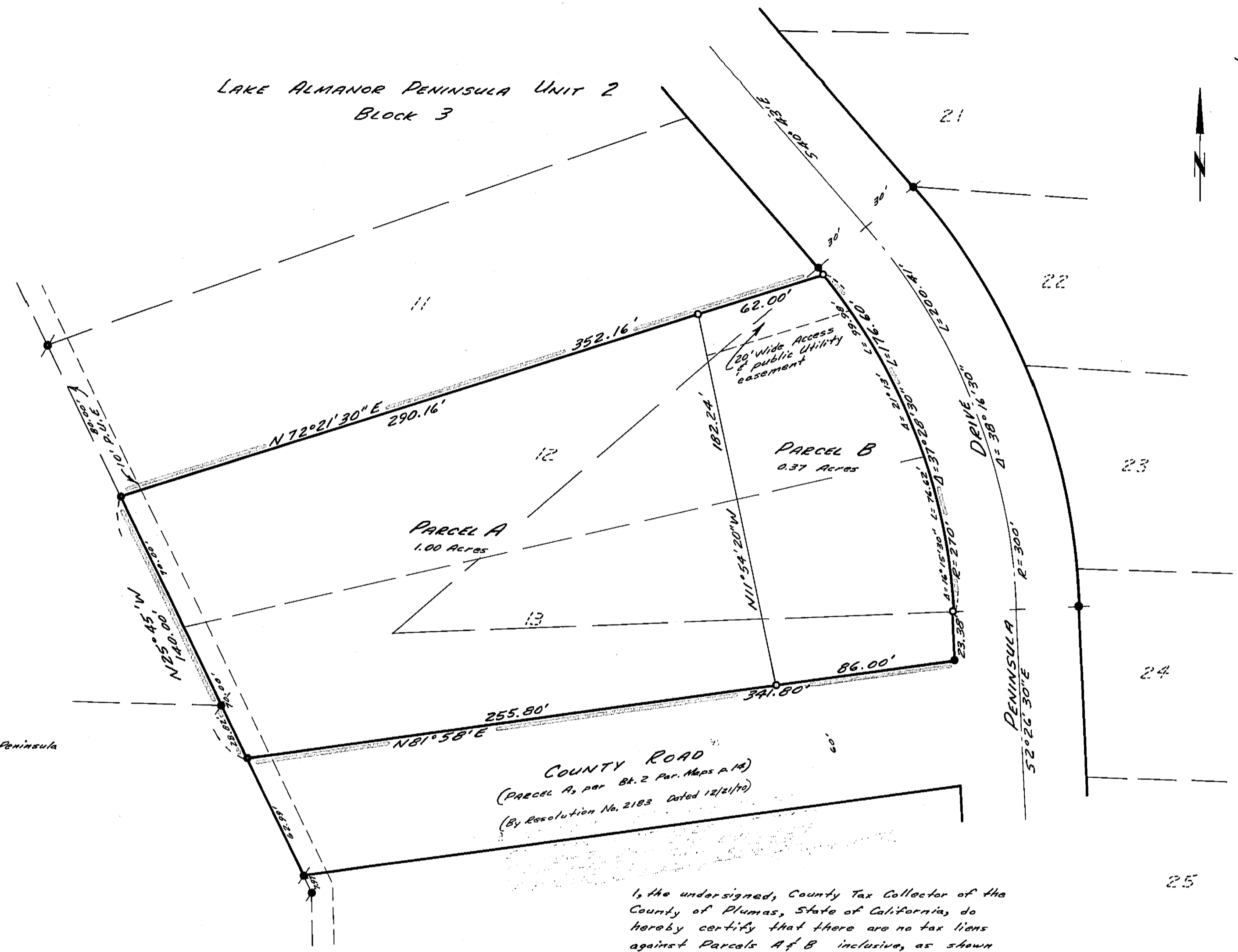


SCALE: 1" = 40'

Basis of Bearings is the Record Map for Lake Almanor Peninsula Unit 2 filed in Book 1 of Maps at Page 61.



VICINITY MAP  
Scale: 1" = 2 Miles



LEGEND

- Found 3/4" iron pipe per Lake Almanor Peninsula Unit 2 (Bk. 1 of Maps p. 61).
- Found 3/4" iron pipe tagged "L.S. 3202".
- Set 3/4" iron pipe tagged "L.S. 3202".

CERTIFICATES:

This map was prepared by me or under my direction, and was compiled from a field survey in conformance with the requirements of the Subdivision Map Act at the request of Jerry Leavy in April 1973. I hereby certify that it conforms to the approved tentative map and the conditions of approval thereof; that all provisions of applicable state laws and local ordinances have been...

Paul E. Simpson  
Paul E. Simpson, Licensed Land Surveyor  
No. 3202  
STATE OF CALIFORNIA

This map has been examined this 30<sup>th</sup> day of July, 1973 for conformance with the requirements of Section 11575 of the Subdivision Map Act.

Darrell P. Payne  
Darrell P. Payne, R.C.S. 6854, Plumas County Surveyor

I, the undersigned, County Tax Collector of the County of Plumas, State of California, do hereby certify that there are no tax liens against Parcels A & B inclusive, as shown hereon, or unpaid state, county, municipal, or local taxes, or special assessments collected as taxes, except taxes or assessments not yet payable. Taxes or assessments which are a lien but not yet payable are estimated to be in the amount of \$1,668.<sup>54</sup>

Douglas J. Redstreake  
Douglas J. Redstreake, Plumas County Tax Collector

Filed for record this 30<sup>th</sup> day of July, 1973 at 3:10 P.M. in Book 1 of Parcel Maps at Page 38 at the request of Paul E. Simpson.  
Fee: \$5.<sup>00</sup> File No. 876

Dorothy New Marley  
Dorothy New Marley, Plumas County Recorder

PARCEL MAP FOR  
JERRY LEAVY

LOTS 12 & 13, BLOCK 3, LAKE ALMANOR PENINSULA UNIT 2, PLUMAS COUNTY, CALIFORNIA

SCALE: 1" = 40'

PAUL E. SIMPSON, & ASSOCIATES, ENGINEERS & SURVEYORS  
L.S. 3202, 45 S. ROOP ST., SUSANVILLE, CALIF.