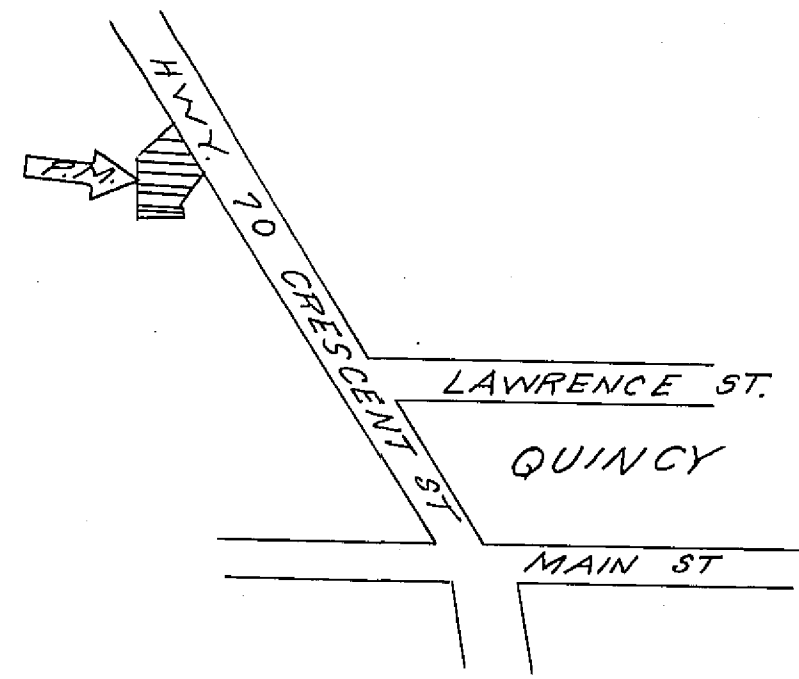


CURVE DATA

	Δ	R	L	T	C	BEARING
1	1°08'50"	2050	41.05	2052	41.05	S.32°28'31"E.
2	1°13'12"	2050	43.66	21.83	43.65	S.33°19'32"E.
3	0°20'52"	2050	12.45	6.22	12.45	S.34°06'34"E.



- LEGEND**
- Found monuments as noted
 - Set 1/2" Steel Pin with plastic cap stamped R.C.E. 11173
 - Rec. Record (from deed, record map, etc)
 - Meas. Measured
 - O.R. Official Records, Plumas Co. records
 - Fd. Found
 - I.P. Iron Pipe
 - I.P. & T. Iron Pipe and Tag
 - R/W Right-of-Way
 - R/S Record of Survey
 - Ac. Acre
 - W.C. Witness Corner

- NOTES**
1. Tentative Parcel Map approved by Plumas Co. Planning Commission June 11, 1973.
 2. Bearings are grid bearings, Calif. State Coordinate System, Zone 1.
 3. Distances are ground distances. Multiply by 0.99985 to convert to grid distances.
 4. Basis of Bearings derived from Calif. Div. of Hys. coordinated monuments.

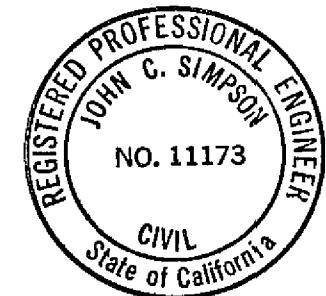
COUNTY TAX COLLECTOR'S CERTIFICATE

I, the undersigned, County Tax Collector of the County of Plumas, State of California, do hereby certify that there are no tax liens against Parcels 1A, 1B, and 1C as shown hereon or unpaid state, county, municipal, or local taxes, or spl. assessments collected as taxes, except taxes or assessments not yet payable. Taxes or assessments which are a lien but not yet payable, are estimated to be in the amount of \$2700.00.

Douglas S. Redstredke
 Douglas S. Redstredke
 Plumas County Tax Collector
By Lisa Alexander, Deputy

SURVEYOR'S CERTIFICATE

This map was prepared by me or under my direction (and is based upon a field survey) in conformance with the subdivision Map Act at the request of Standard Oil Co. of Calif., July 19, 1973. I hereby certify that it conforms to the approved tentative map and the conditions of approval thereof; that all provisions of applicable state law and local ordinances have been complied with.



John C. Simpson
 John C. Simpson
 R.C.E. 11173

PARCEL MAP
 OF
SUBDIVISION OF ONE PARCEL
 FOR

STANDARD OIL CO. OF CALIFORNIA
 BEING ACQUIRED FROM RECORD OWNERS:
 1A - ORVILLE HOWARD AND ELISABETH BASORE
 1B - C. D. AND HAZEL MITCHEM
 1C - ALICE NORTON
 WITHIN
 LOT 1 BLOCK 2, TOWN OF QUINCY
 PLUMAS COUNTY, CALIFORNIA

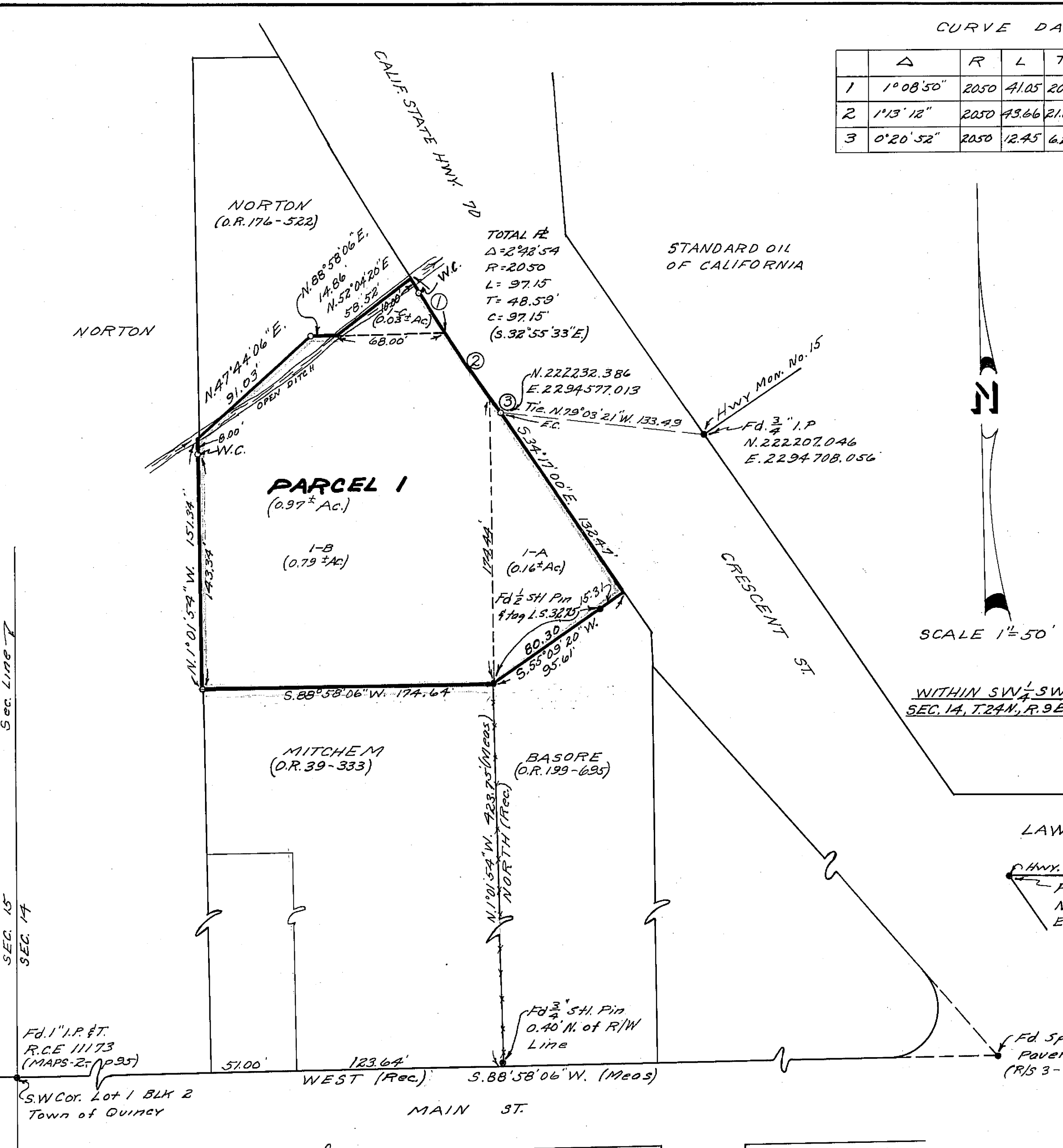
COUNTY SURVEYOR'S CERTIFICATE

This map has been examined this 27th day of August, 1973, for conformance with the requirements of Section 11575 of the Subdivision Map Act.
Danell P. Payne
 Plumas County Surveyor

RECORDER'S CERTIFICATE

Filed this 31st day of August, 1973, at 3:15 P.M. in Book 4 of Parcel Maps at Page 43 at the request of John C. Simpson.
Dorothy New Marley
 Plumas County Recorder

Fee \$5.00
 File No. 1347



DAVIS ST.

BUCHANAN ST.