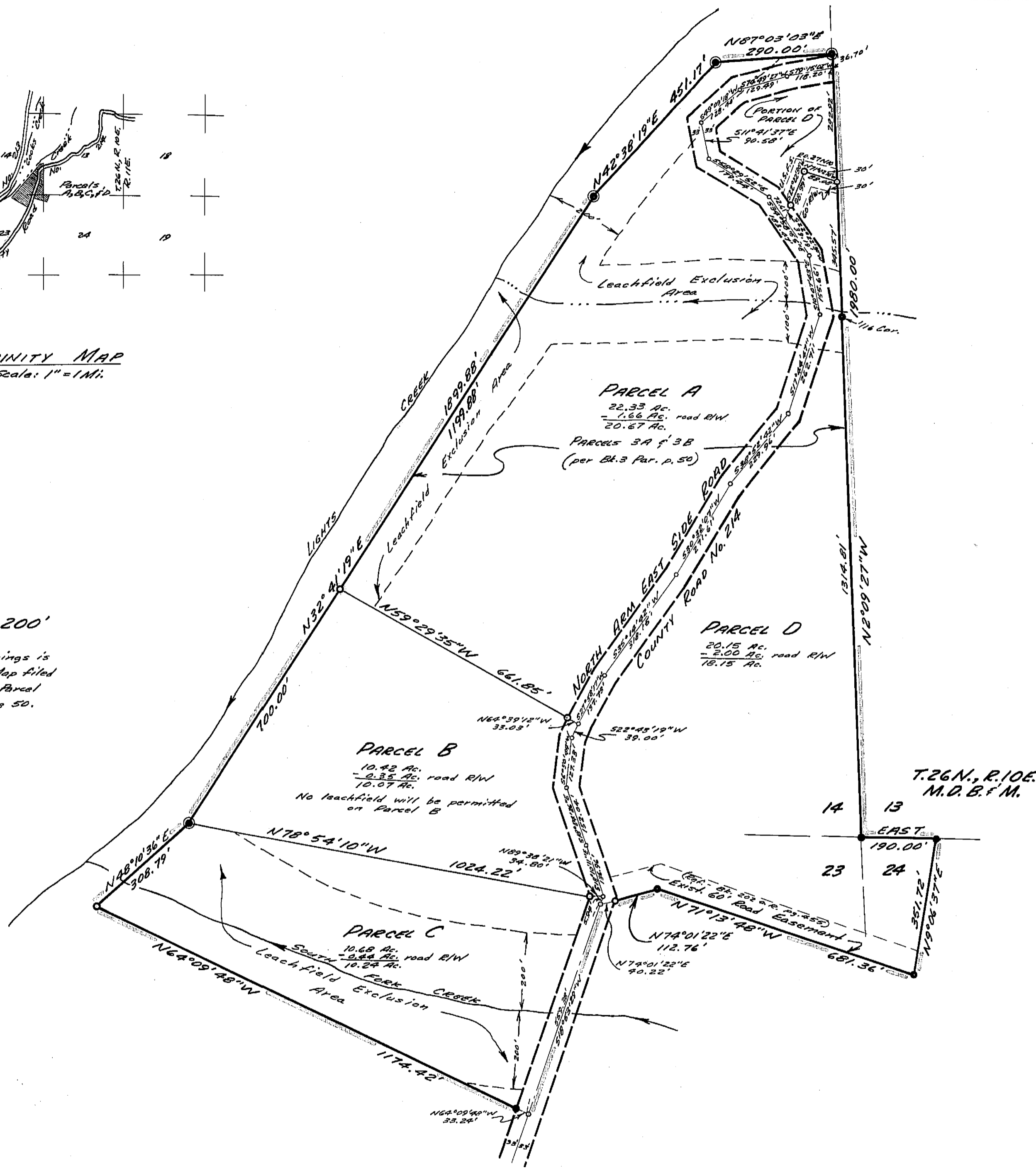


VICINITY MAP
Scale: 1" = 1 Mi.

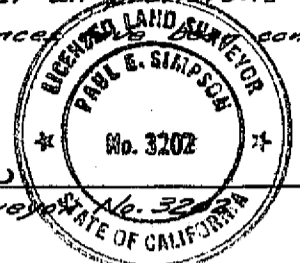
SCALE: 1" = 200'

Basis of Bearings is the Parcel Map filed in Book 3 of Parcel Maps at page 50.



CERTIFICATES:

This map was prepared by me or under my direction, and was compiled from a field survey in conformance with the requirements of the Subdivision Map Act at the request of Louis J. Albares & James R. Smith in May, 1973. I hereby certify that it conforms to the approved tentative map and the conditions of approval thereof; that all provisions of applicable state laws & local ordinances have been complied with.



Paul E. Simpson
Paul E. Simpson, Licensed Land Surveyor

This map has been examined this 18th day of Sept, 1973 for conformance with the requirements of Section 11575 of the Subdivision Map Act.

Darrell P. Payne

Darrell P. Payne, Plumas County Surveyor, R.C.E. 8596

Filed for record this 18th day of September, 1973 at 10:55 A.M. in Book 4 of Parcel Maps at page 45 at the request of Paul E. Simpson.

Fee \$5.⁰⁰ File No. 1764

Dorothy Neer Marley

Dorothy Neer Marley, Plumas County Recorder

I, the undersigned County Tax Collector of the County of Plumas, State of California, do hereby certify that there are no tax liens against Parcels A, B, C, or D, as shown hereon, or unpaid state, county, municipal or local taxes or special assessments collected as taxes, except taxes or assessments not yet payable. Taxes or assessments which are a lien but not yet payable, are estimated to be in the amount of \$745.⁰⁰.

Douglas S. Redstreak
Douglas S. Redstreak, Plumas County Tax Collector

LEGEND

- Found 3/4" iron pipe tagged "R.C.E. 7294" per Bk. 3 Par. Maps p. 50.
- Found 3/4" iron pipe tagged "R.C.E. 13325"
- Set 3/4" iron pipe tagged "L.S. 3202"
- Computed corner location only.

PARCEL MAP FOR
LOUIS J. ALBARES AND JAMES R. SMITH
PORTION OF SECTIONS 14, 23, & 24, T.26N., R.10E., M.D.B. & M.
PLUMAS COUNTY, CALIFORNIA

SCALE: 1" = 200'

PAUL E. SIMPSON, & ASSOCIATES, ENGINEERS & SURVEYORS
SUSANVILLE, CALIFORNIA