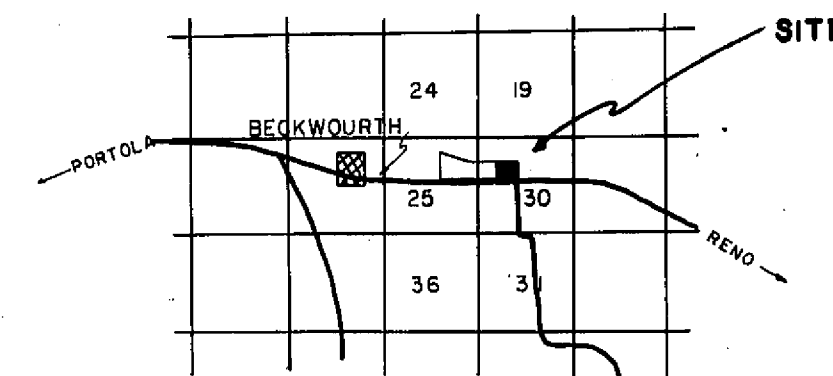


- Found 3/4" I.P., LS 3297
- Found State Hwy. Monument
- ◇ Section Corner
- Set Iron Pin With Brass Cap
- () Record Data

Basis Of Bearing Is Taken From The California
Division Of Highways Record Map As Shown As
S. 89° 36' E. On Highway 70.

LOCATION MAP

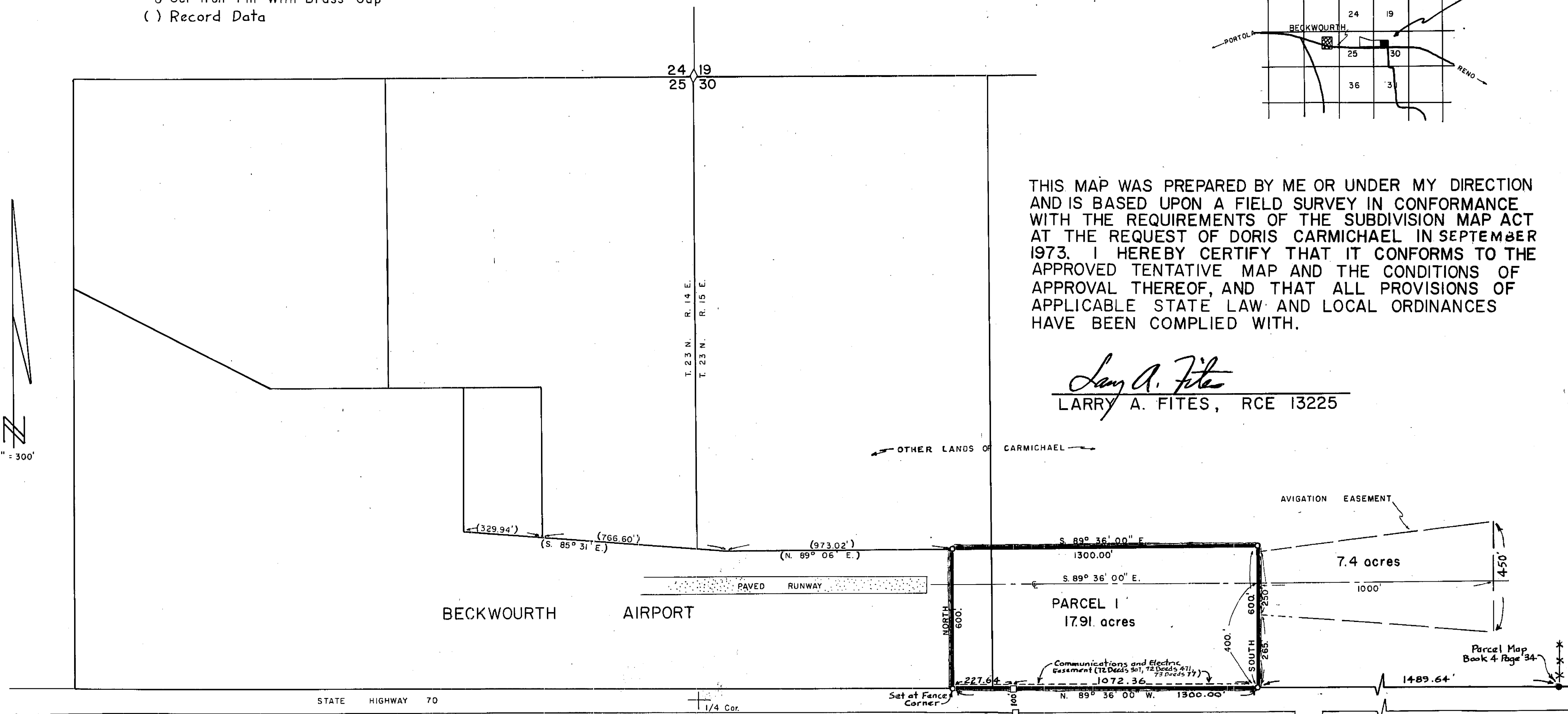
1" = 2 miles



THIS MAP WAS PREPARED BY ME OR UNDER MY DIRECTION
AND IS BASED UPON A FIELD SURVEY IN CONFORMANCE
WITH THE REQUIREMENTS OF THE SUBDIVISION MAP ACT
AT THE REQUEST OF DORIS CARMICHAEL IN SEPTEMBER
1973. I HEREBY CERTIFY THAT IT CONFORMS TO THE
APPROVED TENTATIVE MAP AND THE CONDITIONS OF
APPROVAL THEREOF, AND THAT ALL PROVISIONS OF
APPLICABLE STATE LAW AND LOCAL ORDINANCES
HAVE BEEN COMPLIED WITH.

Larry A. Fites
LARRY A. FITES, RCE 13225

1" = 300'



NOTES:

PARCEL 1 WAS APPROVED BY THE PLANNING
COMMISSION ON SEPTEMBER 12, 1973 FOR
THE EXTENSION OF BECKWOURTH AIRPORT.

THE SUBDIVISION ORDINANCE REQUIREMENT
FOR THE POSTING OF A BOND TO GUARANTEE
PAYMENT OF TAXES HAS BEEN WAIVED BY
THE PLANNING COMMISSION.

THIS MAP HAS BEEN EXAMINED THIS 5th DAY
OF Oct, 1973 FOR CONFORMANCE WITH THE
REQUIREMENTS OF SECTION 11575 OF THE
SUBDIVISION MAP ACT.

Darrell P. Payne
DARREL P. PAYNE, COUNTY ENGINEER, RCE 8596

FILED FOR RECORD THIS 9th DAY OF October,
1973 AT 3:00 PM IN BOOK 4 OF PARCEL MAPS
AT PAGE 49 AT THE REQUEST OF THE COUNTY ENGINEER.

RECORDING NO. 2302

FEE 5.00

Dorothy Neer Marley
DOROTHY NEER MARLEY, COUNTY RECORDER

PARCEL MAP

A PORTION OF SEC. 30
T.23N. R.15E.
PLUMAS COUNTY, CALIFORNIA
LANDS OF DORIS CARMICHAEL

4PM49