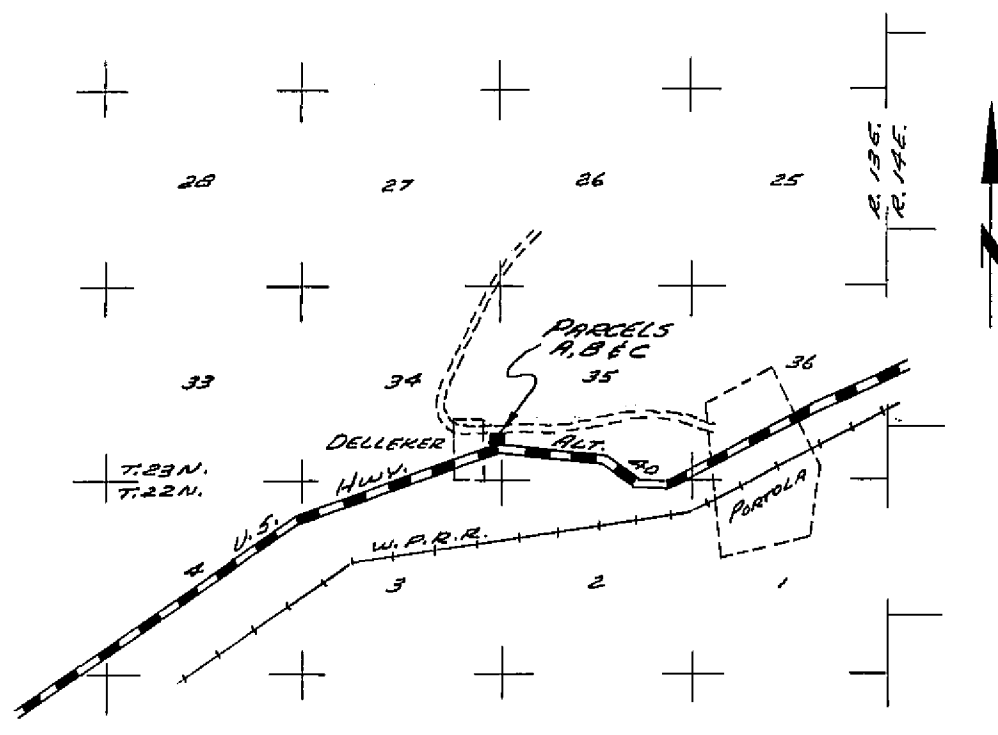
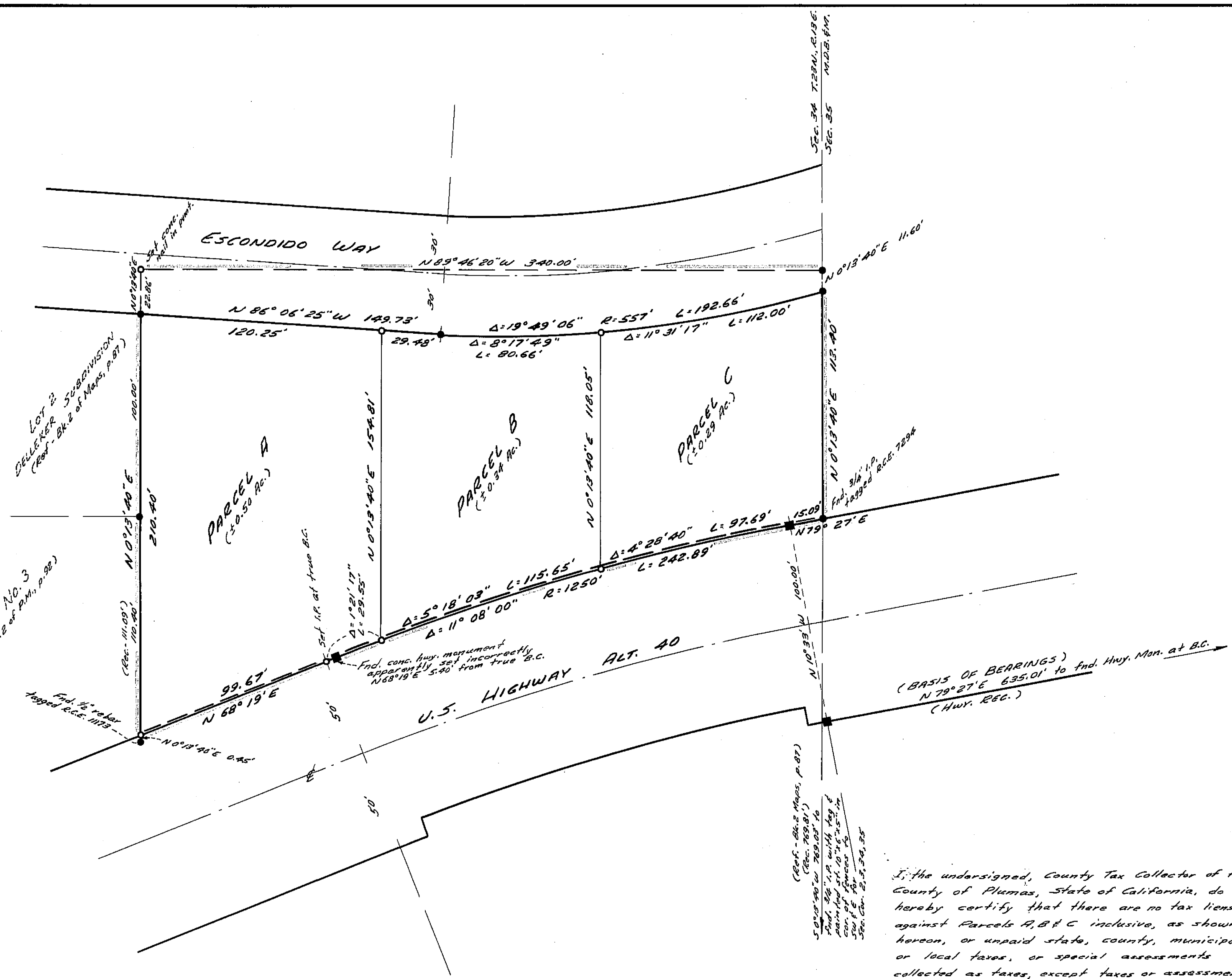


SCALE: 1" = 40'



VICINITY MAP
Scale: 1" = 1 Mile

LEGEND

- Set 3/4" I.P. tagged L.S. 3208 except as noted.
- Fnd. 3/4" I.P. without tag except as noted.
- Fnd. concrete highway monument.
- == Indicates restricted vehicular access to U.S. Hwy. Alt. 40

Note:
Water & sewer service to be supplied to these parcels from local public systems.

(Ref. - Blk. 2 Maps, p. 87)
50' x 100' L. (Sec. 28, 29, 30, 31, 32, 33, 34, 35, 36, 37, 38, 39, 40, 41, 42, 43, 44, 45, 46, 47, 48, 49, 50, 51, 52, 53, 54, 55, 56, 57, 58, 59, 60, 61, 62, 63, 64, 65, 66, 67, 68, 69, 70, 71, 72, 73, 74, 75, 76, 77, 78, 79, 80, 81, 82, 83, 84, 85, 86, 87, 88, 89, 90, 91, 92, 93, 94, 95, 96, 97, 98, 99, 100)

I, the undersigned, County Tax Collector of the County of Plumas, State of California, do hereby certify that there are no tax liens against Parcels A, B & C inclusive, as shown hereon, or unpaid state, county, municipal, or local taxes, or special assessments collected as taxes, except taxes or assessments not yet payable. Taxes or assessments which are a lien but not yet payable are estimated to be in the amount of NONE

Douglas S. Redstreak
Douglas S. Redstreak, Plumas County Tax Collector

CERTIFICATES:

This map was prepared by me or under my direction, and was compiled from a field survey in conformance with the requirements of the Subdivision Map Act at the request of John Sypher in Sept. 1973. I hereby certify that it conforms to the approved tentative map and the conditions of approval thereof; that all provisions of applicable laws and local ordinances have been

This map has been examined this 12th day of December, 1973 for conformance with the requirements of Section 11575 of the Subdivision Map Act.

Filed for record this 12th day of December, 1973 at 3:35 P.M. in Book 1 of Parcel Maps at Page 56 at the request of Paul E. Simpson.
Fee: \$ 5.00 File No. 3402

PARCEL MAP FOR
JOHN SYPHER

PORTION OF THE S.E. 1/4, SEC. 34, T.29N., R.18E., M.D.B. & M. PLUMAS COUNTY, CALIFORNIA

SCALE: 1" = 40'

Paul E. Simpson
Paul E. Simpson, Licensed Land Surveyor, No. 3202

Darrell P. Payne
Darrell P. Payne, R.C.E. 8526, Plumas County Surveyor

Dorothy Near Marley by Carol Ann Brown, Deputy
Dorothy Near Marley, Plumas County Recorder
PAUL E. SIMPSON, & ASSOCIATES, ENGINEERS & SURVEYORS
L.S. 3202, 45 S. ROOP ST., SUSANVILLE, CALIF.