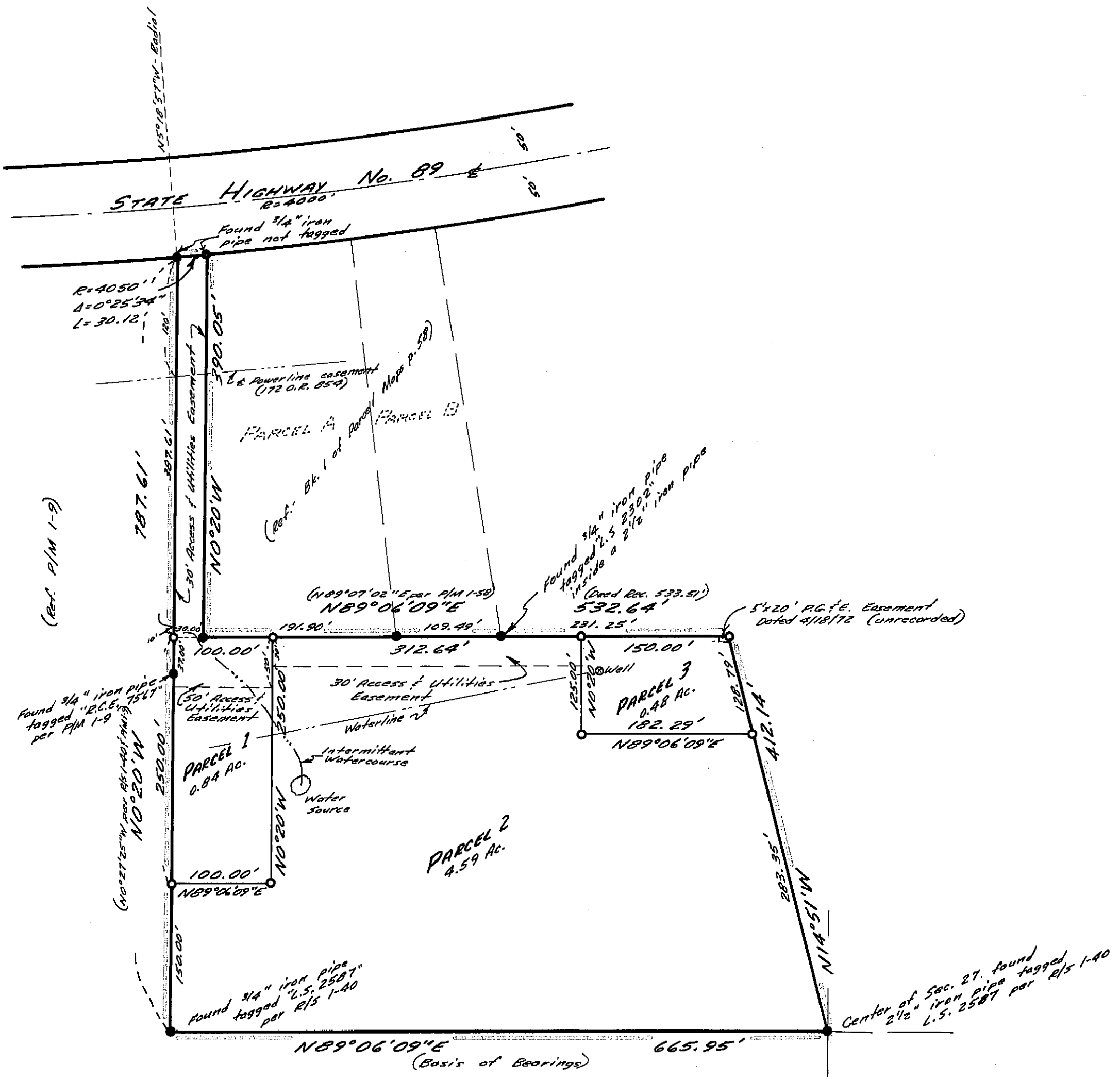


VICINITY MAP  
Scale: 1" = 1 M. 1/4



SCALE: 1" = 100'

Basis of Bearings is the Record of Survey filed in Book 1 of Record of Surveys at page 40.

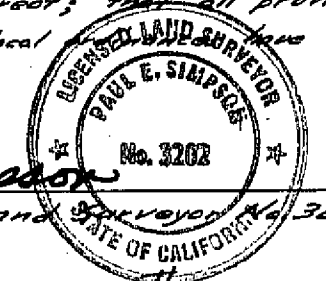


LEGEND

- Found 1" iron pipe tagged "L.S. 2302" per P/M 1-58 (except as noted)
- Set 1/2" iron pipe tagged "L.S. 3202"

CERTIFICATES:

This map was prepared by me or under my direction, and was compiled from a field survey in conformance with the requirements of the Subdivision Map Act at the request of Thomas and Esther Retallack in Nov. 1973. I hereby certify that it conforms to the approved tentative map and the conditions of approval thereof; that all provisions of applicable state laws and local ordinances have been complied with.



Paul E. Simpson  
Paul E. Simpson, Licensed Land Surveyor No. 3202

This map has been examined this 8<sup>th</sup> day of Jan, 1973 for conformance with the requirements of Section 11575 of the Subdivision Map Act.

Darrell P. Payne  
Darrell P. Payne, Plumas County Surveyor, P.C.G. 8596

Filed for record this 8<sup>th</sup> day of January, 1973 at 2:50 P.M. in Book 4 of Parcel Maps at page 61 at the request of Paul E. Simpson.  
Fee: 5.00 File No. 3701

Dorothy Near Marley  
Dorothy Near Marley, Plumas County Recorder

I, the undersigned County Tax Collector of the County of Plumas, State of California, do hereby certify that there are no tax liens against parcels 1, 2, or 3, as shown hereon, or unpaid state, county, municipal or local taxes or special assessments collected as taxes, except taxes or assessments not yet payable. Taxes or assessments which are a lien but not yet payable, are estimated to be in the amount of NONE.

Douglas S. Redstrake  
Douglas S. Redstrake, Plumas County Tax Collector

PARCEL MAP FOR  
**THOMAS AND ESTHER RETALLACK**  
PORTION OF THE S.E. 1/4, NW 1/4, SEC. 27, T.27N, R. 8E, M.D.B. 1st M.  
PLUMAS COUNTY, CALIFORNIA

SCALE: 1" = 100'

PAUL E. SIMPSON, & ASSOCIATES, ENGINEERS & SURVEYORS  
SUSANVILLE, CALIFORNIA

4 PM 61