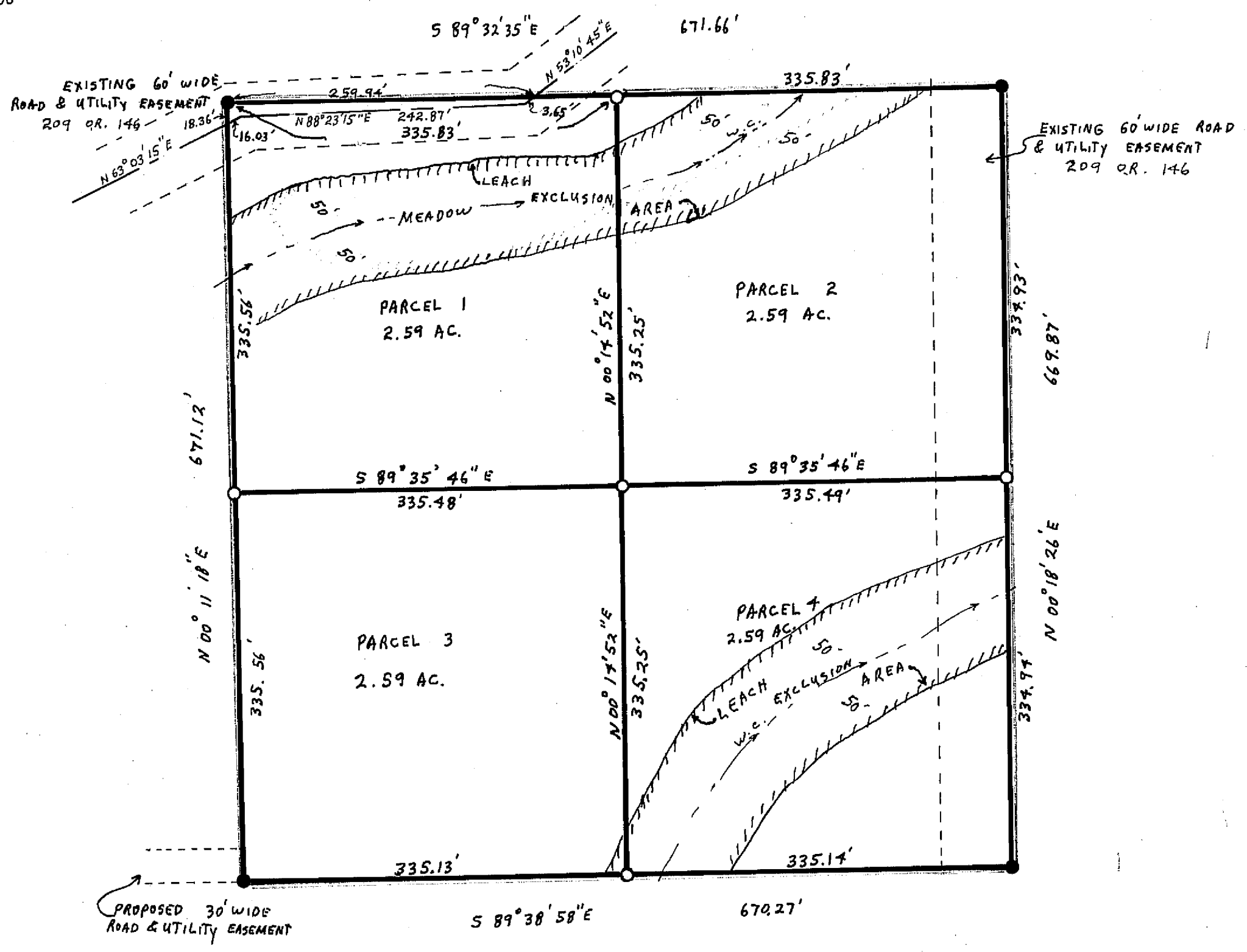
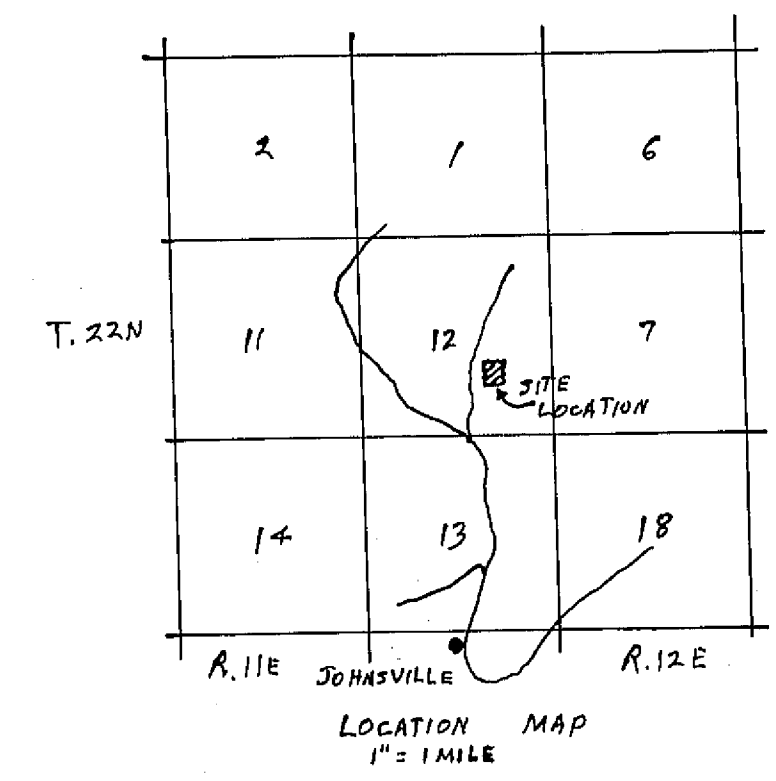


TAX COLLECTOR'S CERTIFICATE

I, THE UNDERSIGNED COUNTY TAX COLLECTOR OF THE COUNTY OF PLUMAS, STATE OF CALIFORNIA, DO HEREBY CERTIFY THAT THERE ARE NO TAX LIENS AGAINST PARCELS 1 THROUGH 4 INCLUSIVE AS SHOWN HEREON, OR UNPAID STATE, COUNTY, MUNICIPAL, OR LOCAL TAXES, OR SPECIAL ASSESSMENTS COLLECTED AS TAXES EXCEPT TAXES OR ASSESSMENTS NOT YET PAYABLE. TAXES OR ASSESSMENTS WHICH ARE A LIEN BUT NOT YET PAYABLE ARE ESTIMATED TO BE IN THE AMOUNT OF NONE

Douglas S. Redstrake
DOUGLAS S. REDSTRAKE
PLUMAS COUNTY TAX COLLECTOR



SURVEYOR'S CERTIFICATE

THIS MAP WAS PREPARED BY ME OR UNDER MY DIRECTION AND IS BASED UPON A FIELD SURVEY IN CONFORMANCE WITH THE REQUIREMENTS OF THE SUBDIVISION MAP ACT AT THE REQUEST OF A. E. EBERLE IN JUNE 1972. I HEREBY CERTIFY THAT IT CONFORMS TO THE APPROVED TENTATIVE MAP AND THE CONDITIONS OF APPROVAL THEREOF, AND THAT ALL PROVISIONS OF APPLICABLE STATE LAW AND LOCAL ORDINANCES HAVE BEEN COMPLIED WITH.

Gerald C. Henderson
GERALD C. HENDERSON LS 3297

COUNTY SURVEYOR'S CERTIFICATE

THIS MAP HAS BEEN EXAMINED THIS 16th DAY OF Jan, 1972, FOR CONFORMANCE WITH THE REQUIREMENTS OF SECTION 11575 OF THE SUBDIVISION MAP ACT.

Darrell P. Payne
DARRELL P. PAYNE RQE 8596

COUNTY RECORDER'S CERTIFICATE

FILED THIS 30th DAY OF Jan, 1972 AT 11:00 A.M. IN BOOK 4 OF PARCEL MAPS AT PAGE 64. AT THE REQUEST OF GERALD C. HENDERSON.

FEE \$ 5.00

RECORDING NO. 3992

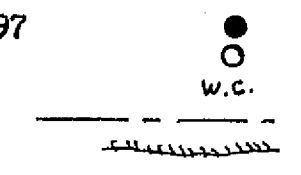
Dorothy Ann Mackay
COUNTY RECORDER

NOTE

BASIS OF BEARING IS TAKEN FROM THAT CERTAIN MAP FILED IN BOOK 3 OF PARCEL MAPS AT PAGE 88 PLUMAS COUNTY RECORDS.

LEGEND

- FOUND 3/4" IP TAGGED LS 3297
- SET 1/2" IP TAGGED LS 3297
- WATERCOURSE
- CENTERLINE ROAD EASEMENT
- LEACH SETBACK LINE



PARCEL MAP

OF A SUBDIVISION INTO FOUR PARTS FOR

A. E. EBERLE FOR JUNE 1972

PORTION OF SECTION 12, T. 22N., R. 11E., M. D. M.

PARCEL 4 IN BOOK 3 OF PARCEL MAPS AT PAGE 88

PLUMAS COUNTY, CALIFORNIA

GERALD C. HENDERSON
LICENSED LAND SURVEYOR
P. O. BOX 13
PORTOLA, CALIFORNIA

2/24/72