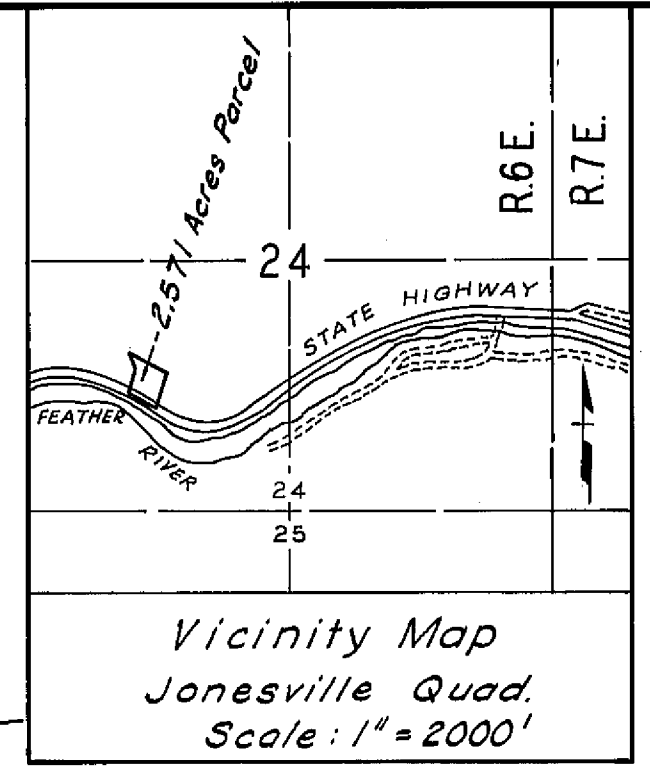


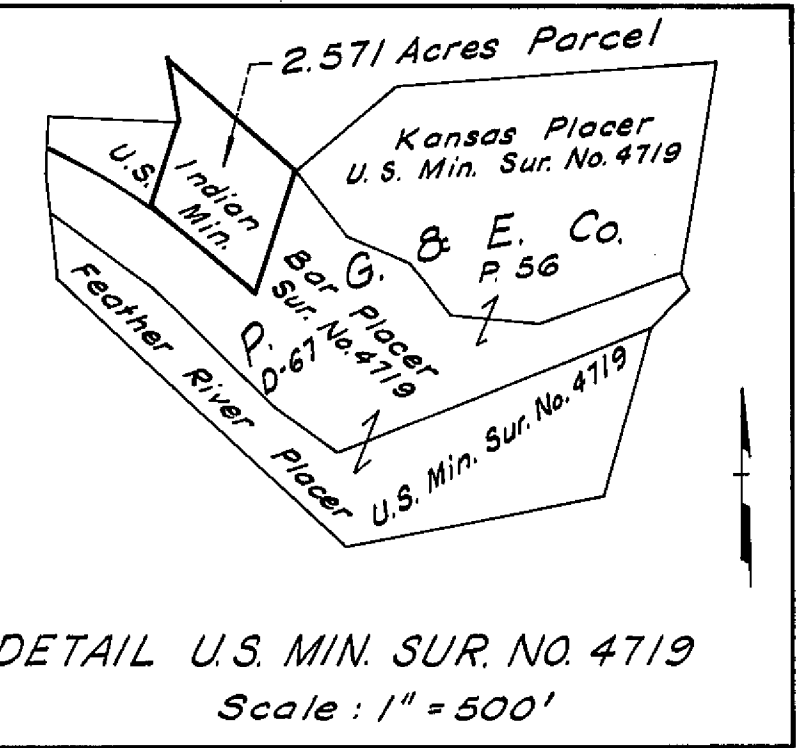
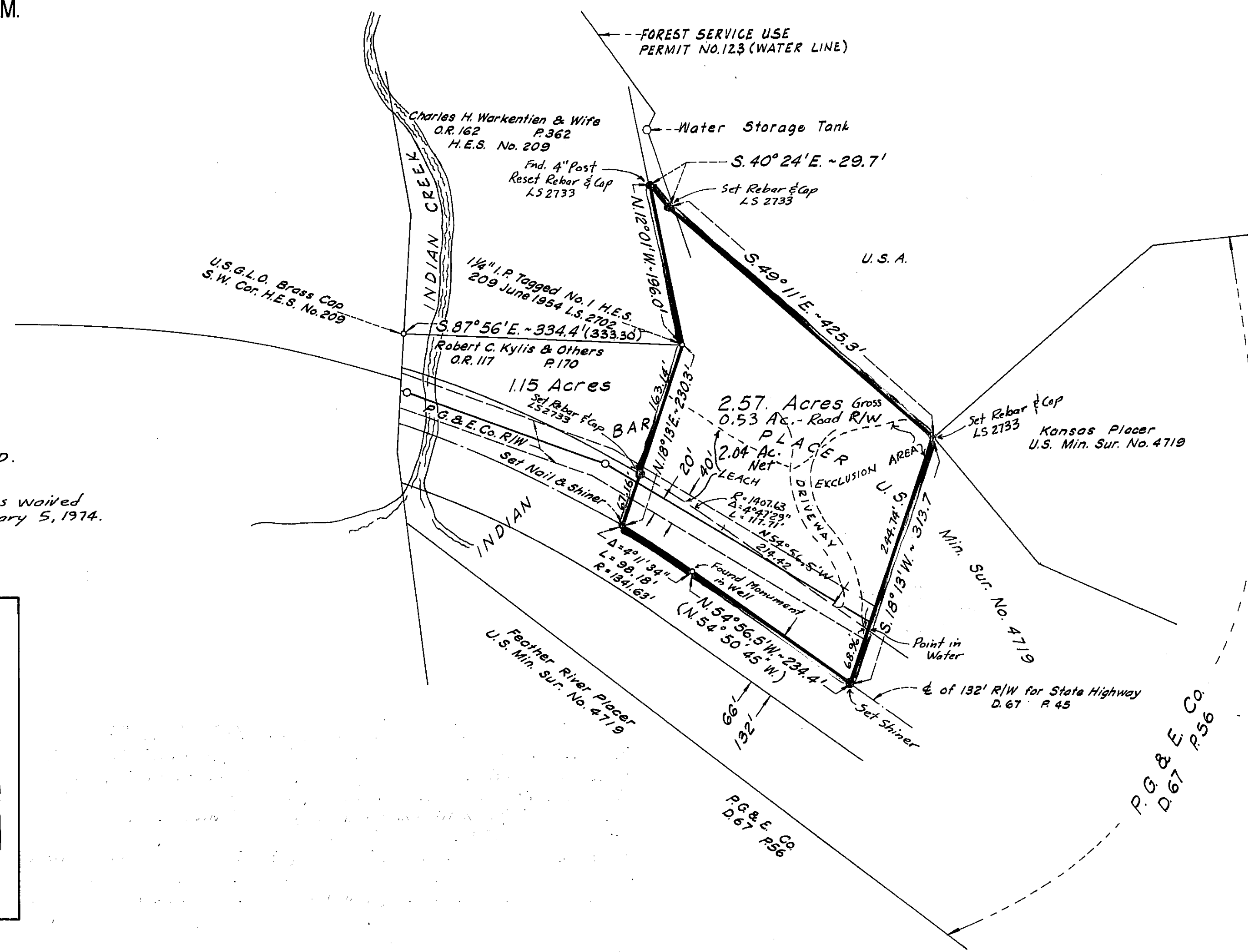
T.25N. R.6E. M. D. B. & M.
(S.W. 1/4 SEC. 24)



LEGEND
BASIS OF BEARING IS N. 18° 13' E.
AS SHOWN ON SET BY BOUNDARY
OF 1.15 AC. PARCEL.

- INDICATES MONUMENTS SET
- INDICATES MONUMENTS FOUND
- ITEMS IN PARENTHESES ARE RECORD.

The requirement of a tax bond was waived by the Board of Supervisors, February 5, 1974.



Scale: 1" = 100'

PARCEL MAP

OF A PARCEL OF LAND LOCATED IN THE SW 1/4 SECTION 24 T25N R6E M.D.B.&M. AND BEING A PORTION OF THE INDIAN BAR P.M.C. MINERAL SURVEY NO. 4719 COUNTY OF PLUMAS STATE OF CALIFORNIA

SURVEYOR'S CERTIFICATE
THIS MAP WAS PREPARED UNDER MY DIRECTION AND WAS COMPILED FROM RECORD DATA IN CONFORMANCE WITH THE REQUIREMENTS OF THE SUBDIVISION MAP ACT AT THE REQUEST OF PACIFIC GAS AND ELECTRIC COMPANY IN APRIL 1973. I HEREBY CERTIFY THAT ALL PROVISIONS OF APPLICABLE STATE LAW AND LOCAL ORDINANCES HAVE BEEN COMPLIED WITH.

Alvin C. Pond
ALVIN C. POND L.S. 2733

COUNTY ENGINEER'S CERTIFICATE
THIS MAP HAS BEEN EXAMINED THIS 5TH DAY OF Feb, 1974 FOR CONFORMANCE WITH THE REQUIREMENTS OF SECTION 11575 OF THE SUBDIVISION MAP ACT.

Darrell P. Payne
COUNTY ENGINEER
COUNTY OF PLUMAS, CALIFORNIA

RECORDER'S CERTIFICATE
FILE NO. 4617 FEES PAID. FILED THIS 6TH DAY OF Feb, 1974 AT 10:55 AM, IN BOOK 4 OF Placer AT PAGE 66 AT THE REQUEST OF PACIFIC GAS AND ELECTRIC COMPANY.

Carol Andrew Thomas
DEPUTY RECORDER
COUNTY OF PLUMAS

HPM 66