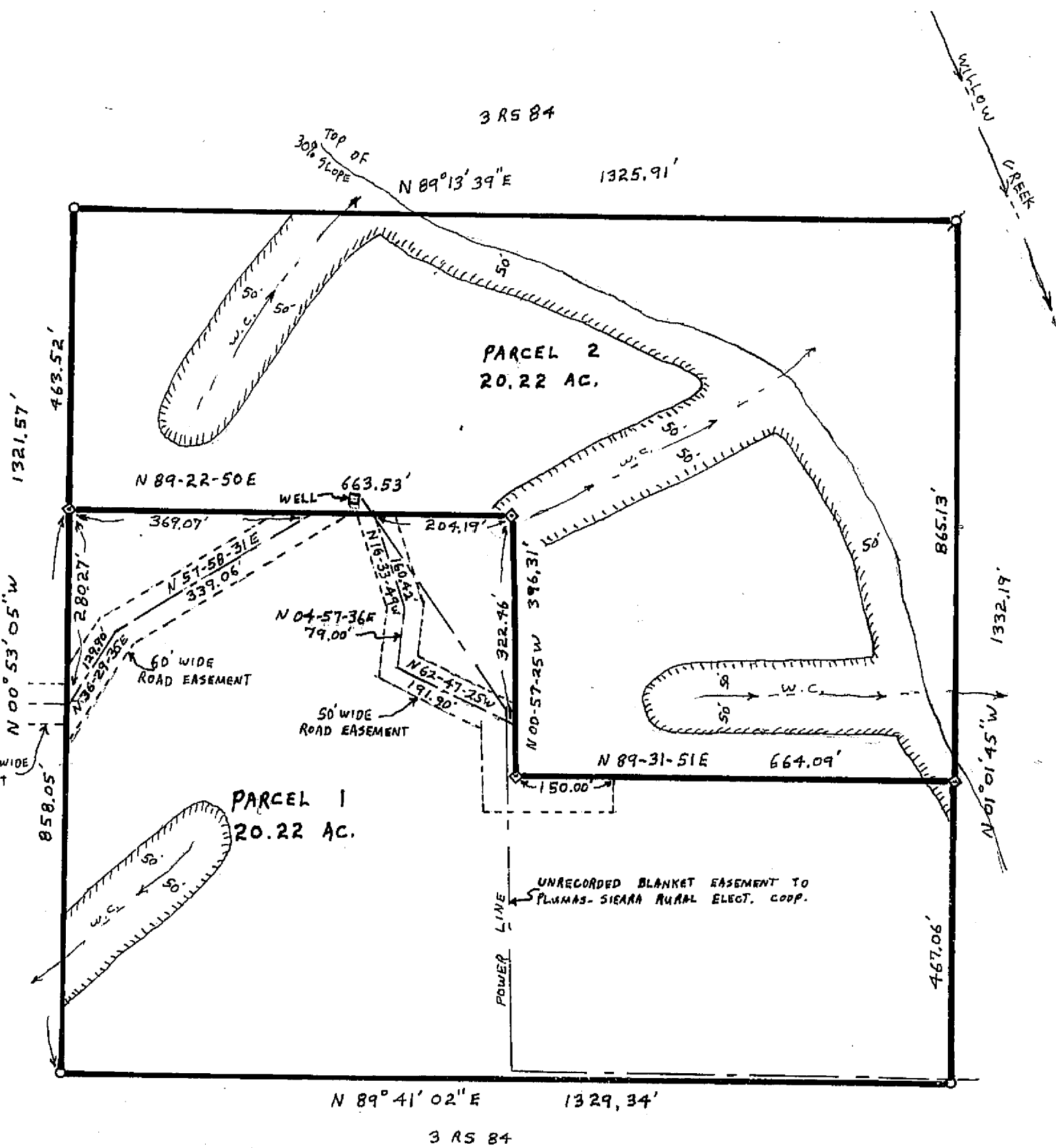


SCALE 1" = 200'

EXISTING 60' WIDE ROAD EASEMENT 171 OR. 1122



NOTE

BASIS OF BEARING IS TAKEN FROM THAT CERTAIN MAP FILED IN BOOK 3 OF RECORD OF SURVEYS AT PAGE 84, PLUMAS COUNTY RECORDS.

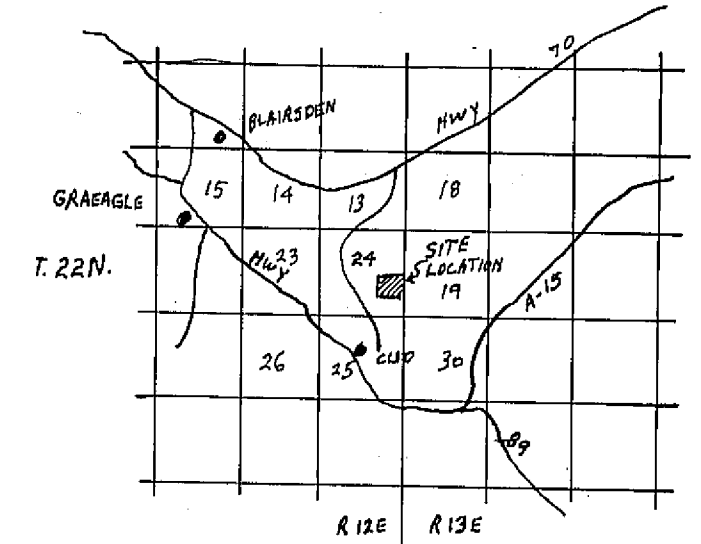
LEGEND

- END 3/4" IP TAGGED LS 2846
- RECORD CORNER (NOT FOUND)
- SET 3/4" IP TAGGED LS 3297
- WATERCOURSE
- LEACH SETBACK LINE

TAX COLLECTOR'S CERTIFICATE

I, THE UNDERSIGNED COUNTY TAX COLLECTOR OF THE COUNTY OF PLUMAS, STATE OF CALIFORNIA, DO HEREBY CERTIFY THAT THERE ARE NO TAX LIENS AGAINST PARCELS 1 AND 2 INCLUSIVE AS SHOWN HEREON, OR UNPAID STATE, COUNTY, MUNICIPAL, OR LOCAL TAXES, OR SPECIAL ASSESSMENTS COLLECTED AS TAXES EXCEPT TAXES OR ASSESSMENTS NOT YET PAYABLE. TAXES OR ASSESSMENTS WHICH ARE A LIEN BUT NOT YET PAYABLE ARE ESTIMATED TO BE IN THE AMOUNT OF NONE

Douglas S. Reedstake
DOUGLAS S. REEDSTAKE



LOCATION MAP
1" = 2 1/2 MILES

SURVEYOR'S CERTIFICATE

THIS MAP WAS PREPARED BY ME OR UNDER MY DIRECTION AND IS BASED UPON A FIELD SURVEY IN CONFORMANCE WITH THE REQUIREMENTS OF THE SUBDIVISION MAP ACT AT THE REQUEST OF G. STURDEVANT AND R. BRADFIELD IN OCTOBER 1972. I HEREBY CERTIFY THAT IT CONFORMS TO THE APPROVED TENTATIVE MAP AND THE CONDITIONS OF APPROVAL THEREOF, AND THAT ALL PROVISIONS OF APPLICABLE STATE LAW AND LOCAL ORDINANCES HAVE BEEN COMPLIED WITH.

Gerald C. Henderson
GERALD C. HENDERSON LS 3297

COUNTY SURVEYOR'S CERTIFICATE

THIS MAP HAS BEEN EXAMINED FOR CONFORMANCE WITH THE REQUIREMENTS OF SECTION 11575 OF THE SUBDIVISION MAP ACT THIS 16th DAY OF Feb 1973.

Darrell P. Payne
DARRELL P. PAYNE RCE 8596

COUNTY RECORDER'S CERTIFICATE

FILED THIS 14th DAY OF February 1973 AT 4:45 P.M. IN BOOK 4 OF PARCEL MAPS AT PAGE 68 AT THE REQUEST OF GERALD C. HENDERSON.

FEE 500
RECORDING NO. 4206

Dorothy New Marley
COUNTY RECORDER

PARCEL MAP

OF A SUBDIVISION INTO TWO PARTS
FOR

G. STURDEVANT AND R. BRADFIELD OCTOBER 1972

NE 1/4 OF SE 1/4 OF SECTION 24, T. 22N., R. 12E., M. D. M.

PLUMAS COUNTY, CALIF.

GERALD C. HENDERSON
LICENSED LAND SURVEYOR
P. O. BOX 13
PORTOLA, CALIFORNIA