

TAX COLLECTOR'S CERTIFICATE

I, THE UNDERSIGNED COUNTY TAX COLLECTOR OF THE COUNTY OF PLUMAS, STATE OF CALIFORNIA, DO HEREBY CERTIFY THAT THERE ARE NO TAX LIENS AGAINST PARCELS 1 THROUGH 4, INCLUSIVE AS SHOWN HEREON, OR UNPAID STATE, COUNTY, MUNICIPAL, OR LOCAL TAXES, OR SPECIAL ASSESSMENTS COLLECTED AS TAXES EXCEPT TAXES OR ASSESSMENTS NOT YET PAYABLE. TAXES OR ASSESSMENTS WHICH ARE A LIEN BUT NOT YET PAYABLE ARE ESTIMATED TO BE IN THE AMOUNT OF NONE

Douglas S. Redstrom
DOUGLAS S. REDSTROME
PLUMAS COUNTY TAX COLLECTOR

SURVEYOR'S CERTIFICATE

THIS MAP WAS PREPARED BY ME OR UNDER MY DIRECTION AND IS BASED UPON A FIELD SURVEY IN CONFORMANCE WITH THE REQUIREMENTS OF THE SUBDIVISION MAP ACT AT THE REQUEST OF D. HOLT IN JUNE 1972. I HEREBY CERTIFY THAT IT CONFORMS TO THE APPROVED TENTATIVE MAP AND THE CONDITIONS OF APPROVAL THEREOF, AND THAT ALL PROVISIONS OF APPLICABLE STATE LAW AND LOCAL ORDINANCES HAVE BEEN COMPLIED WITH.

Gerald C. Henderson
GERALD C. HENDERSON LS 3297

COUNTY SURVEYOR'S CERTIFICATE

THIS MAP HAS BEEN EXAMINED FOR CONFORMANCE WITH THE REQUIREMENTS OF SECTION 11575 OF THE SUBDIVISION MAP ACT THIS 26th DAY OF Feb 1972

Darrell P. Payne
DARRELL P. PAYNE RCE 8506

COUNTY RECORDER'S CERTIFICATE

FILED THIS 28th DAY OF February, 1972 AT 2:40 P.M. IN BOOK 4 OF PARCEL MAPS AT PAGE 77. AT THE REQUEST OF GERALD C. HENDERSON.

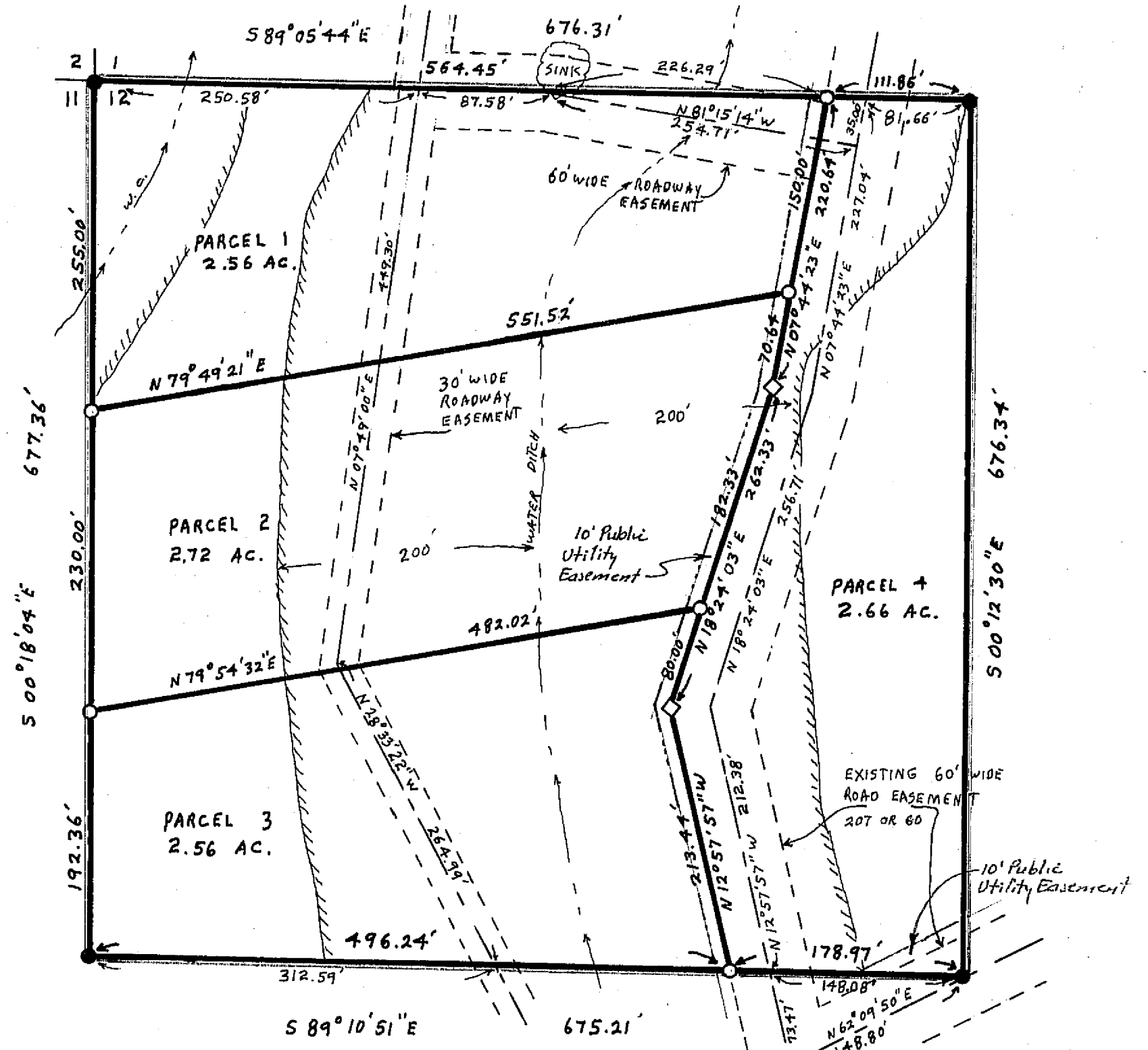
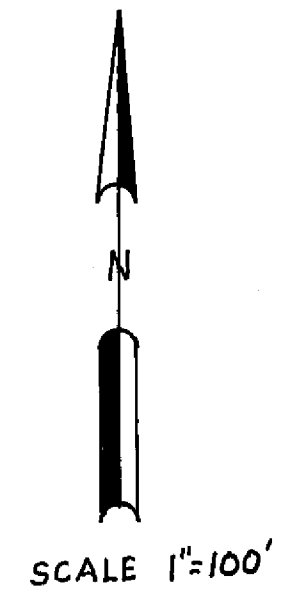
FEE 5.00
RECORDING NO. 4341

Dorothy Ann Marley
COUNTY RECORDER

PARCEL MAP

OF A SUBDIVISION INTO FOUR PARTS
FOR
D. HOLT JUNE 1972
PORTION OF SECTION 12, T. 22N., R. 11E., MDM.
PARCEL 1 IN BOOK 3 OF PARCEL MAPS AT PAGE 93
PLUMAS COUNTY, CALIF.

GERALD C. HENDERSON
LICENSED LAND SURVEYOR
P. O. BOX 13
PORTOLA, CALIFORNIA

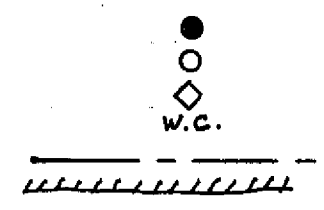


NOTES

BASIS OF HEARING IS TAKEN FROM THAT CERTAIN MAP FILED IN BOOK 3 OF PARCEL MAPS AT PAGE 93 PLUMAS COUNTY RECORDS.

LEGEND

- FOUND 1" IP TAGGED LS 3297
- 5/2" 1" IP TAGGED LS 3297
- COMPUTED CORNER LOCATION
- WATERCOURSE
- CENTERLINE ROAD EASEMENT
- LEACH SETBACK LINE



4/19/72