

BASIS OF BEARING

THE BASIS OF BEARING OF THIS MAP IS THE SOUTH LINE OF THE S.W. 1/4 OF THE S.E. 1/4 OF SEC. 35, T. 26 N., R. 10 E., M.D.B. & M. AS RECORDED AT BOOK 2 OF RECORDS OF SURVEY ON PAGE 94, AS S 87° 52' 08" W

LEGEND

- Fd. POINT AS NOTED
- SET 3/4" I.P. TAGGED R.C.E. 11128
- 2 R/524 REFERS TO BOOK 2 OF RECORDS OF SURVEY AT PAGE 94, PLUMAS COUNTY, CALIFORNIA.

SURVEYOR'S CERTIFICATE

THIS MAP WAS PREPARED BY ME OR UNDER MY DIRECTION AND WAS COMPILED FROM RECORD DATA AND IS BASED UPON A FIELD SURVEY IN CONFORMANCE WITH THE REQUIREMENTS OF THE SUBDIVISION MAP ACT AT THE REQUEST OF CARL YOUNG DURING SEPTEMBER 1973. I HEREBY CERTIFY THAT IT CONFORMS WITH THE APPROVED TENTATIVE MAP AND THE CONDITIONS OF APPROVAL THEREOF, THAT PROVISIONS OF APPLICABLE STATE LAW AND LOCAL ORDINANCES HAVE BEEN COMPLIED WITH.

Eugene A. Ringel
EUGENE A. RINGEL, R.C.E. 11128

COUNTY SURVEYOR'S CERTIFICATE

THIS MAP HAS BEEN EXAMINED THIS 6th DAY OF June 1974 FOR CONFORMANCE WITH THE REQUIREMENTS OF SECTION 11575 OF THE SUBDIVISION MAP ACT.

Larry A. Fites
LARRY A. FITES, R.C.E. 13225
PLUMAS COUNTY SURVEYOR

RECORDER'S CERTIFICATE

FILED THIS 6th DAY OF June, 1974 AT 3:30 P.M. IN BOOK 4 OF PARCEL MAPS AT PAGE 87 AT THE REQUEST OF County Congress

SERIAL NO 5757
FEE 5.00
Dorothy Neer Marley
DOROTHY NEER MARLEY
PLUMAS COUNTY RECORDER

TAX COLLECTOR'S CERTIFICATE

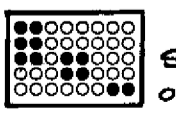
I THE UNDERSIGNED, TAX COLLECTOR OF THE COUNTY OF PLUMAS, STATE OF CALIFORNIA, DO HEREBY CERTIFY THAT THERE ARE NO TAX LIENS AGAINST PARCELS 1, 2, 3 OR 4 AS SHOWN HEREON OR UNPAID STATE, COUNTY, MUNICIPAL OR LOCAL TAXES OR SPECIAL ASSESSMENTS NOT YET PAYABLE. TAXES OR ASSESSMENTS WHICH ARE A LIEN BUT NOT YET PAYABLE ARE ESTIMATED TO BE IN THE AMOUNT OF \$ 115.00

Douglas S. Redstreak
DOUGLAS S. REDSTREAK
PLUMAS COUNTY TAX COLLECTOR

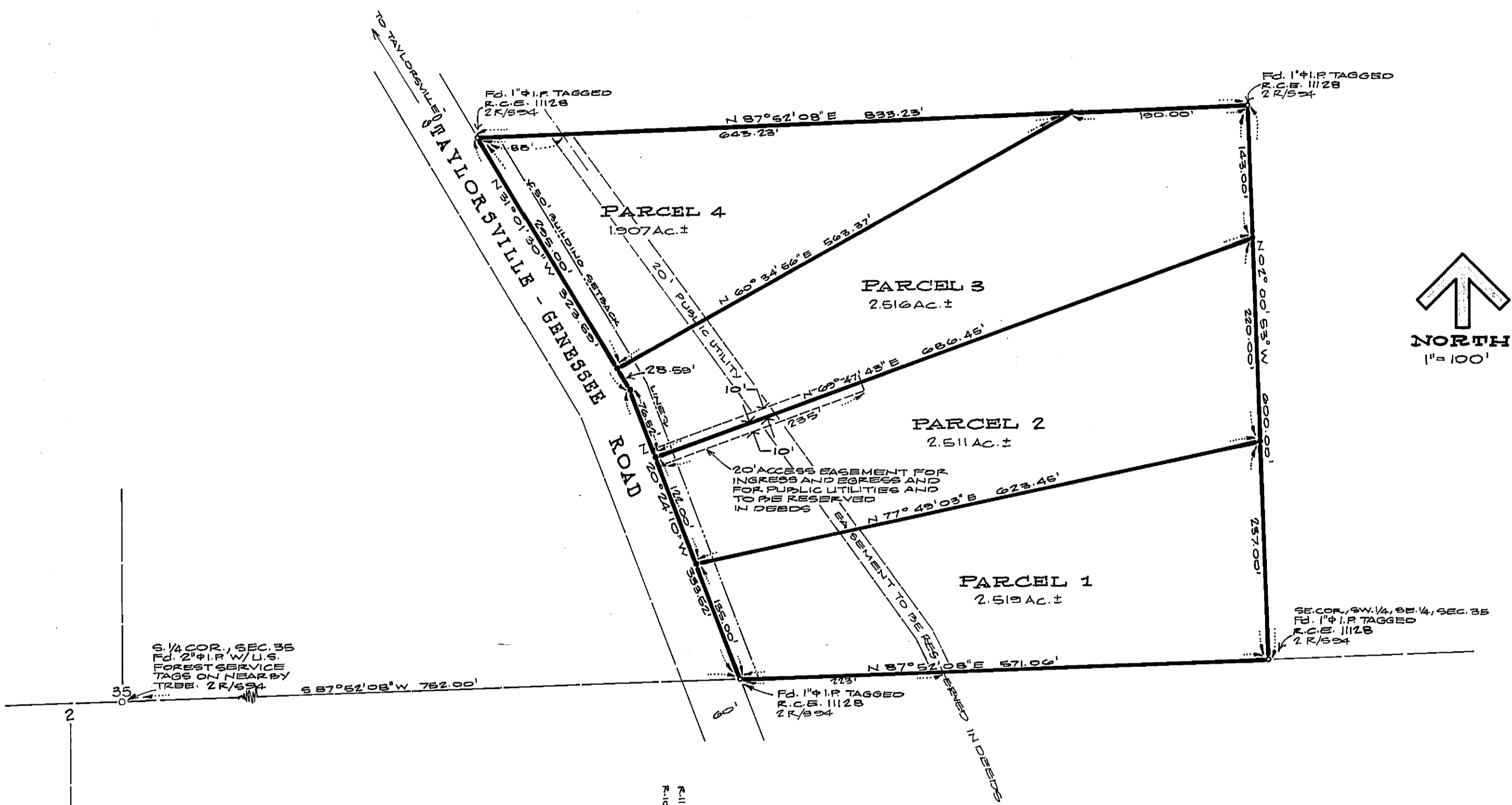
RINGEL AND ASSOCIATES INC.
ENGINEERS
CHICO



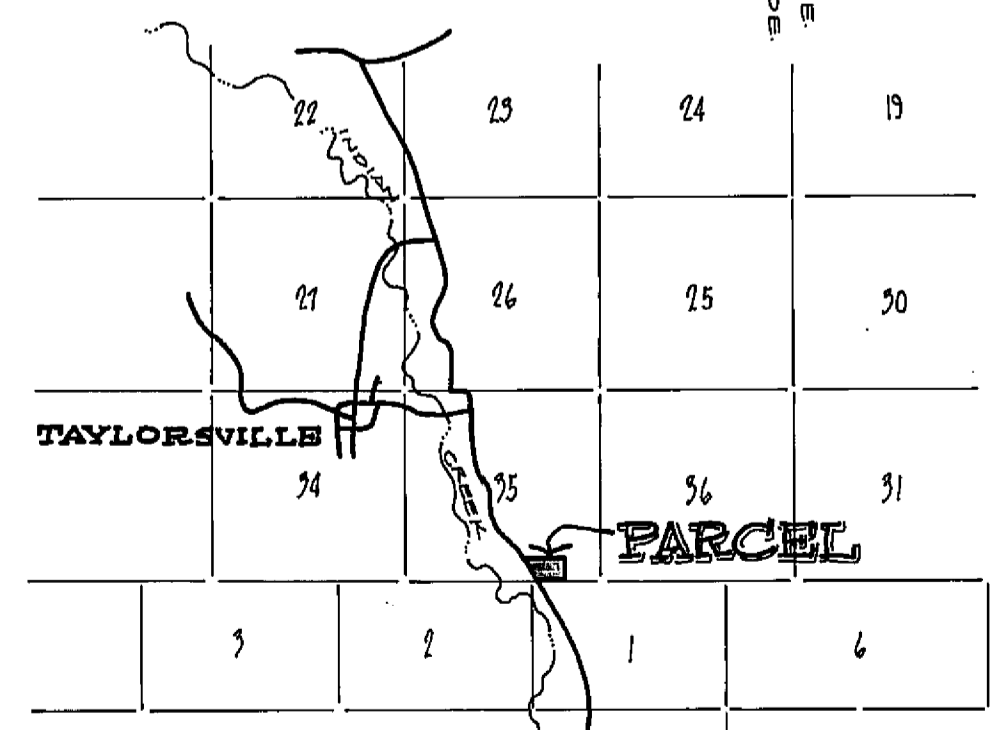
SURVEYORS
CALIFORNIA



SHEET No 1
OF 1 SHEETS



S 1/4 COR., SEC. 35
Fd. 2" I.P. W/L.S.
FOREST SERVICE
TAGS ON NEARBY
TREE. 2 R/524



LOCATION MAP
1" = 1 MILE