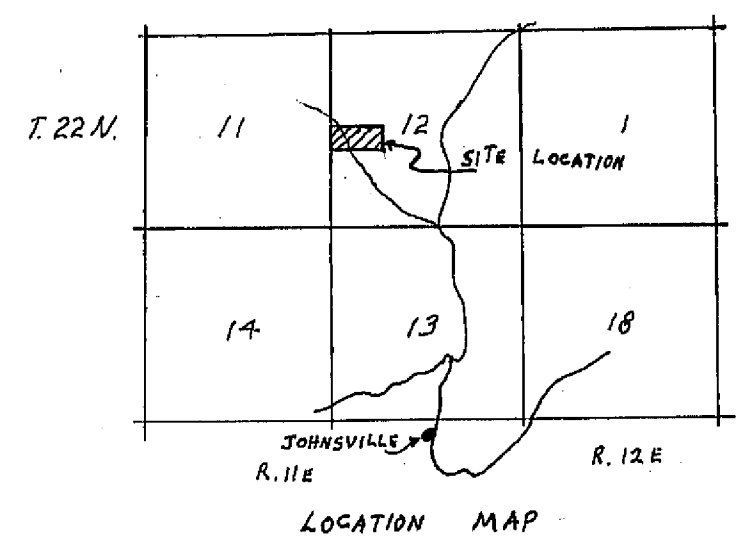


TAX COLLECTOR'S CERTIFICATE

I, THE UNDERSIGNED COUNTY TAX COLLECTOR OF THE COUNTY OF PLUMAS, STATE OF CALIFORNIA, DO HEREBY CERTIFY THAT THERE ARE NO TAX LIENS AGAINST PARCELS 1 THROUGH 4 INCLUSIVE AS SHOWN HEREON, OR UNPAID STATE, COUNTY, MUNICIPAL, OR LOCAL TAXES, OR SPECIAL ASSESSMENTS COLLECTED AS TAXES EXCEPT TAXES OR ASSESSMENTS NOT YET PAYABLE. TAXES OR ASSESSMENTS WHICH ARE A LIEN BUT NOT YET PAYABLE ARE ESTIMATED TO BE IN THE AMOUNT OF \$205.00

Douglas S. Redstreak
DOUGLAS S. REDSTREAK
PLUMAS COUNTY TAX COLLECTOR



SURVEYOR'S CERTIFICATE

THIS MAP WAS PREPARED BY ME OR UNDER MY DIRECTION AND IS BASED UPON A FIELD SURVEY IN CONFORMANCE WITH THE REQUIREMENTS OF THE SUBDIVISION MAP ACT AT THE REQUEST OF R. MILTON IN APRIL 1972. I HEREBY CERTIFY THAT IT CONFORMS TO THE APPROVED TENTATIVE MAP AND THE CONDITIONS OF APPROVAL THEREOF, AND THAT ALL PROVISIONS OF APPLICABLE STATE LAW AND LOCAL ORDINANCES HAVE BEEN COMPLIED WITH.

Gerald C. Henderson
GERALD C. HENDERSON LS 3297

COUNTY SURVEYOR'S CERTIFICATE

THIS MAP HAS BEEN EXAMINED FOR CONFORMANCE WITH THE REQUIREMENTS OF SECTION 11575 OF THE SUBDIVISION MAP ACT THIS 5th DAY OF August 1974.

Larry A. Fites
LARRY A. FITES RCE 13225

COUNTY RECORDER'S CERTIFICATE

FILED THIS 5th DAY OF August 1974 AT 4:40 P.M., IN BOOK 4 OF PARCEL MAPS AT PAGE 94, AT THE REQUEST OF GERALD C. HENDERSON.

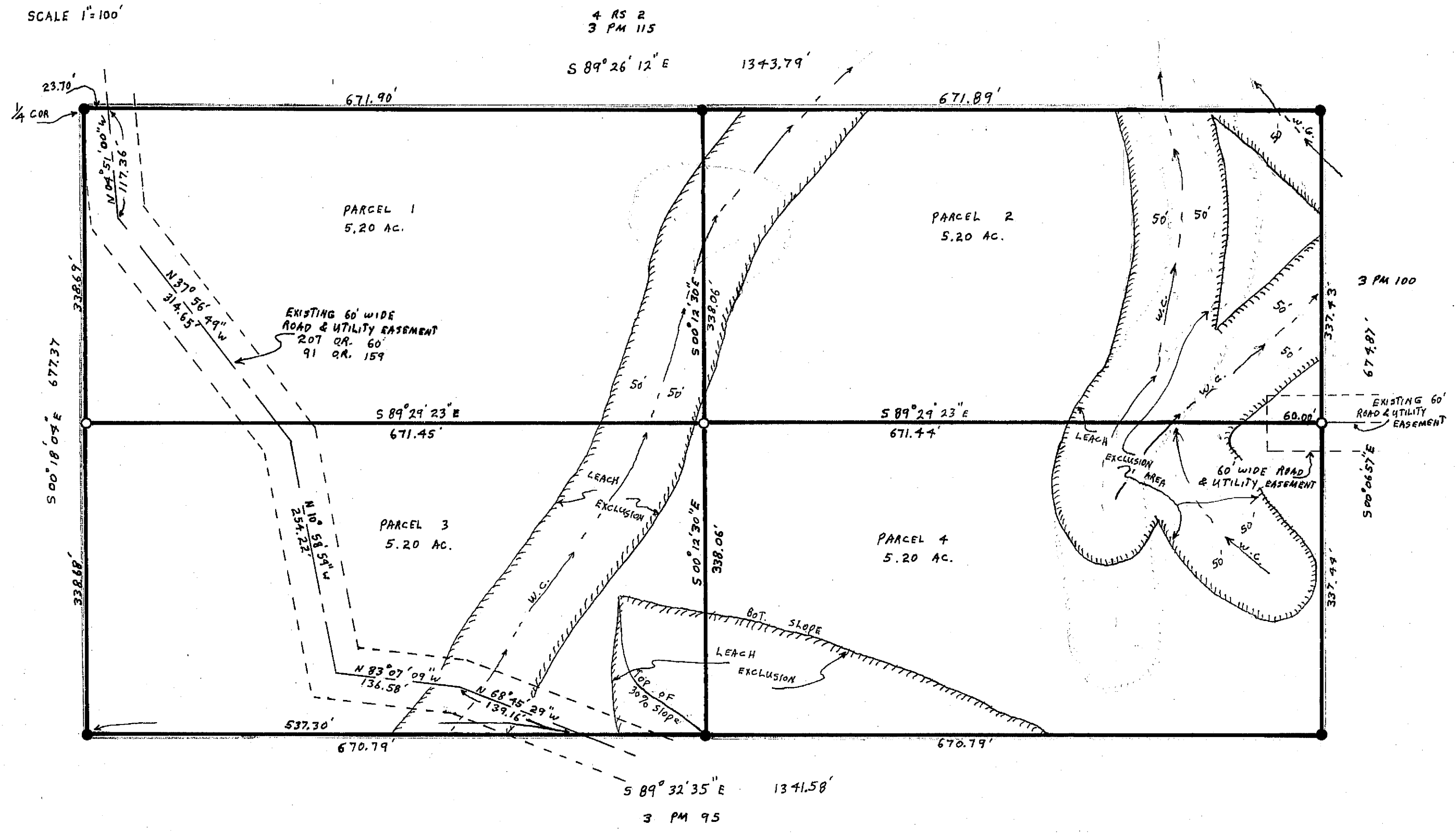
FEES 5.00
RECORDING NO. 685

Dorothy New Marley
COUNTY RECORDER

PARCEL MAP

OF A SUBDIVISION INTO FOUR PARTS
FOR
R. MILTON
APRIL 1972
PORTION OF SECTION 12, T. 22N., R. 11E., M. D. B. & M.
PARCEL 1 IN BOOK 3 OF PARCEL MAPS AT PAGE 95
PLUMAS COUNTY, CALIF.

GERALD C. HENDERSON
LICENSED LAND SURVEYOR
P. O. BOX 13
PORTOLA, CALIFORNIA



NOTE
BASIS OF BEARING IS TAKEN FROM THAT CERTAIN MAP FILED IN BOOK 3 OF PARCEL MAPS AT PAGE 95 PLUMAS COUNTY RECORDS.

LEGEND
FOUND 3/4" IP TAGGED LS 3297
SET 3/4" IP TAGGED LS 3297
WATERCOURSE
CENTERLINE ROAD EASEMENT
LEACH SETBACK LINE

