

This map was prepared by me or under my direction, and was compiled from a field survey in conformance with the requirements of the Subdivision Map Act at the request of The Western Pacific Railroad Co. in May, 1974. I hereby certify that it conforms to the approved tentative map and the conditions of approval thereof; that all provisions of applicable state laws and local ordinances have been complied with.

**Paul E. Simpson**  
 Paul E. Simpson, Licensed Land Surveyor No. 3202  
 STATE OF CALIFORNIA



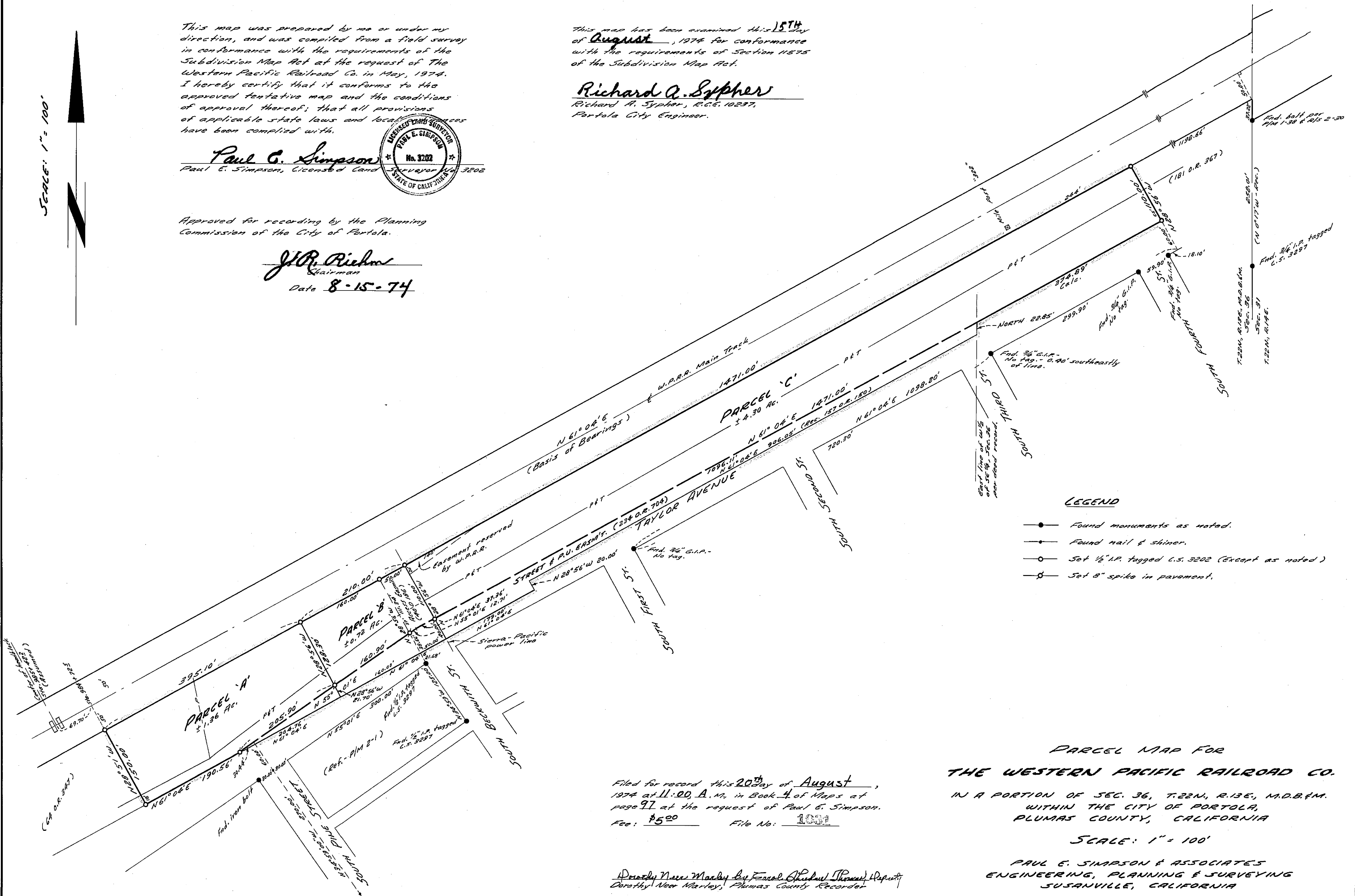
Approved for recording by the Planning Commission of the City of Portola.

**J.R. Richman**  
 Chairman  
 Date 8-15-74

This map has been examined this 15<sup>th</sup> day of August, 1974 for conformance with the requirements of Section 11575 of the Subdivision Map Act.

**Richard A. Sypher**  
 Richard A. Sypher, R.C.E. 10237,  
 Portola City Engineer.

SCALE: 1" = 100'



**LEGEND**

- Found monuments as noted.
- Found nail & shiner.
- Set 1/2" I.P. tagged C.S. 3202 (Except as noted)
- Set 8" spike in pavement.

**PARCEL MAP FOR THE WESTERN PACIFIC RAILROAD CO.**

IN A PORTION OF SEC. 36, T.22N., R.13E., M.D.B.&M. WITHIN THE CITY OF PORTOLA, PLUMAS COUNTY, CALIFORNIA

SCALE: 1" = 100'

PAUL E. SIMPSON & ASSOCIATES  
 ENGINEERING, PLANNING & SURVEYING  
 SUSANVILLE, CALIFORNIA

Filed for record this 20<sup>th</sup> day of August, 1974 at 11:20 A.M. in Book 4 of Maps at page 97 at the request of Paul E. Simpson.  
 Fee: \$5.00 File No: 1001

Dorothy New Mackay by Fernald (Shirley) (Shirley) Deputy  
 Dorothy New Mackay, Plumas County Recorder