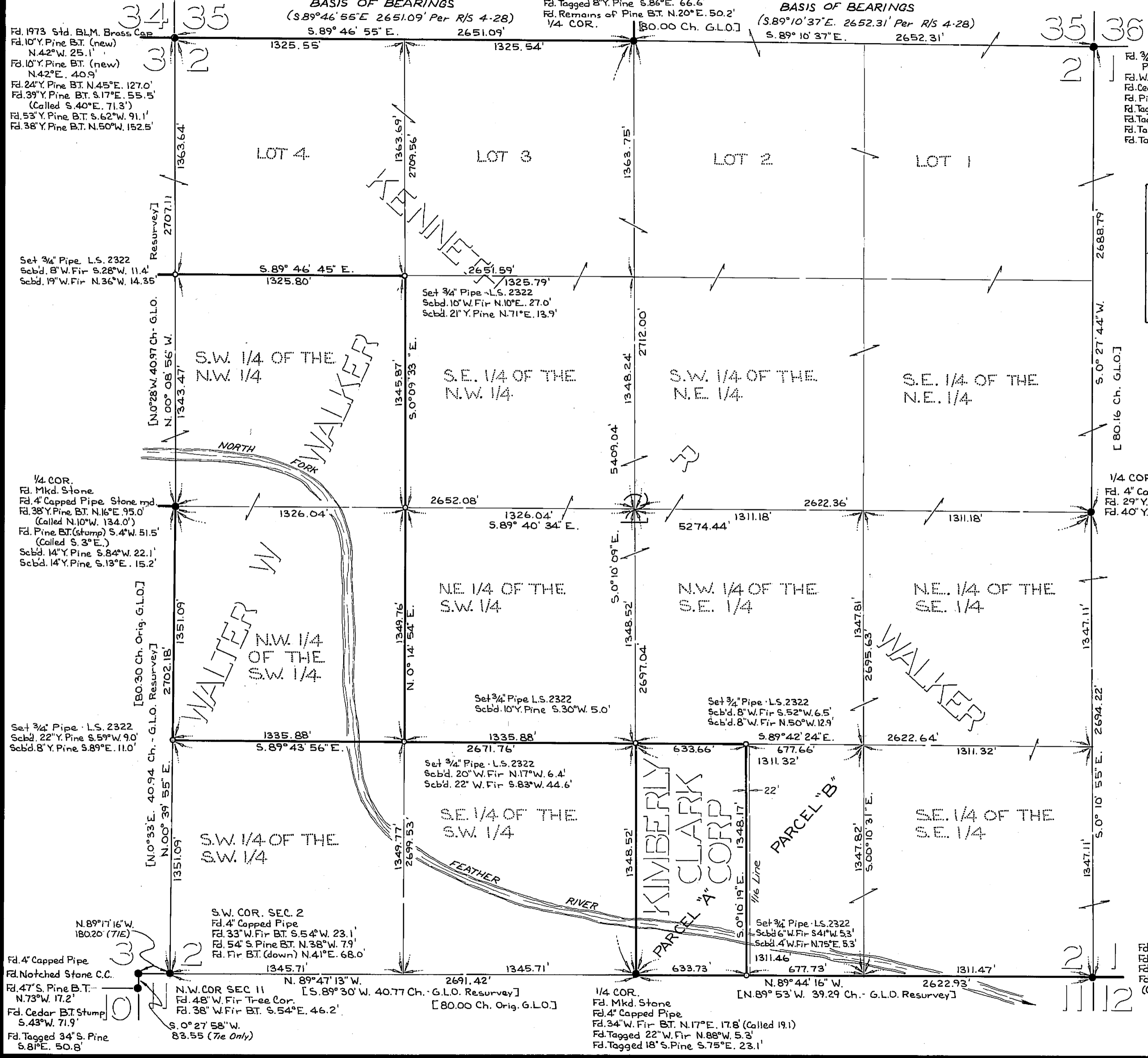


Fd. 3/4" Pipe Capped by Collins Pines per R/S 4-28  
 Fd. Remains of Pine B.T. S.60°E. 39.6'  
 Fd. Tagged 23" Y. Pine S.87°W. 14.4'  
 Fd. Tagged 27" W. Fir N.19°W. 58.7'  
 Fd. Tagged 8" Y. Pine S.86°E. 66.6'  
 Fd. Remains of Pine B.T. N.20°E. 50.2'  
 1/4 COR. [80.00 Ch. G.L.O.]

**BASIS OF BEARINGS**  
 (S.89°46'55"E. 2651.09' Per R/S 4-28)  
 S.89°46'55"E. 2651.09'  
**BASIS OF BEARINGS**  
 (S.89°10'37"E. 2652.31' Per R/S 4-28)  
 S.89°10'37"E. 2652.31'



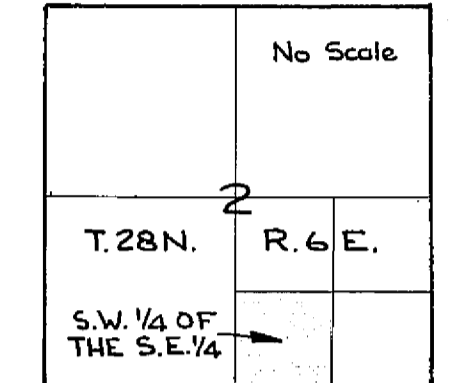
Fd. 3/4" Pipe Capped by Collins Pine Per R/S 4-28  
 Fd. W. Fir B.T. (Snag) N.67°W. 55.4'  
 Fd. Cedar B.T. (Snag) N.64°E. 74.6'  
 Fd. Pine B.T. (Stump) S.15°E. 40.9'  
 Fd. Tagged 17" W. Fir S.48°E. 9.9'  
 Fd. Tagged 12" W. Fir S.31°E. 5.4'  
 Fd. Tagged 16" W. Fir S.78°W. 34.8'  
 Fd. Tagged 21" W. Fir N.30°E. 19.8'

**SURVEYOR'S CERTIFICATE**  
 THIS MAP WAS PREPARED BY ME OR UNDER MY DIRECTION AND IS BASED UPON A FIELD SURVEY, IN CONFORMANCE WITH THE REQUIREMENTS OF THE SUBDIVISION MAP ACT AT THE REQUEST OF W.M. BEATY IN JUNE 1974. I HEREBY CERTIFY THAT IT CONFORMS TO THE APPROVED TENTATIVE MAP AND THE CONDITIONS OF APPROVAL THEREOF, AND THAT ALL PROVISIONS OF APPLICABLE STATE LAW AND LOCAL ORDINANCES HAVE BEEN COMPLIED WITH.

LOREN J. SARGENT *Loren J. Sargent* L.S. 2322

**COUNTY SURVEYOR'S CERTIFICATE**  
 THIS MAP HAS BEEN EXAMINED THIS 3<sup>rd</sup> DAY OF Sept. 1974 FOR CONFORMANCE WITH SECTION 11575 OF THE SUBDIVISION MAP ACT.

LARRY A. FITES *Larry A. Fites* PLUMAS COUNTY SURVEYOR R.C.E. 13225



LOCATION MAP

**RECORDER'S CERTIFICATE**  
 FILED THIS 3<sup>rd</sup> DAY OF Sept. 1974 AT 10:15 P.M. IN BOOK 4 OF Parcel Maps AT PAGE 101 AT THE REQUEST OF *County Engineers*  
 FEE: \$5.00 *Dorothy Neer Marley*  
 DOROTHY NEER MARLEY - PLUMAS COUNTY RECORDER

**LEGEND**

SCALE: 1" = 400'  
 BASIS OF BEARINGS  
 4 R.S. 28

- INDICATES: FOUND CORNER AS NOTED
- INDICATES: SET COR. AS NOTED

**ACREAGE KEY**

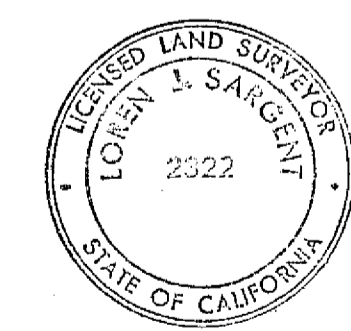
KENNETH R. WALKER ET AL - 471.39 ACRES  
 WALTER W. WALKER ET AL - 82.19 ACRES  
 KIMBERLY CLARK CORP. - 19.61 ACRES

**TAX COLLECTOR'S CERTIFICATE**

I, THE UNDERSIGNED, TAX COLLECTOR OF THE COUNTY OF PLUMAS, STATE OF CALIFORNIA DO HEREBY CERTIFY THAT THERE ARE NO TAX LIENS AGAINST PARCELS "A" AND "B" AS SHOWN HEREON OR UNPAID STATE, COUNTY OR LOCAL TAXES OR SPECIAL ASSESSMENTS NOT YET PAYABLE. TAXES OR ASSESSMENTS WHICH ARE A LIEN BUT NOT YET PAYABLE ARE ESTIMATED TO BE IN THE AMOUNT OF \$ 25.00

DOUGLAS A. READSTREAK *Douglas A. Readstreak* TAX COLLECTOR

**PARCEL MAP** for  
**HARRIET HENDERSON ET AL**  
 IN SECTION 2 T.28N. R.6E.  
 M.D.M. in the unincorporated territory  
 of PLUMAS COUNTY, CALIFORNIA.



June 1974 Scale: 1" = 400'  
 Loren J. Sargent L.S. 2322