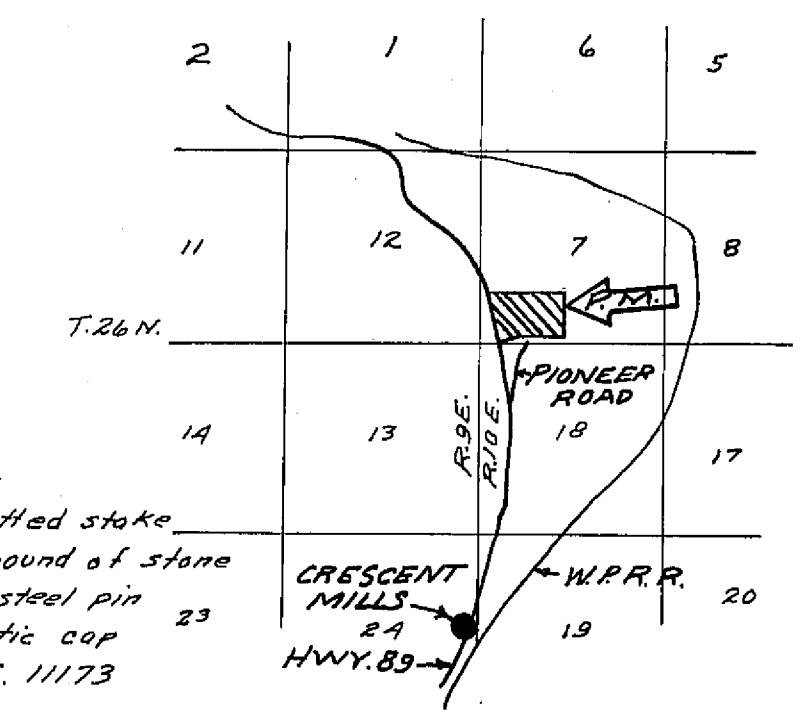
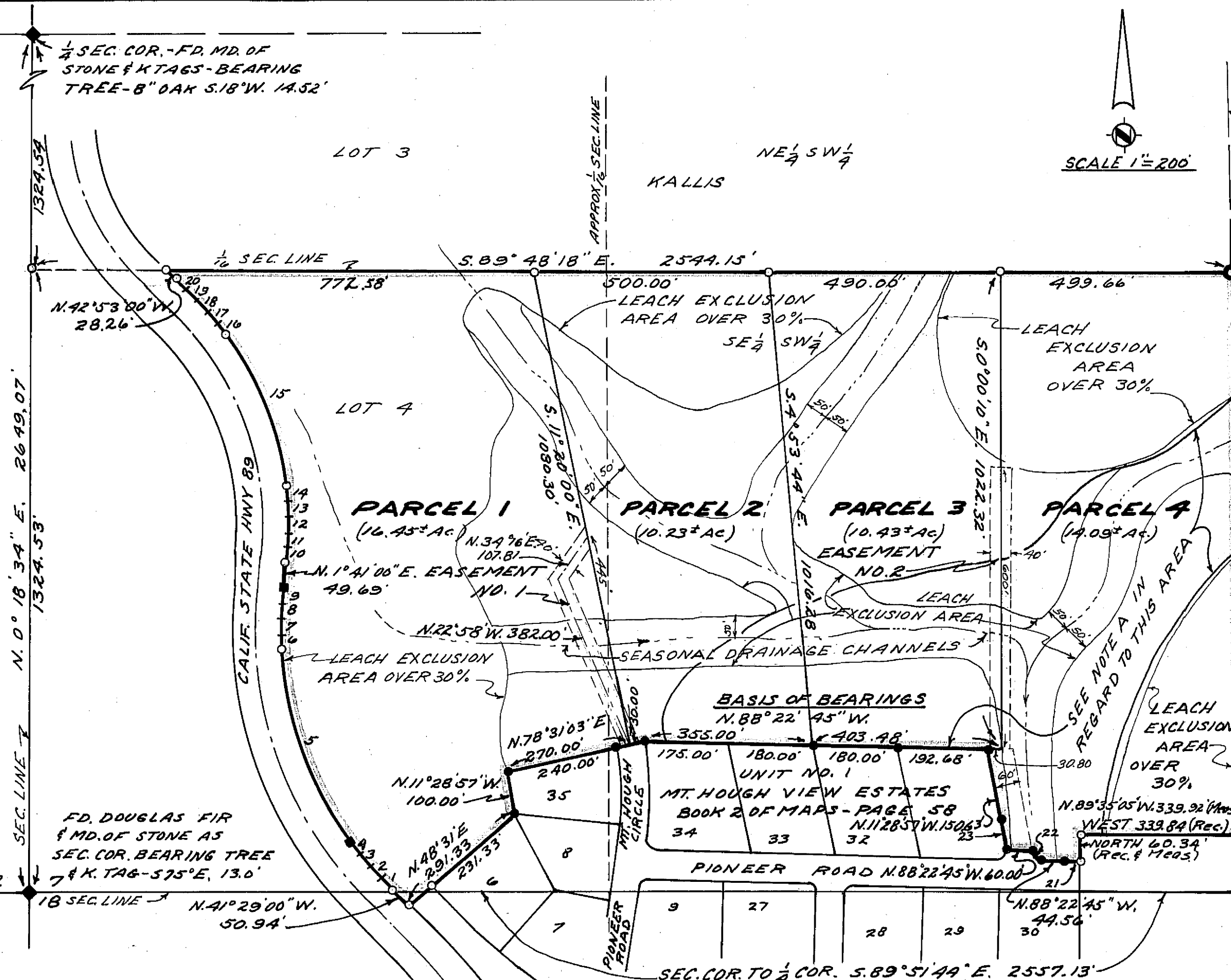


CURVE DATA

NO.	Δ	R	T	L	C	BEARING
1	0°30'00"	3910.70	17.06	34.13	34.13	N.41°14'00"W.
2	1°00'00"	1905.35	16.63	33.25	33.25	N.40°29'00"W.
3	1°30'00"	1236.90	16.19	32.38	32.38	N.39°14'00"W.
4	2°00'00"	902.68	15.76	31.51	31.51	N.37°29'00"W.
5	33°10'00"	759.44	226.16	433.62	433.62	N.19°54'00"W.
6	2°00'00"	902.35	15.76	31.51	31.51	N.2°19'00"W.
7	1°30'00"	1236.90	16.19	32.38	32.38	N.0°34'00"W.
8	1°00'00"	1905.35	16.63	33.25	33.25	N.0°41'00"E.
9	0°30'00"	3910.70	17.06	34.13	34.13	N.1°26'00"E.
10	0°30'00"	3537.75	15.44	30.87	30.87	N.1°26'00"E.
11	1°00'00"	1818.87	15.87	31.74	31.74	N.0°41'00"E.
12	1°30'00"	1245.92	16.31	32.62	32.62	N.0°34'00"W.
13	2°00'00"	953.44	16.75	33.49	33.49	N.2°19'00"W.
14	2°30'00"	787.55	17.18	34.36	34.36	N.4°54'00"W.
15	29°34'00"	672.96	177.59	342.27	343.43	N.20°36'00"W.
16	2°30'00"	787.55	17.18	34.36	34.36	N.36°38'00"W.
17	2°00'00"	953.44	16.75	33.49	33.49	N.38°53'00"W.
18	1°30'00"	1245.92	16.31	32.62	32.62	N.40°38'00"W.
19	1°00'00"	1818.87	15.87	31.74	31.74	N.41°53'00"W.
20	0°30'00"	3537.75	15.44	30.87	30.87	N.42°38'00"W.
21	7°12'02"	292.53	18.41	36.77	36.74	N.88°46'44"W.
22	90°00'00"	20.00	20.00	31.92	28.28	N.43°22'45"W.
23	13°06'12"	300.00	34.45	68.60	68.45	N.4°55'57"W.



LEGEND

- Found 1" I.P. R.C.E. 11128, except as noted
- Found 6" x 6" conc. mon. (Calif. Div. of Hys.)
- + Chord Point on spiral curve (not monumented)
- Set 1/2" Steel Pin with plastic cap stamped "R.C.E. 11173"
- Fd. Found
- I.P. Iron Pipe
- I.P. & T. Iron Pipe and Tag
- Rec. Record (from deed, record map, etc.)
- Meas. Measured
- R.C.E. Registered Civil Engineer
- Ac. Acre

SURVEYOR'S CERTIFICATE

This map was prepared by me or under my direction (and is based upon a field survey) in conformance with the Subdivision Map Act at the request of Gloria R. Grassi, July 17, 1974. I hereby certify that it conforms to the approved tentative map and the conditions of approval thereof; that all provisions of applicable state law and local ordinances have been complied with.

John C. Simpson
John C. Simpson
R.C.E. 11173

COUNTY TAX COLLECTOR'S CERTIFICATE

I, the undersigned, County Tax Collector of the County of Plumas, State of California, do hereby certify that there are no tax liens against Parcels 1, 2, 3, and 4 as shown hereon or unpaid state, county, municipal or local taxes, or spl. assessments collected as taxes, except taxes or assessments not yet payable. Taxes or assessments which are a lien but not yet payable, are estimated to be in the amount of \$415.00.

Douglas S. Redstreake
Douglas S. Redstreake
Plumas County Tax Collector

NOTES

NOTE A
No habitable structures or leach fields permitted in this area unless tests and observations during the wet season indicate the area is not subject to flooding and that the ground water level is at a distance of 5 ft. or more from the ground surface, or acceptable corrective measures are taken to alleviate such conditions.

NOTE B
Tentative Parcel Map approved by Plumas County Planning Commission May 28, 1974

1/16 Sec. Cor. as monument and as occupied and accepted for many years, may or may not be precise 1/16 sec. cor. by sectional subdivision.

SW Cor. and W. 1/4 Cor. of Sec. 7 have been confirmed, accepted, remarketed and witnessed by U.S. Forest Service -- not of record on Plumas County records so far as known. Corner Records will be filed with Plumas County Engineer.

EASEMENT NO. 1 to be established by separate document, recorded concurrently with the filing of this map, as a non-exclusive easement for roadway, drainage, utilities and incidental purposes for the benefit of Parcels 1 and 2.

EASEMENT NO. 2 to be established by separate document, recorded concurrently with the filing of this map, as a non-exclusive easement for roadway, drainage, utilities and incidental purposes for the benefit of Parcels 3 and 4.

RECORDER'S CERTIFICATE

Filed this 2nd day of Sept., 1974, at 1:35 P.M. in Book 2 of Parcel Maps at Page 2 at the request of John G. Simpson.

Dorothy New Marley
Plumas County Recorder

Fee \$5.00
File No. 1763

COUNTY SURVEYOR'S CERTIFICATE

This map has been examined this 3rd day of September, 1974, for conformance with the requirements of Section 11575 of the Subdivision Map Act.

John A. Fite
Plumas County Surveyor



JOHN C. SIMPSON, P.E.
CIVIL ENGINEER
P.O. BOX 719
QUINCY, CALIFORNIA

PARCEL MAP
OF
SUBDIVISION OF FOUR PARCELS
FOR
GLORIA R. GRASSI
RECORD OWNER
WITHIN
SE 1/4 SW 1/4 AND LOT 4, SEC. 7, T.26N, R.10E, M.D.M.
PLUMAS COUNTY, CALIFORNIA