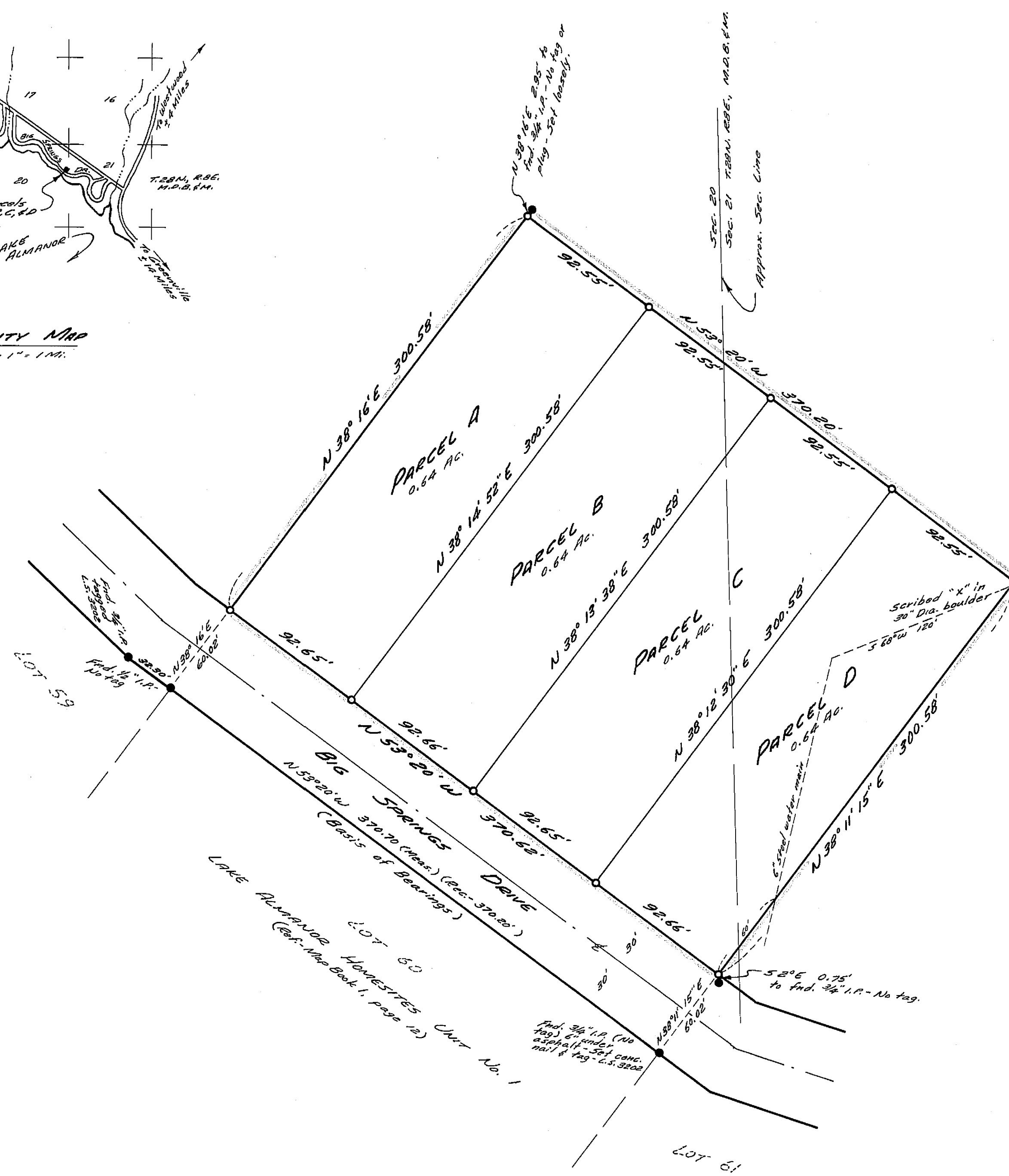
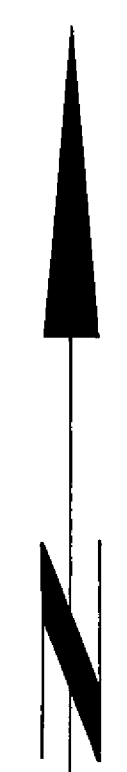


VICINITY MAP
Scale: 1" = 1 MI.



Basis of Bearings
is the record map
of Lake Almanor
Homesteads Unit
No. 1, filed in Map
Book 1 at Page 12.

SCALE: 1" = 50'



CERTIFICATES:

This map was prepared by me or under my direction, and was compiled from a field survey in conformance with the requirements of the Subdivision Map Act at the request of Charles C. & Barbara M. Hicks in Dec. 1973. I hereby certify that it conforms to the approved tentative map and the conditions of approval thereof; that all provisions of applicable laws and local ordinances have been complied with.

Paul E. Simpson
Paul E. Simpson, Licensed Land Surveyor No. 3202
STATE OF CALIFORNIA

This map has been examined this 6th day of Sept., 1974 for conformance with the requirements of Section 11575 of the Subdivision Map Act.

Larry A. Fites
Larry A. Fites, Plumas County Engineer, R.C.E. 13225

Filed for record this 6th day of September, 1974 at 4:22 P.M. in Book 4 of Parcel Maps at page 104 at the request of Paul E. Simpson.
Fee: 5⁰⁰ File No. 104

Dorothy Neer Marley
Dorothy Neer Marley, Plumas County Recorder

I, the undersigned, County Tax Collector of the County of Plumas, State of California, do hereby certify that there are no tax liens against Parcels A, B, C or D, as shown hereon, or unpaid state, county, municipal or local taxes or special assessments collected as taxes, except taxes or assessments not yet payable. Taxes or assessments which are a lien but not yet payable, are estimated to be in the amount of \$415⁰⁰.

Douglas S. Redstreake
Douglas S. Redstreake, Plumas County Tax Collector

LEGEND:

- Set 3/4" I.P. tagged L.S. 3202 (except as noted)
- Found I.P. as noted.

NOTE:
Leachfields must be set back from the top of all cut slopes a minimum horizontal distance of four times the depth of cut. Cut banks must be revegetated in accordance with County standards for "Planting Soils To Grass."

PARCEL MAP FOR
CHARLES C. AND BARBARA M. HICKS
PORTION OF SECTIONS 20 & 21, T.28N., R.8E., M.D.B. & M.
PLUMAS COUNTY, CALIFORNIA

SCALE: 1" = 50'

PAUL E. SIMPSON, & ASSOCIATES, ENGINEERS & SURVEYORS
SUSANVILLE, CALIFORNIA