

**LOCATION MAP**  
(SCALE: 1"=1200')

**SURVEYOR'S CERTIFICATE**

THIS MAP WAS PREPARED BY ME OR UNDER MY DIRECTION, AND IS BASED UPON RECORD DATA IN CONFORMANCE WITH THE REQUIREMENTS OF THE SUBDIVISION MAP ACT AT THE REQUEST OF W.M. BEATY IN JULY 1974. I HEREBY CERTIFY THAT IT CONFORMS TO THE APPROVED TENTATIVE MAP AND THE CONDITIONS OF APPROVAL THEREOF; AND THAT ALL PROVISIONS OF APPLICABLE STATE LOCAL ORDINANCES HAVE BEEN COMPLIED WITH.

LOREN J. SARGENT *Loren J. Sargent* L.S. 2322

**COUNTY SURVEYOR'S CERTIFICATE**

THIS MAP HAS BEEN EXAMINED THIS 11<sup>th</sup> DAY OF Sept. 1974 FOR CONFORMANCE WITH THE REQUIREMENTS OF SECTION 11575 OF THE SUBDIVISION MAP ACT.

LARRY A FITES *Larry A. Fites* PLUMAS COUNTY SURVEYOR R.C.E. 1322.5

**PARCEL MAP**  
**FOR HARRIET HENDERSON ET AL**  
**IN SECTIONS 13 AND 24 T.28N. R.6E. M.D.M.**  
**AND IN SECTIONS 18 AND 19 T.28N. R.7E. M.D.M.**  
**IN THE UNINCORPORATED TERRITORY OF PLUMAS**  
**COUNTY CALIFORNIA.**

JULY 1974  
LOREN J. SARGENT

SCALE: 1"= 200'  
L.S. 2322

SHEET 1 OF 1

**TAX COLLECTOR'S CERTIFICATE**

I, THE UNDERSIGNED, TAX COLLECTOR OF THE COUNTY OF PLUMAS, STATE OF CALIFORNIA, DO HEREBY CERTIFY THAT THERE ARE NO TAX LIENS AGAINST PARCEL(S) AS SHOWN HEREON OR UNPAID STATE, COUNTY, OR LOCAL TAXES OR SPECIAL ASSESSMENTS NOT YET PAYABLE. TAXES OR ASSESSMENTS WHICH ARE A LIEN BUT NOT YET PAYABLE ARE ESTIMATED TO BE IN THE AMOUNT OF \$ 555.<sup>00</sup>

DOUGLAS S. REDSTRAKE *Douglas S. Redstrake* TAX COLLECTOR  
*Nancy Ann Alexander, Deputy*

**RECORDER'S CERTIFICATE**

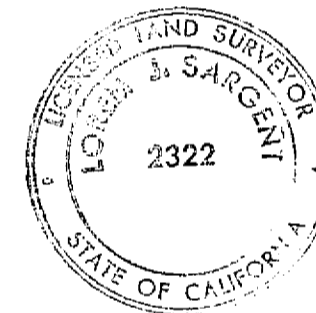
FILED THIS 11<sup>th</sup> DAY OF SEPT 1974, AT 2:30 P.M. IN BOOK 4 OF PARCEL MAPS AT PAGE 105 AT THE REQUEST OF COUNTY ENGINEER  
FEE: \$ 5.<sup>00</sup>

*Dorothy Neer Marley* By *Frank Thomas*, Deputy  
DOROTHY NEER MARLEY - PLUMAS COUNTY RECORDER

**LEGEND**

BASIS OF BEARINGS  
BOOK 1 R/S. 136

- ◆ INDICATES: FD. COR PER 1 R/S 136
  - ▣ INDICATES: FD STATE HWY. MON.
  - INDICATES: SET 3/4 PIPE L.S. 2322
  - ◇ INDICATES: CORNER LOCATION PER 1 R/S 136
- ALL DISTANCES ARE GROUND TO OBTAIN STATE GRID ZONE 1 DIST. DIVIDE BY 1.0002675



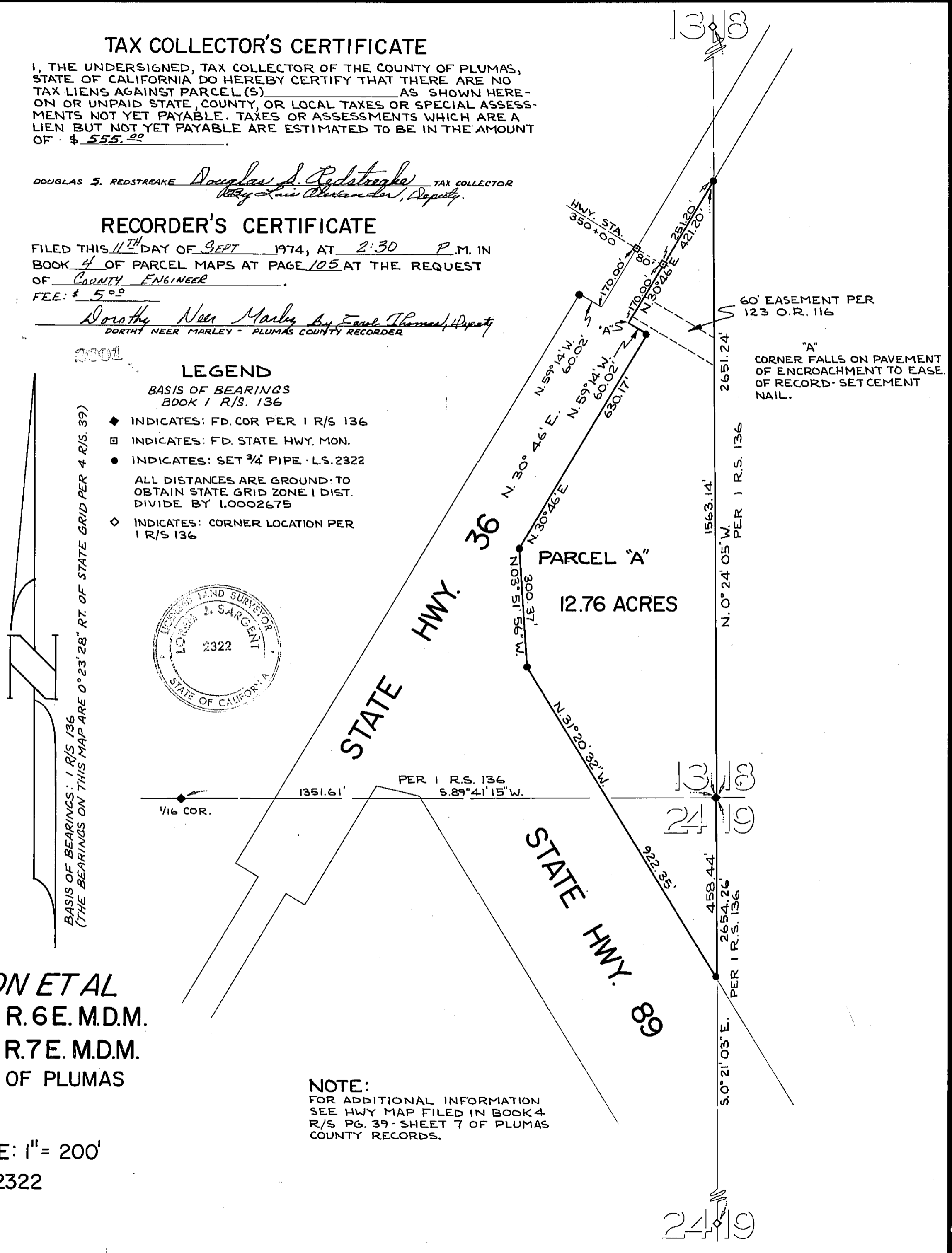
BASIS OF BEARINGS: 1 R/S 136  
(THE BEARINGS ON THIS MAP ARE 0°23'28" RT. OF STATE GRID PER 4 R/S. 39)

1/16 COR.

1351.61' PER 1 R.S. 136 5.89°41'15"W.

1/16 COR.

**NOTE:**  
FOR ADDITIONAL INFORMATION SEE HWY MAP FILED IN BOOK 4 R/S PG. 39 SHEET 7 OF PLUMAS COUNTY RECORDS.



*4pm 105*