

PARCEL 9

PARCEL 10

PARCEL 11

MIX

S.89°01'45"E (Rec. & Meas) 440.00'

PARCEL 12A
(1.2 AC)

43.06'
(Rec. & Meas)

ROGERS WITH TAG.
SET N4S WITH PAVEMENT
R.C.E. 11173 IN PAVEMENT

S.14°45'00"E 165.14'

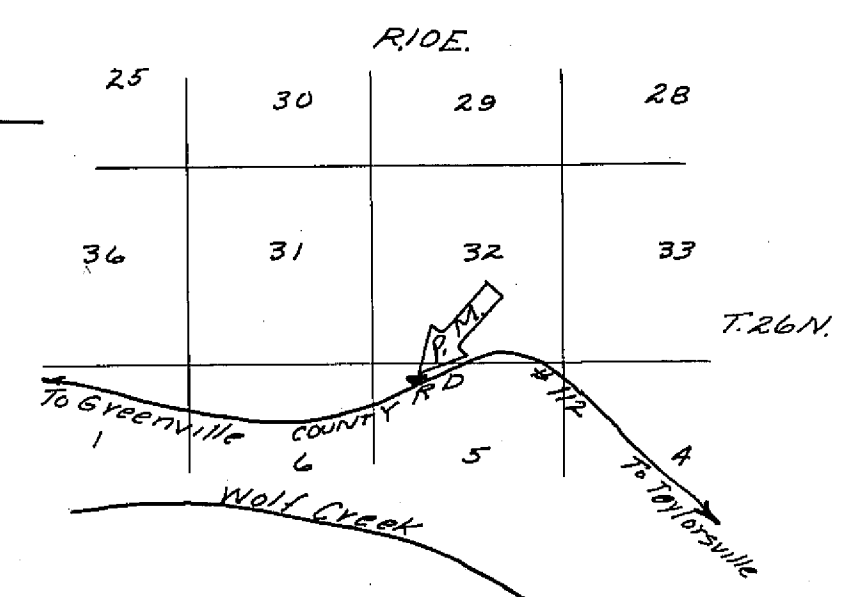
N74°39'20"E (Rec. & Meas) 412.60'
COUNTY ROAD NO. 12

30'
30'
60'

31.11'
31.11'

84.72'

157.00' (Rec. & Meas)
163.00'
157.00'
SOUTH
BASIS OF BEARINGS



LOCATION MAP
NO SCALE

- LEGEND**
- Found 1" Iron Pipe, R.C.E. 7294
 - Set 1/2" Steel Pin with plastic cap stamped R.C.E. 11173
 - N&S Nail and Shiner
 - Rec. Record (from deed, record map, etc.)
 - Meas. Measured
 - Ac. Acre
 - R.C.E. Registered Civil Engineer
 - ⊗ Found 3/8" steel pin with plastic cap R.C.E. 11173

NOTE
Tentative parcel map approved by Plumas County Planning Commission July 29, 1974.

SURVEYOR'S CERTIFICATE

This map was prepared by me or under my direction (and is based upon a field survey) in conformance with the subdivision Map Act at the request of Aletha H. Peck, August 13, 1974. I hereby certify that it conforms to the approved tentative map and the conditions of approval thereof; that all provisions of applicable state law and local ordinances have been complied with.

John C. Simpson
John C. Simpson
R.C.E. 11173

SATERSMOEN

BEING A PORTION OF PARCEL 12
GREENVILLE INDIAN RANCHERIA
(BOOK 2-PAGE 36, RECORD OF SURVEY)

COUNTY TAX COLLECTOR'S CERTIFICATE

I, the undersigned, County Tax Collector of the County of Plumas, State of California, do hereby certify that there are no tax liens against Parcel 12A as shown hereon or unpaid state, county, municipal, or local taxes, or spl. assessments collected as taxes, except taxes or assessments not yet payable. Taxes or assessments which are a lien but not yet payable, are estimated to be in the amount of \$45.⁰⁰

Douglas S. Redstreak
Douglas S. Redstreak
Plumas County Tax Collector
By *Lou Alexander*, Deputy

COUNTY SURVEYOR'S CERTIFICATE

This map has been examined this 11th day of September, 1974, for conformance with the requirements of Section 11575 of the Subdivision Map Act.

Larry A. Fites
Larry A. Fites, R.C.E. 13225
Plumas County Surveyor

RECORDER'S CERTIFICATE

Filed this 12th day of September, 1974, at 1:45 P.M. in Book of Parcel Maps at page 106 at the request of John C. Simpson

Donalyn Nees Marley
Plumas County Recorder

Fee \$5.00
File No. 2018



JOHN C. SIMPSON, P.E.
CIVIL ENGINEER
P.O. BOX 719
QUINCY, CALIFORNIA

PARCEL MAP
OF
SUBDIVISION OF ONE PARCEL

FOR
ALETHA H. PECK
RECORD OWNER
WITHIN
LOT 4 SEC. 5, T.26 N., R.10E, M.D.M.
PLUMAS COUNTY, CALIFORNIA