

LOCATION MAP

**BASIS OF BEARING:**

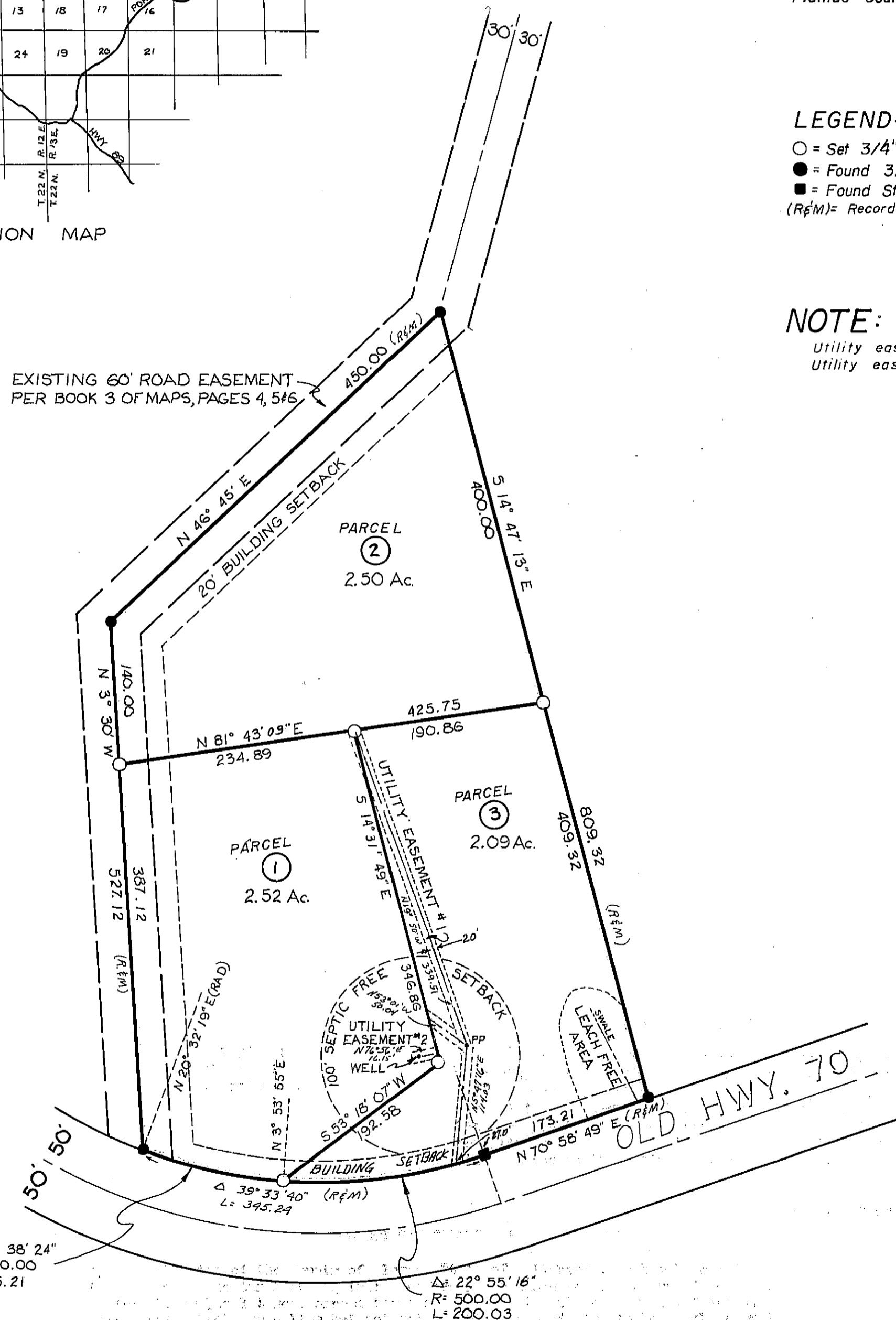
The Mohawk Vista Subdivision as shown on the map of same recorded in Book 3 of Maps at Pages 4, 5 and 6, Plumas County Records.

**LEGEND:**

- = Set 3/4" I.P. LS 2843
- = Found 3/4" I.P. RCE 7294
- = Found State Highway Monument
- (R&M) = Record and Measured

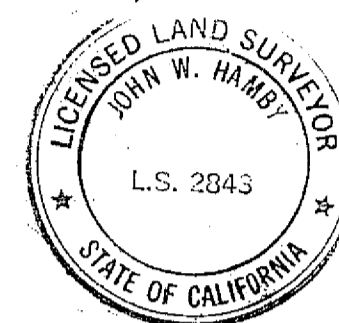
**NOTE:**

Utility easement No.1 is for power and telephone.  
Utility easement No.2 is for water.



**SURVEYOR'S CERTIFICATE**

This map correctly represents a survey made by me or under my direction and is based upon a field survey in conformance with the requirements of the Subdivision Map Act at the request of DOUGLAS MCKEAND on Feb. 16, 1977. I hereby state that the parcel map procedures of the local agency have been complied with and that this parcel map conforms to the approved tentative map and the conditions of approval thereof which were required to be fulfilled prior to the filing of the parcel map.



*John W. Hamby*  
John W. Hamby L.S. 2843

**COUNTY SURVEYOR'S CERTIFICATE**

This map conforms with the requirements of the Subdivision Map Act and local ordinance.

dated 5-17-77

*Larry A. Fites*  
Larry A. Fites, R.C.E. 13225  
County Engineer

**COUNTY TAX COLLECTOR'S CERTIFICATE**

I, Tax Collector of the County of Plumas, State of California, do hereby certify that there are no tax liens against the Parcels, as shown hereon, for unpaid county, municipal, or local taxes or special assessments collected as taxes, except taxes or assessments not yet payable. Taxes or assessments which are a lien but not yet payable, are estimated to be in the amount of \$ 245.00.

*Lois Alexander*  
Lois Alexander  
Plumas County Tax Collector

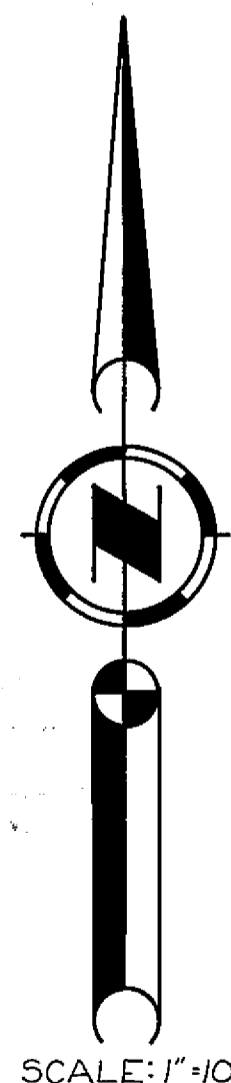
**RECORDER'S CERTIFICATE**

Filed this 17th day of MAY 1977 at 8:30 A.M. in Book 5 of Parcel Maps at Page 142 at the request of COUNTY ENGINEER

Fee \$5.00  
File No. 2924

Raynell Stoten  
County Recorder

*Kathie Doel*  
Kathie Doel  
Deputy



SCALE: 1" = 100'

**PARCEL MAP FOR DOUGLAS MCKEAND**

LOT 12 OF MOHAWK VISTA SUBDIVISION IN SECTION 13,  
T. 22 N., R. 12 E., M.D.B. & M.  
PLUMAS COUNTY, CALIFORNIA

By John W. Hamby  
Licensed Land Surveyor  
Portola  
LS 2843  
Surveyor  
California