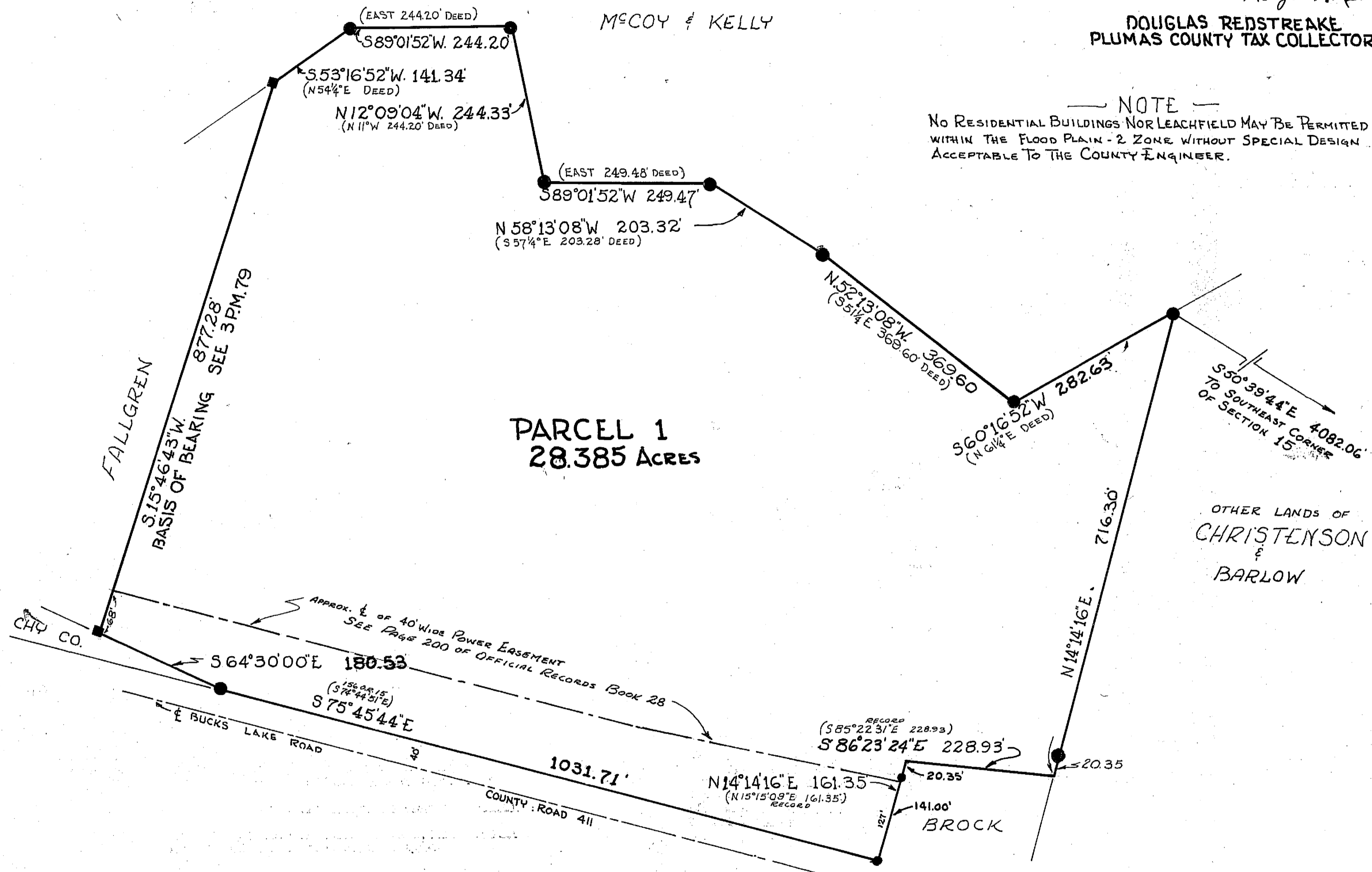
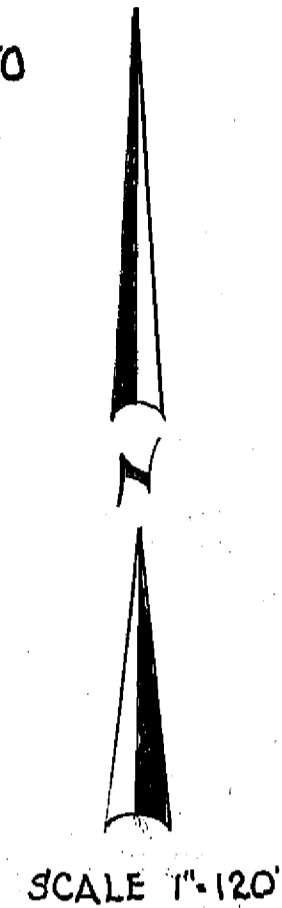


COUNTY TAX COLLECTOR'S CERTIFICATE
 I THE UNDERSIGNED, TAX COLLECTOR OF THE COUNTY OF PLUMAS, STATE OF CALIFORNIA, DO HEREBY CERTIFY THAT THERE ARE NO TAX LIENS AGAINST PARCEL #1 AS SHOWN HEREON OR UNPAID STATE, COUNTY, MUNICIPAL, OR LOCAL TAXES, OR SPECIAL ASSESSMENTS COLLECTED AS TAXES, EXCEPT TAXES OR ASSESSMENTS NOT YET PAYABLE. TAXES OR ASSESSMENTS WHICH ARE A LIEN BUT NOT YET PAYABLE, ARE ESTIMATED TO BE IN THE AMOUNT OF NONE

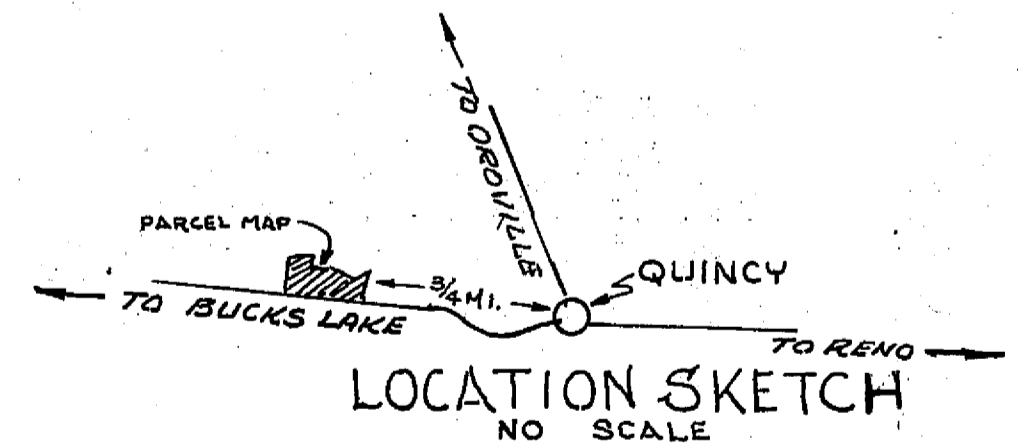
Douglas Redstreake
DOUGLAS REDSTREAKE
PLUMAS COUNTY TAX COLLECTOR

NOTE
 NO RESIDENTIAL BUILDINGS NOR LEACHFIELD MAY BE PERMITTED WITHIN THE FLOOD PLAIN - 2 ZONE WITHOUT SPECIAL DESIGN ACCEPTABLE TO THE COUNTY ENGINEER.



LEGEND

- SET I.P. TAGGED RCE 13528
- FND. MONUMENT TAGGED RCE 7294
- FND. MONUMENT TAGGED RCE 11173



PARCEL MAP

OF
 SUBDIVISION OF ONE PARCEL
 WITHIN SECTION 15, T 24 N, R 9 E, MDB & M
 PLUMAS COUNTY CALIFORNIA
CHRISTENSON & BARLOW
RECORD OWNERS

RECORDER'S CERTIFICATE

FILED THIS 24th DAY OF February
 1975, AT 11:00 A.M. IN BOOK 5
 OF PARCEL MAPS AT PAGE 3 AT
 THE REQUEST OF L.J. BROCK

Deputy Recorder
Plumas County Recorder

PLUMAS COUNTY RECORDER

Fee \$5.00

COUNTY SURVEYOR'S CERTIFICATE

THIS MAP HAS BEEN EXAMINED THIS 24th DAY OF February
 1975, FOR CONFORMANCE WITH THE REQUIREMENTS OF
 SECTION 11575 OF THE SUBDIVISION MAP ACT

Plumas County Surveyor
 PLUMAS COUNTY SURVEYOR

SURVEYOR'S CERTIFICATE

THIS MAP WAS PREPARED BY ME OR UNDER MY DIRECTION AND IS BASED UPON A FIELD SURVEY IN CONFORMANCE WITH THE REQUIREMENTS OF THE SUBDIVISION MAP ACT AT THE REQUEST OF STEVEN CHRISTENSON APRIL 25, 1974. I HEREBY CERTIFY THAT IT CONFORMS TO THE APPROVED TENTATIVE MAP AND THE CONDITIONS OF APPROVAL THEREOF, THAT ALL PROVISIONS OF APPLICABLE STATE AND LOCAL ORDINANCES HAVE BEEN COMPLIED WITH.

L.J. Brock
 L. J. BROCK
 RCE 13528