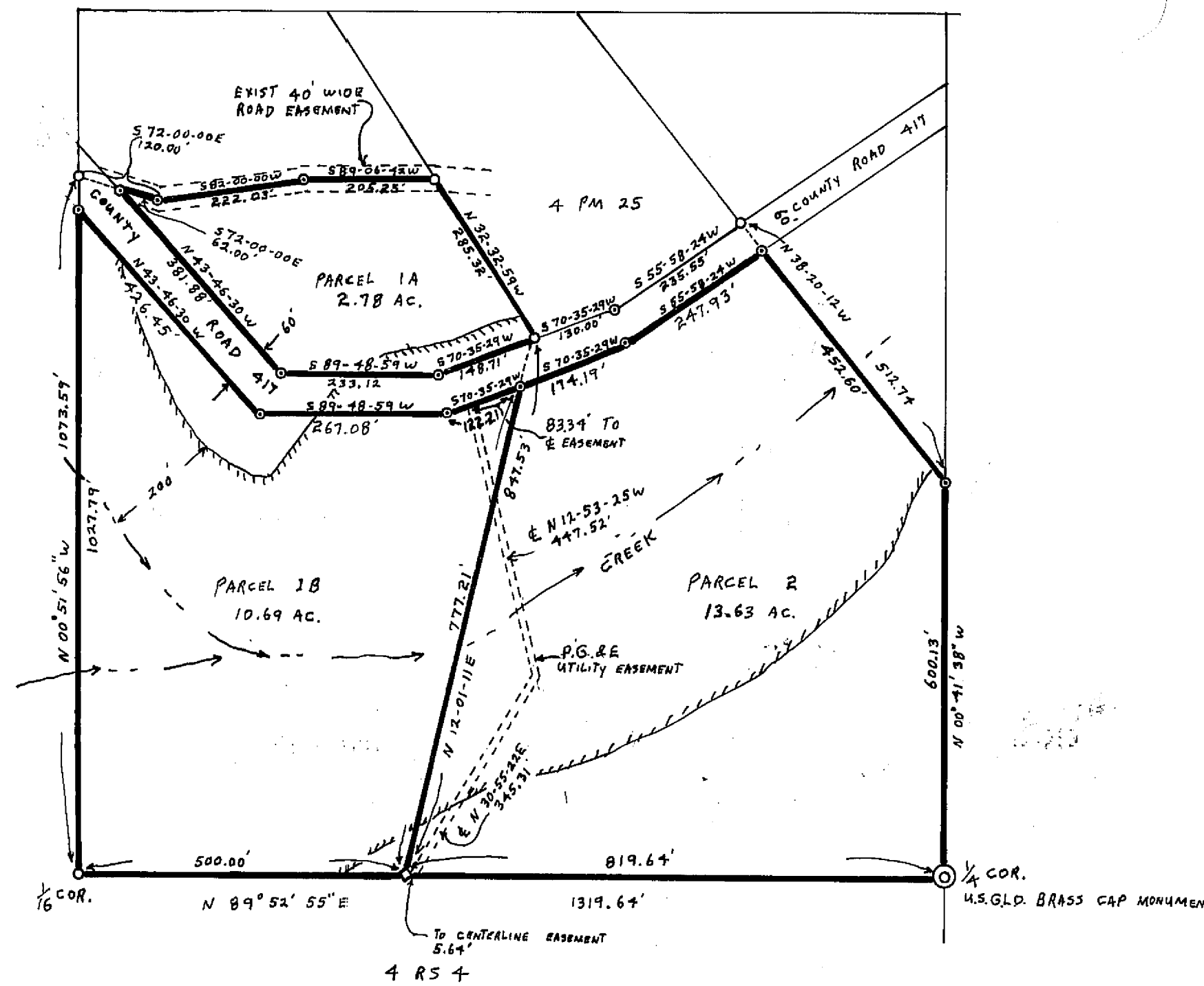
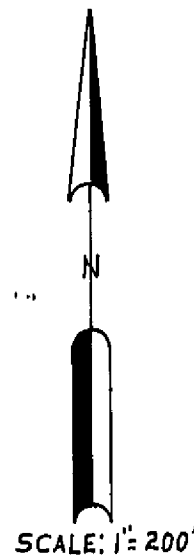
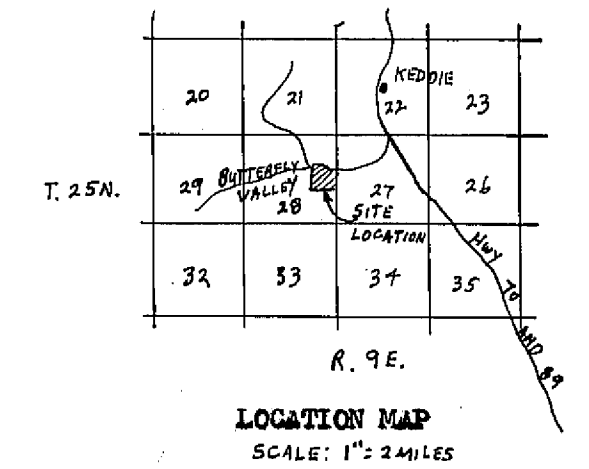


TAX COLLECTOR'S CERTIFICATE

I, THE UNDERSIGNED COUNTY TAX COLLECTOR OF THE COUNTY OF PLUMAS, STATE OF CALIFORNIA, DO HEREBY CERTIFY THAT THERE ARE NO TAX LIENS AGAINST PARCELS 1 AND 2 INCLUSIVE AS SHOWN HEREON, OR UNPAID STATE, COUNTY, MUNICIPAL, OR LOCAL TAXES, OR SPECIAL ASSESSMENTS COLLECTED AS TAXES EXCEPT TAXES OR ASSESSMENTS NOT YET PAYABLE. TAXES OR ASSESSMENTS WHICH ARE A LIEN BUT NOT YET PAYABLE ARE ESTIMATED TO BE IN THE AMOUNT OF NONE

Douglas S. Redstreak
DOUGLAS S. REDSTRAKE
PLUMAS COUNTY TAX COLLECTOR



SURVEYOR'S CERTIFICATE

THIS MAP WAS PREPARED BY ME OR UNDER MY DIRECTION AND IS BASED UPON A FIELD SURVEY IN CONFORMANCE WITH THE REQUIREMENTS OF THE SUBDIVISION MAP ACT AT THE REQUEST OF C. HENRICI IN OCTOBER 1974. I HEREBY CERTIFY THAT IT CONFORMS TO THE APPROVED TENTATIVE MAP AND THE CONDITIONS OF APPROVAL THEREOF, AND THAT ALL PROVISIONS OF APPLICABLE STATE LAW AND LOCAL ORDINANCES HAVE BEEN COMPLIED WITH.

Gerald C. Henderson
GERALD C. HENDERSON LS 3297

COUNTY SURVEYOR'S CERTIFICATE

THIS MAP HAS BEEN EXAMINED THIS 24th DAY OF February 1975 FOR CONFORMANCE WITH THE REQUIREMENTS OF SECTION 11575 OF THE SUBDIVISION MAP ACT.

Larry A. Fites
LARRY A. FITES RCR 13225
COUNTY SURVEYOR

COUNTY RECORDER'S CERTIFICATE

FILED THIS 25th DAY OF February, 1975, AT 1:15 PM., IN BOOK 51 OF PARCEL MAPS AT PAGE 4, AT THE REQUEST OF GERALD C. HENDERSON.

FEE \$500
RECORDING NO. 5106

Deborah Newberry
COUNTY RECORDER

PARCEL MAP

OF A SUBDIVISION INTO TWO PARTS
FOR
C. HENRICI
OCTOBER 1974
PORTION OF SECTION 28, T. 25N., R. 9E., M.D.M.
PARCEL 4 IN BOOK 4 OF PARCEL MAPS AT PAGE 25
PLUMAS COUNTY, CALIFORNIA

GERALD C. HENDERSON
LICENSED LAND SURVEYOR
P.O. BOX 13
PORTOLA, CALIFORNIA

NOTES

1. BASIS OF BEARING IS TAKEN FROM THAT CERTAIN MAP FILED IN BOOK 4 OF PARCEL MAPS AT PAGE 25 PLUMAS COUNTY RECORDS.
2. CONDITIONS OF PLANNING COMMISSION APPROVAL INCLUDE THE FOLLOWING:
 - A) THAT NO STRUCTURES (EXCEPT FOR ANIMALS) NOR GRADING OR FILLING BE PERMITTED IN THE AREA BELOW THE MAIN ROADWAY.
 - B) THAT ALL ROOF CONSTRUCTION BE OF INCOMBUSTIBLE OR FIRE-RETARDANT TREATED MATERIALS.
3. TENTATIVE MAP APPROVED BY THE ZONING ADMINISTRATION ON OCTOBER 16, 1974 SUBJECT TO PARCEL 2 BEING AGGREGATED TO THE LANDS OF HENRICI TO THE SOUTH.
4. Parcels 1A and 1B are one aggregated parcel and shall not be sold separately without Planning Commission approval.

LEGEND

- FOUND 1/2" OR 3/4" IP TAGGED LS 3297
- SET 3/4" IP TAGGED LS 3297
- COMPUTED CORNER LOCATION
- 1/4 CORNER AS COMPUTED FROM 4 RS 4
- LEACH SETBACK LINE



OTF CORR 6/17/95 # 3168 24 656 P 373