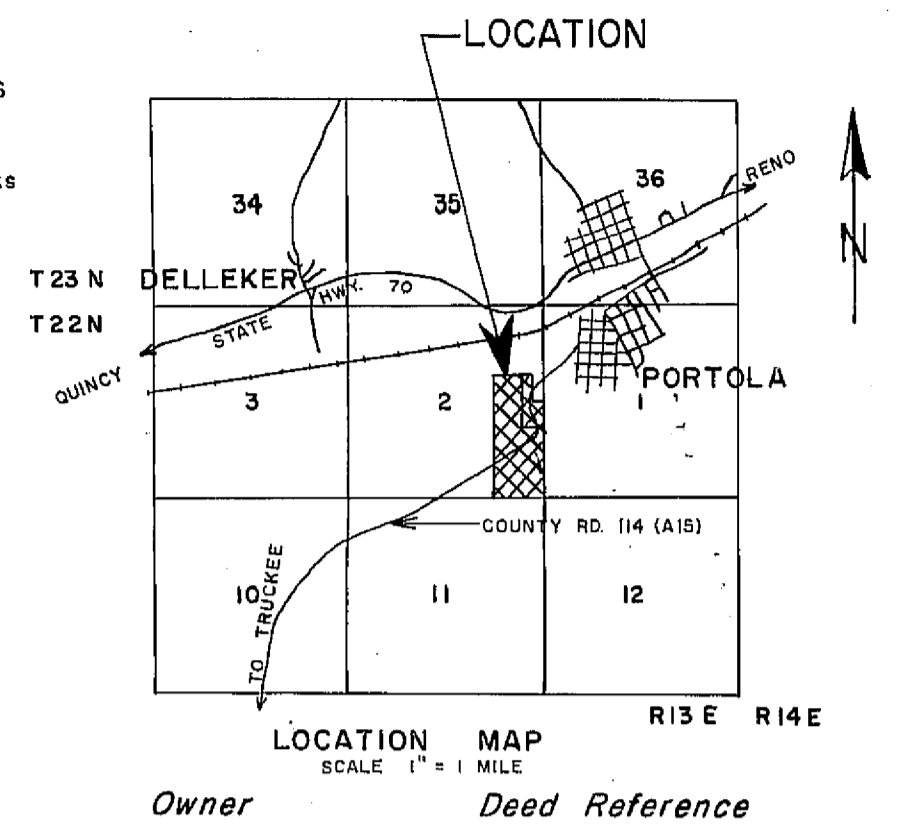
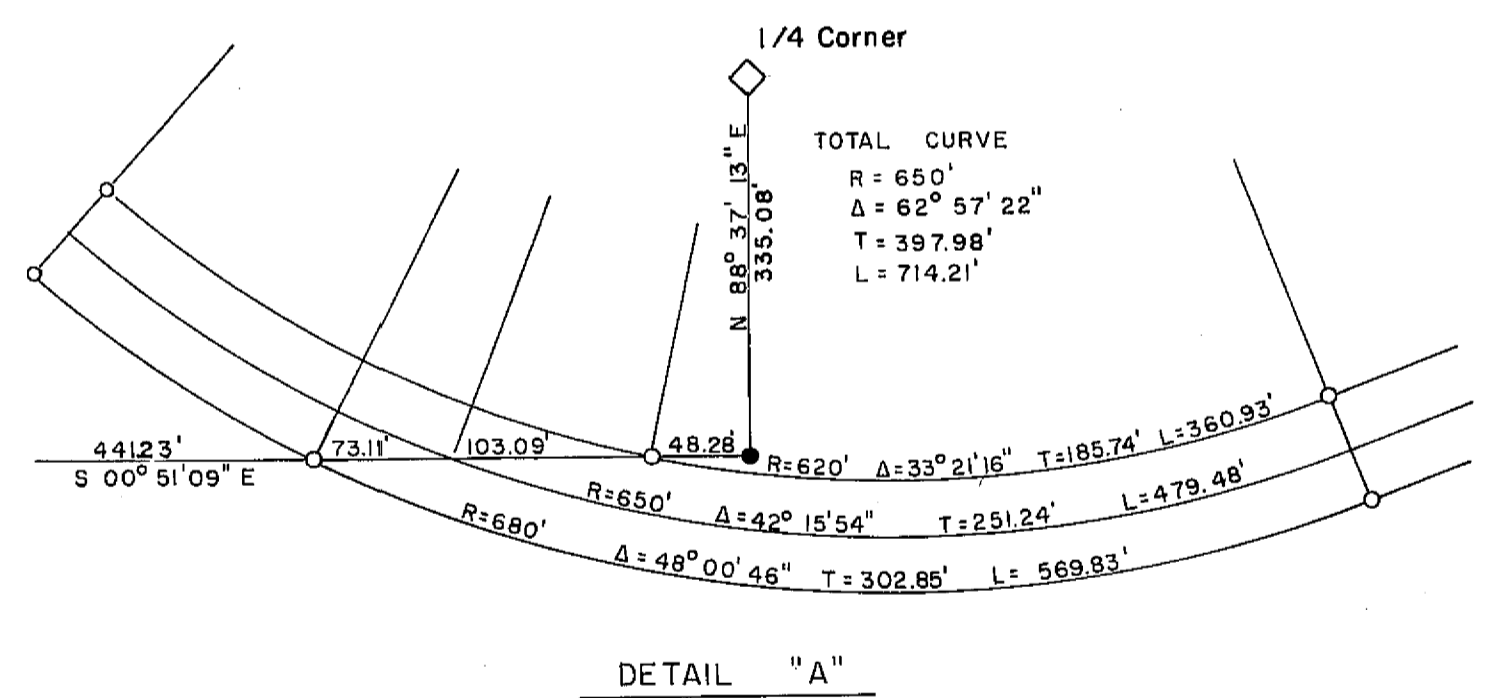


N. 170,729.209
E. 2,428,484.456
Found 1/2" I.P. in Mound of Rocks



Found 1/2" I.P.
12" N of Fence Corner



CITY ENGINEER'S AND
COUNTY ENGINEER'S CERTIFICATE

This map conforms with requirements of the Subdivision Map Act and local ordinance.
Dated: 5-29-75

Sam A. Fite
Plumas County Engineer

Richard A. Sypher
Portola Engineer

SURVEYOR'S CERTIFICATE

This map was prepared by me or under my direction and was compiled from a field survey in conformance with the Sub-division Map Act at the request of the Plumas County Board of Supervisors in February, 1975. I hereby certify that it conforms to the approved tentative map and the conditions of approval thereof; that all provisions of applicable state law and local ordinances have been complied with.

L.J. Brock
L.J. Brock, R.C.E. 13528
Plumas County Road Commissioner

RECORDER'S CERTIFICATE

Filed this 29th day of MAY, 1975, at 3:00 P.M. in Book 5 of Parcel Maps at Page 13 at the request of L.J. Brock

Dorothy Neer Masley
Plumas County Recorder

Fee None
File No. 6672 by *Lana S. Brown, Deputy*

COUNTY TAX COLLECTOR'S CERTIFICATE

I, the undersigned, County Tax Collector of the County of Plumas State of California, do hereby certify that there are no tax liens against Parcels 1, 2, 3, & 4 as shown hereon or unpaid state, county, municipal or local taxes, or special assessments collected as taxes, except taxes or assessments not yet payable. Taxes or assessments which are a lien but not yet payable, are estimated to be in the amount of \$660.00

Wagner Redstienke
Plumas County Tax Collector

NOTE

Distances shown are ground distances. All bearings are grid, based on Calif. coordinate system zone I. Multiply distances by 0.9998137 to obtain grid distances. Coordinates were established from the Survey of a Control Line, Record of Survey Book 3 Page 61, Plumas County Records.

LEGEND

- ◊ Found Monument as Described
- Set 1/2" I.P. Tagged R.C.E. 13528
- I.P. Iron Pipe
- Found 1/2" I.P. Tagged R.C.E. 13528 as per Record of Survey Book 4 Page 86, Plumas County Records.

PARCEL MAP
OF
SUBDIVISION OF FOUR PARCELS

FOR
TZVETAN A. & ALICE Z. LITOV
WITHIN THE E 1/2 OF THE E 1/2 OF SECTION 2
T.22N., R.13E., M.D.B. & M.
PLUMAS COUNTY, CALIF.

L.J. BROCK, R.C.E. 13528
PLUMAS COUNTY
ROAD COMMISSIONER
QUINCY, CALIFORNIA