

PARCEL MAP
 PORTION OF LOTS 43, 44, 45, 46 & 50
 WITHIN SECTIONS 3, 4, 9 & 10
 TOWNSHIP 21 NORTH, RANGE 9 EAST, M. D. B.M.

PLUMAS COUNTY CALIFORNIA

ASSESSOR PARCEL NO. 3-390-19

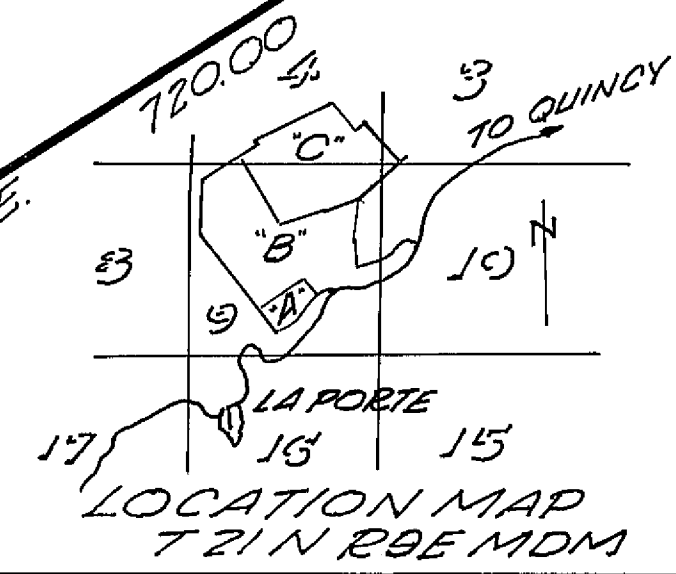
WILSON & CO. SURVEYORS & ENGINEERS
 1512 FRANKLIN ST. OAKLAND, CALIF.
 451-5791 SCALE: 1" = 100' SEPT., 1974

Basis of bearings:
 The bearings on this map are based on the dependent resurvey as shown on the map entitled "Dependent Resurvey of Halsey Placer Mine (M.S. 2529) and Bald Mtn. Placer (M.S. 1238)" filed Dec. 28, 1965 in book 3 of surveys at page 52.

N. 59°04'35"E. 1597.83

PARCEL "A"

28.41 ACS. ±



RECORDER'S CERTIFICATE

Filed this 16th day of June, 1975, at 10:30 AM. in book 5 of Parcel Maps at page 16 at the request of Phyllis F. Anderson

6498 Dorothy Ann Massey by Halsey Placer County Recorder

COUNTY TAX COLLECTOR'S CERTIFICATE

I, Tax collector of the County of Plumas, State of California, do hereby certify that there are no tax liens against the parcels, as shown hereon, for unpaid county, municipal, or local taxes or special assessments collected as taxes, except taxes or assessments not yet payable. Taxes or assessments which are a lien but not yet payable, are estimated to be in the amount of \$739.

Douglas S. Redstreak
 Douglas S. Redstreak
 Plumas County Tax Collector

SURVEYOR'S CERTIFICATE

This map was prepared by me or under my direction and is based upon a field survey in conformance with the requirements of the subdivision map act at the request of Phyllis F. Anderson on July, 1974. I hereby certify that it conforms to the approved tentative map and the conditions of approval thereof.

Albert H. DeVoe
 Albert H. DeVoe L.S. 3079

LEGEND:

- Found 2" pipe ———— ⊙ ————
- Found 1" pipe ———— ○ ————
- Set 2" pipe L.S. 3079 ———— ⊙ ————
- Set 1" pipe L.S. 3079 ———— ● ————

COUNTY SURVEYOR'S CERTIFICATE

This map has been examined this 16th day of June, 1975, for conformance with the requirements of the subdivision map act, and local ordinance.

County Surveyor
 SHEET NO. 1 OF 1 SHEETS

DEC ESMT 243 OR 347

5 PM 16