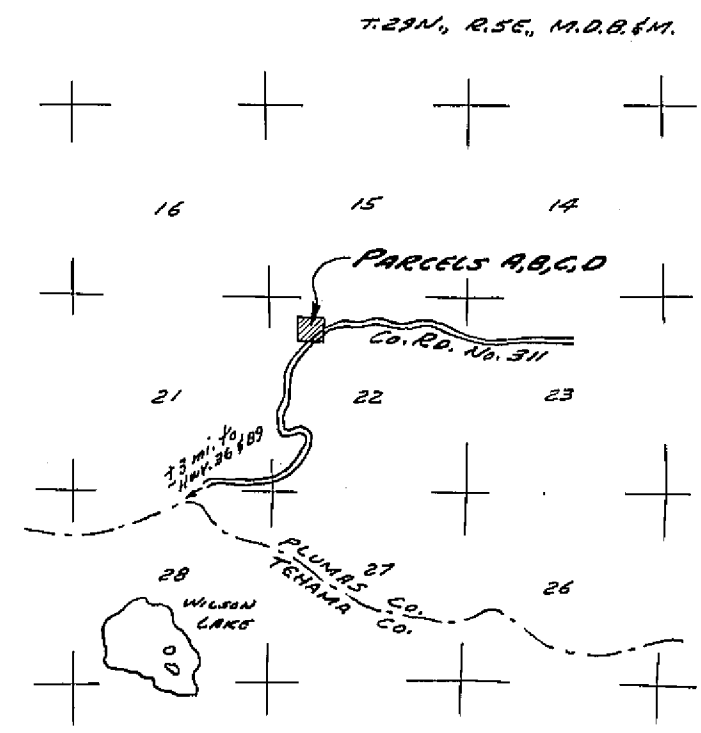
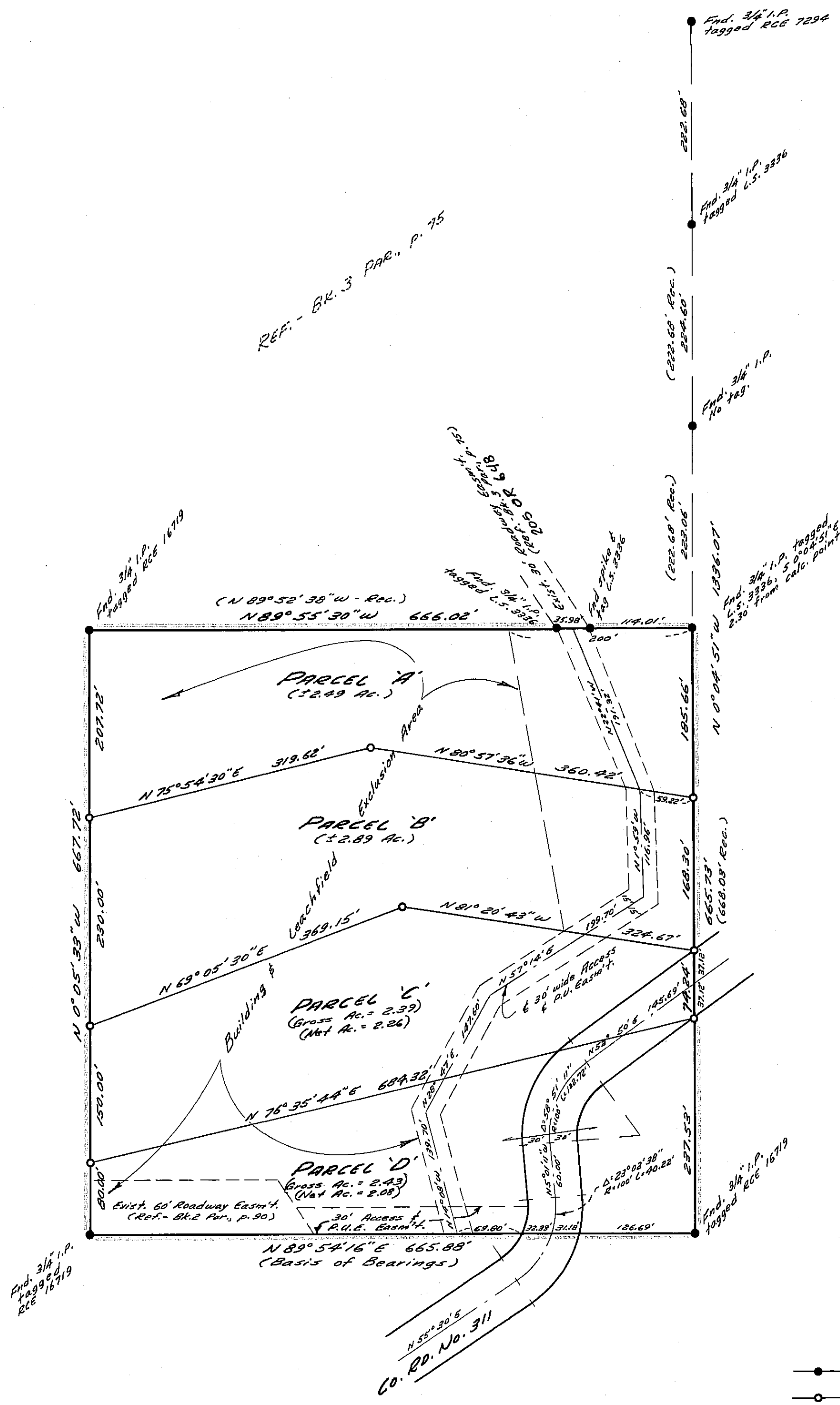
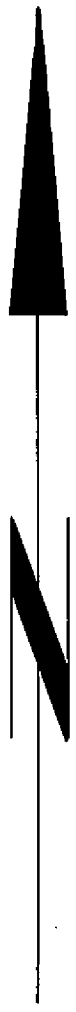
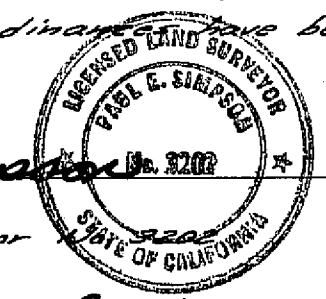


SCALE: 1" = 100'



VICINITY MAP
SCALE: 1" = 1 MILE

SURVEYOR'S CERTIFICATE:
This map was prepared under my direction and was compiled from a field survey in conformance with the requirements of the Subdivision Map Act at the request of Barbara M. Hicks in June, 1978. I hereby certify that it conforms to the approved tentative map and the conditions of approval thereof; that all provisions of applicable state laws and local ordinances have been complied with.



Paul E. Simpson
Paul E. Simpson,
Licensed Land Surveyor

COUNTY SURVEYOR'S CERTIFICATE:
This map has been examined this 1st day of July, 1978, for conformance with the requirements of Section 26200 of the Subdivision Map Act.

Larry A. Fife
Larry A. Fife, R.C.E. 13225,
Plumas County Engineer

COUNTY RECORDER'S CERTIFICATE:
Filed for record this 1st day of July, 1978 at 4:00, P.M. in Book 5 of Parcel Maps at page 17 at the request of Paul E. Simpson.
Fee: \$5.00 File No: 21

Dorothy Near Marley by Kirby L. Leland
Dorothy Near Marley
Plumas County Recorder

COUNTY TAX COLLECTOR'S CERTIFICATE:
I, the undersigned County Tax Collector of the County of Plumas, State of California, do hereby certify that there are no tax liens against Parcels A, B, C & D as shown hereon, or unpaid state, county, municipal or local taxes or special assessments collected as taxes, except taxes or assessments not yet payable. Taxes or assessments which are a lien but not yet payable, are estimated to be in the amount of \$120.00.

Douglas S. Redstreak
Douglas S. Redstreak
Plumas County Tax Collector

PARCEL MAP FOR
BARBARA M. HICKS
BEING PARCEL 1, BOOK 2 OF PARCEL MAPS, PAGE 90
IN THE NW 1/4, NW 1/4, SECTION 22,
T29N, R5E, M2B1M,
PLUMAS COUNTY, CALIFORNIA
SCALE: 1" = 100'

PAUL E. SIMPSON & ASSOCIATES
ENGINEERING, PLANNING & SURVEYING
SUSANVILLE, CALIFORNIA

LEGEND
● Found monument as noted.
○ Set 3/4" I.P. tagged L.S. 3202.