

**TAX COLLECTOR'S CERTIFICATE**

I, THE UNDERSIGNED, COUNTY TAX COLLECTOR OF THE COUNTY OF PLUMAS STATE OF CALIFORNIA, DO HEREBY CERTIFY THAT THERE ARE NO LIENS AGAINST PARCELS 1, 2 AND 3 AS SHOWN HEREON OR UNPAID STATE, COUNTY OR LOCAL TAXES OR SPECIAL ASSESSMENTS COLLECTED AS TAXES, OR ASSESSMENTS NOT YET PAYABLE. TAXES OR ASSESSMENTS WHICH ARE A LEIN BUT NOT YET PAYABLE ARE ESTIMATED TO BE IN THE AMOUNT OF \$1,785.00.

*Walter Reddick*  
PLUMAS COUNTY TAX COLLECTOR

**SURVEYOR'S CERTIFICATE**

THIS MAP WAS PREPARED BY ME OR UNDER MY DIRECTION AND WAS COMPILED FROM RECORD DATA AND IS BASED UPON A FIELD SURVEY IN CONFORMANCE WITH THE REQUIREMENTS OF THE SUBDIVISION MAP ACT AT THE REQUEST OF ED DAHLMEYER ON JUNE, 1975. I HEREBY CERTIFY THAT IT CONFORMS TO THE APPROVED TENTATIVE MAP AND THE CONDITIONS OF APPROVAL THEREOF, THAT ALL PROVISIONS OF APPLICABLE STATE LAW AND ORDINANCES HAVE BEEN COMPLIED WITH.

*Paul Cook*

**COUNTY SURVEYOR'S CERTIFICATE**

THIS MAP HAS BEEN EXAMINED THIS 1<sup>st</sup> DAY OF July, 1975, FOR CONFORMANCE WITH THE REQUIREMENTS OF SECTION 4675 OF THE SUBDIVISION MAP ACT.

*Ray A. Fite*

**RECORDER'S CERTIFICATE**

FILED THIS 1<sup>st</sup> DAY OF July, 1975 AT 4:00 PM. IN BOOK 5 OF PARCEL MAPS AT PAGE 18 AT THE REQUEST OF COOK ASSOCIATES.

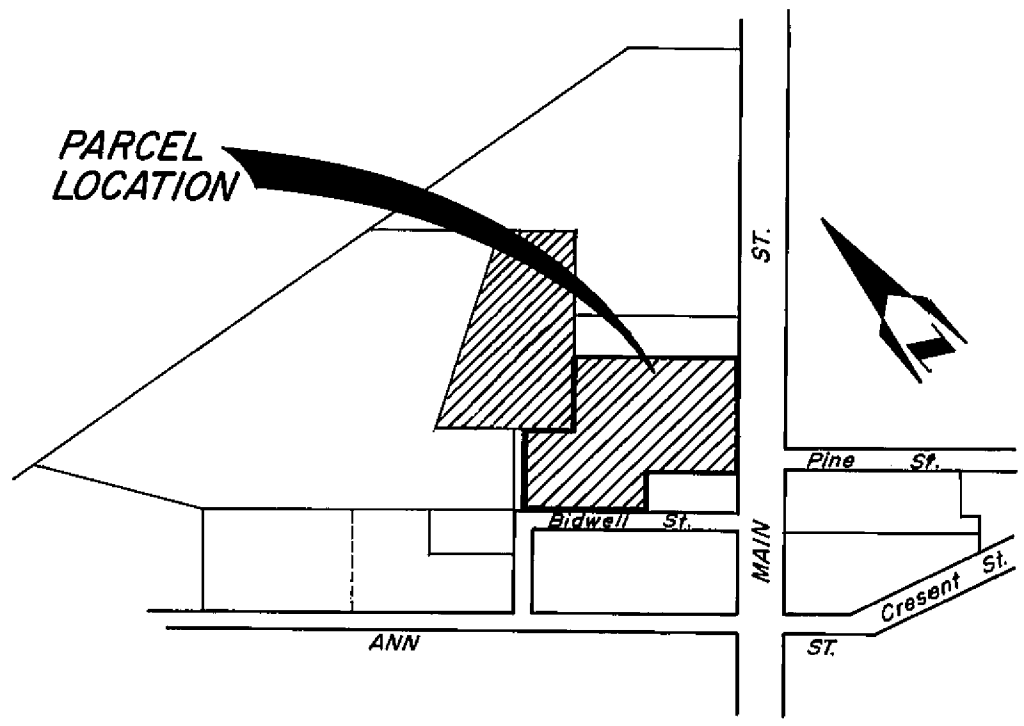
*Dorothy Greenway*  
COUNTY RECORDER

FEE \$5.00  
FILE NO. 18

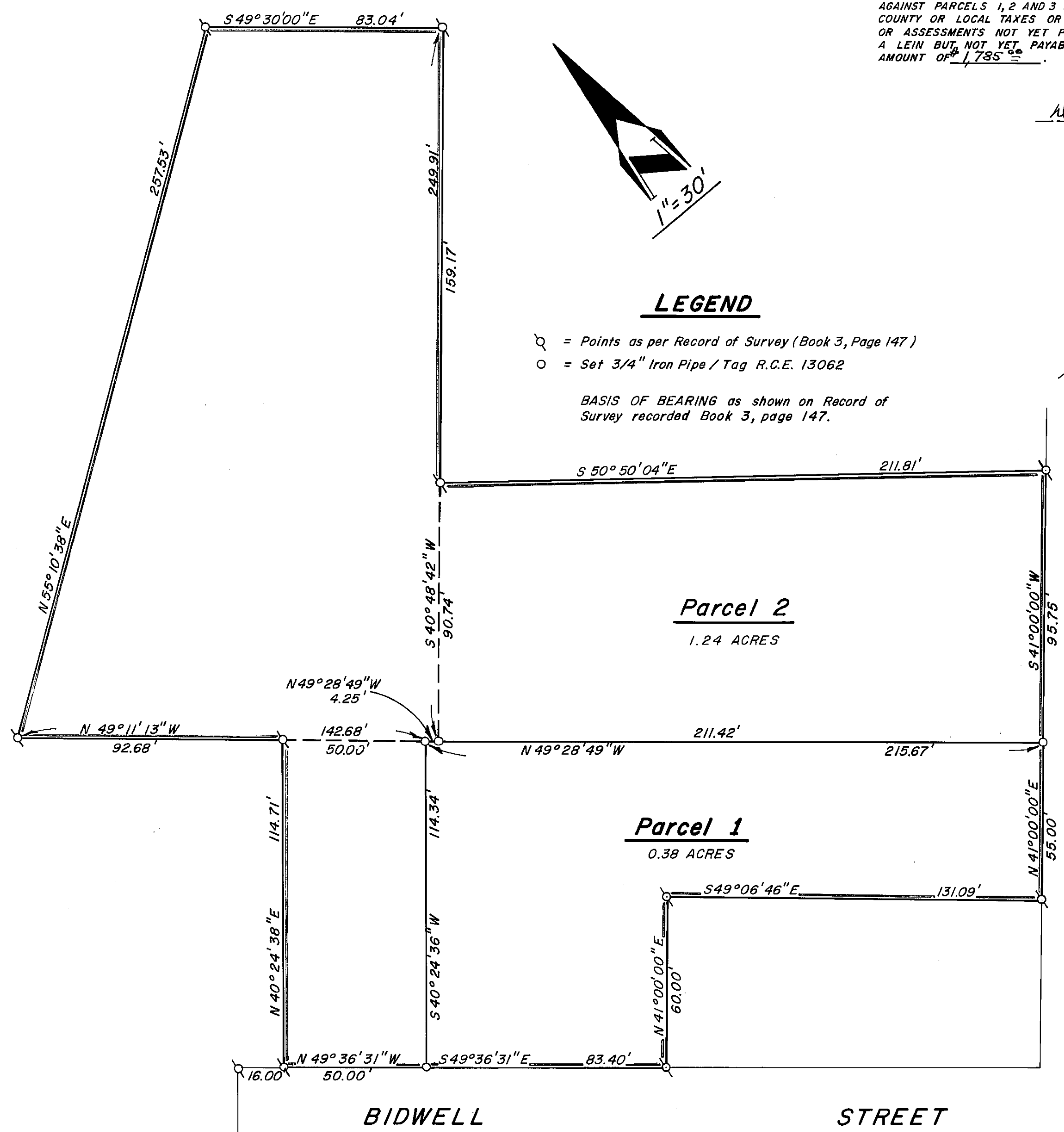
**LEGEND**

- = Points as per Record of Survey (Book 3, Page 147)
- = Set 3/4" Iron Pipe / Tag R.C.E. 13062

BASIS OF BEARING as shown on Record of Survey recorded Book 3, page 147.



**LOCATION MAP**  
Not to Scale.



**PARCEL MAP FOR BATSON**

PORTION LOTS 5, 6, 14 & 17,  
BLOCK 3, TOWNSITE OF  
GREENVILLE, PLUMAS  
COUNTY, CA.  
(SE 1/4, SECTION 3,  
T 26 N, R 9 E, MDM)

**COOK ASSOCIATES**  
ENGINEERING CONSULTANTS  
2060 PARK AVENUE  
OROVILLE, CALIFORNIA 95965  
SHEET 1 OF 1 SHEETS

Dec of Rest 243 or 775

5 PM 18