

TAX COLLECTOR'S CERTIFICATE

I, THE UNDERSIGNED COUNTY TAX COLLECTOR OF THE COUNTY OF PLUMAS, STATE OF CALIFORNIA, DO HEREBY CERTIFY THAT THERE ARE NO TAX LIENS AGAINST PARCELS 1 THROUGH 4 INCLUSIVE AS SHOWN HEREON, OR UNPAID STATE, COUNTY, MUNICIPAL, OR LOCAL TAXES, OR SPECIAL ASSESSMENTS COLLECTED AS TAXES EXCEPT TAXES OR ASSESSMENTS NOT YET PAYABLE. TAXES OR ASSESSMENTS WHICH ARE A LIEN BUT NOT YET PAYABLE ARE ESTIMATED TO BE IN THE AMOUNT OF \$245.00

Douglas S. Redstrake
DOUGLAS S. REDSTRAKE

SURVEYOR'S CERTIFICATE

THIS MAP WAS PREPARED BY ME OR UNDER MY DIRECTION AND IS BASED UPON A FIELD SURVEY IN CONFORMANCE WITH THE REQUIREMENTS OF THE SUBDIVISION MAP ACT AT THE REQUEST OF L. LYDER IN JUNE 1974. I HEREBY CERTIFY THAT IT CONFORMS TO THE APPROVED TENTATIVE MAP AND THE CONDITIONS OF APPROVAL THEREOF, AND THAT ALL PROVISIONS OF APPLICABLE STATE LAW AND LOCAL ORDINANCES HAVE BEEN COMPLIED WITH.

Gerald C. Henderson
GERALD C. HENDERSON LS 3297

COUNTY SURVEYOR'S CERTIFICATE

THIS MAP HAS BEEN EXAMINED FOR CONFORMANCE WITH THE REQUIREMENTS OF SECTION 11575 OF THE SUBDIVISION MAP ACT THIS 21ST DAY OF July 1975.

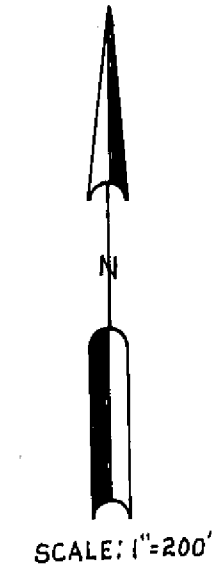
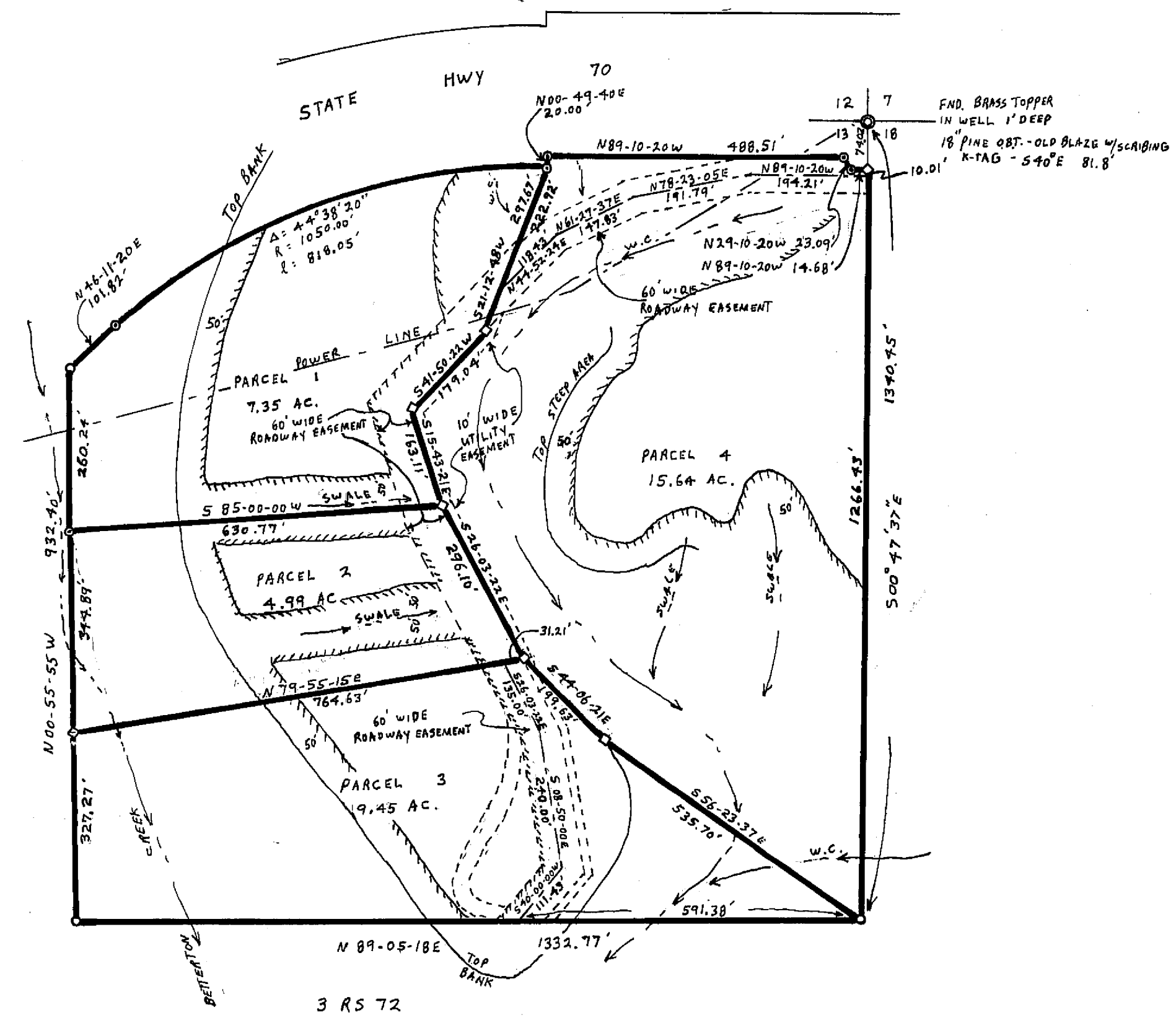
Larry A. Fites
LARRY A. FITES RCR 13225

COUNTY RECORDER'S CERTIFICATE

FILED THIS 21ST DAY OF July 1975, AT 9:25 AM, IN BOOK 5 OF PARCEL MAPS AT PAGE 25 AT THE REQUEST OF GERALD C. HENDERSON.

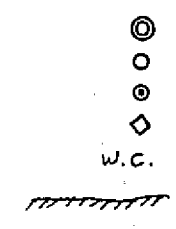
FEE \$5.00
RECORDING NO. 336

Dorothy Gay Maresy
COUNTY RECORDER Kathy Jepslander



NOTE
BASIS OF BEARING IS TAKEN FROM THAT CERTAIN MAP FILED IN BOOK 3 OF RECORD OF SURVEYS AT PAGE 72, PLUMAS COUNTY RECORDS.

LEGEND
 FOUND SECTION CORNER DESCRIBED HEREON
 FOUND 3/4" IF TAGGED LS 2846
 COMPUTED CORNER LOCATION
 SET 3/4" IF TAGGED LS 3297
 WATERCOURSE
 LBRCH SETBACK LINE



PARCEL MAP

OF A SUBDIVISION INTO FOUR PARTS
 FOR
 L. LYDER JUNE 1974
 PORTION OF NE 1/4 OF NE 1/4 OF SECTION 19, T. 22N., R. 12E., MDM
 PARCEL 4, BOOK 3 OF PARCEL MAPS AT PAGE 89
 PLUMAS COUNTY, CALIFORNIA

GERALD C. HENDERSON
 LICENSED LAND SURVEYOR
 P. O. BOX 13
 PORTOLA, CALIFORNIA