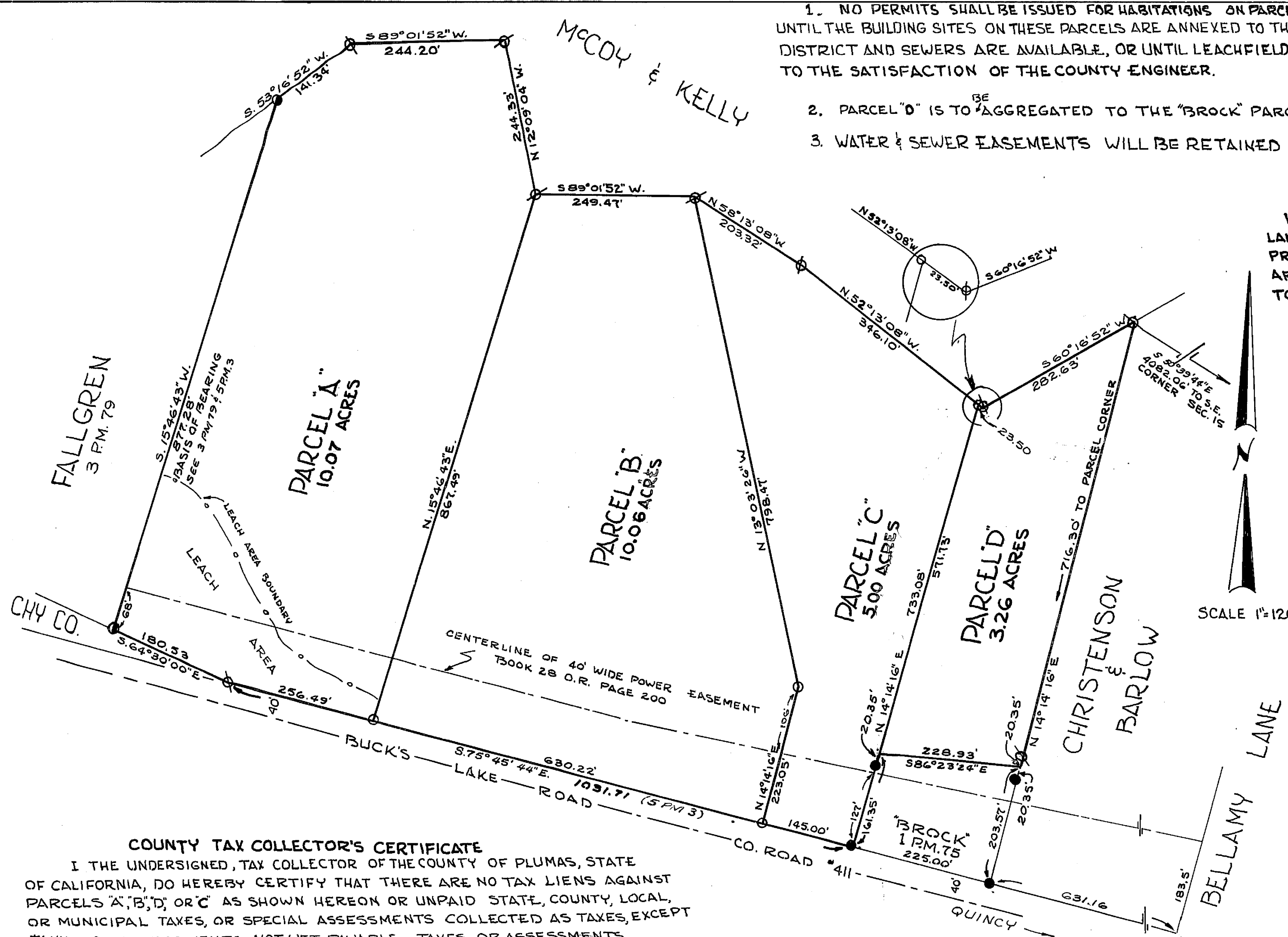


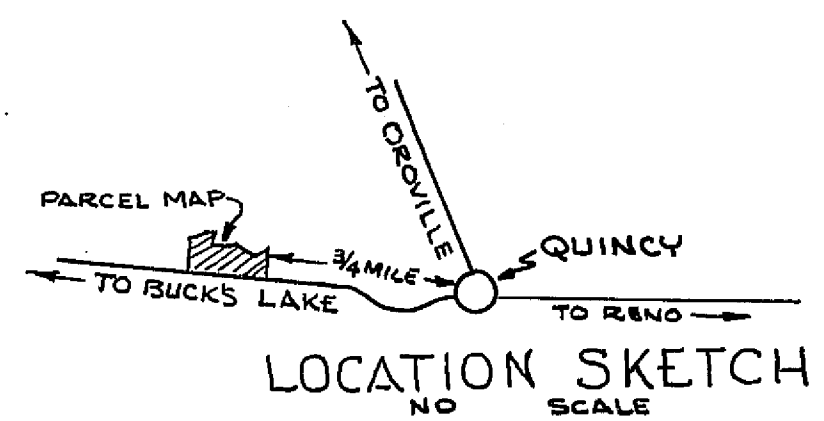
1. NO PERMITS SHALL BE ISSUED FOR HABITATIONS ON PARCELS "B" OR "C" UNTIL THE BUILDING SITES ON THESE PARCELS ARE ANNEXED TO THE QCY SANITARY DISTRICT AND SEWERS ARE AVAILABLE, OR UNTIL LEACHFIELDS ARE DEVELOPED TO THE SATISFACTION OF THE COUNTY ENGINEER.
2. PARCEL "D" IS TO BE AGGREGATED TO THE "BROCK" PARCEL SHOWN HEREON.
3. WATER & SEWER EASEMENTS WILL BE RETAINED ACROSS PARCEL "C"



OWNERS' CERTIFICATE
 WE HEREBY CERTIFY THAT WE ARE THE OWNERS OF THE LAND SHOWN ON THIS PARCEL MAP AND CONSENT TO THE PREPARATION AND RECORDING OF THIS MAP, AND WE ARE THE ONLY PERSONS WHOSE CONSENT IS REQUIRED TO PASS TITLE TO SAID LAND.

MAYBE INVESTMENTS
 BY Suzanne Barlow, Partner
 TITLE _____
 TITLE _____

- LEGEND**
- SET 1/2" I.P. TAGGED RCE 13528
 - ⊗ FND 1/2" I.P. TAGGED RCE 13528
 - FND MONUMENT TAGGED RCE 7294
 - FND MONUMENT TAGGED RCE 11173



PARCEL MAP
 OF
 SUBDIVISION OF FOUR PARCELS
 WITHIN SECTION 15, T.24N., R.9E., M.D.B. & M
 PLUMAS COUNTY
 CALIFORNIA

RECORD OWNERS
MAYBE INVESTMENTS
 AUGUST 1975

SURVEYOR'S CERTIFICATE
 THIS MAP WAS PREPARED BY ME AND IS BASED UPON A FIELD SURVEY IN CONFORMANCE WITH THE REQUIREMENTS OF THE SUBDIVISION MAP ACT AT THE REQUEST OF G. KNOX. JULY 1975, I HEREBY CERTIFY THAT IT CONFORMS TO THE APPROVED TENTATIVE MAP AND THE CONDITIONS OF APPROVAL THEREOF, THAT ALL PROVISIONS OF APPLICABLE STATE & LOCAL ORDINANCES HAVE BEEN COMPLIED WITH.

S. J. Brock RCE 13528

COUNTY SURVEYOR'S CERTIFICATE
 THIS MAP HAS BEEN EXAMINED THIS 5th DAY OF September 1975 FOR CONFORMANCE WITH THE REQUIREMENTS OF THE APPLICABLE SECTIONS OF THE SUBDIVISION MAP ACT

Dana S. Brown
 PLUMAS COUNTY SURVEYOR

COUNTY TAX COLLECTOR'S CERTIFICATE
 I THE UNDERSIGNED, TAX COLLECTOR OF THE COUNTY OF PLUMAS, STATE OF CALIFORNIA, DO HEREBY CERTIFY THAT THERE ARE NO TAX LIENS AGAINST PARCELS "A", "B", "D", OR "C" AS SHOWN HEREON OR UNPAID STATE, COUNTY, LOCAL, OR MUNICIPAL TAXES, OR SPECIAL ASSESSMENTS COLLECTED AS TAXES, EXCEPT TAXES OR ASSESSMENTS NOT YET PAYABLE. TAXES OR ASSESSMENTS WHICH ARE A LIEN BUT NOT YET PAYABLE, ARE ESTIMATED TO BE IN THE AMOUNT OF \$350.00

Douglas S. Redstreak
 DOUGLAS REDSTREAK
 PLUMAS COUNTY TAX COLLECTOR

RECORDER'S CERTIFICATE
 FILED THIS 5th DAY OF SEPT 1975, AT 2:10 PM IN BOOK 5-1 OF PARCEL MAPS AT PAGE 33 AT THE REQUEST OF COUNTY ENGINEER

FEE \$5.00
 FILE # 149

Denothy Ann Masterson
 PLUMAS COUNTY RECORDER