

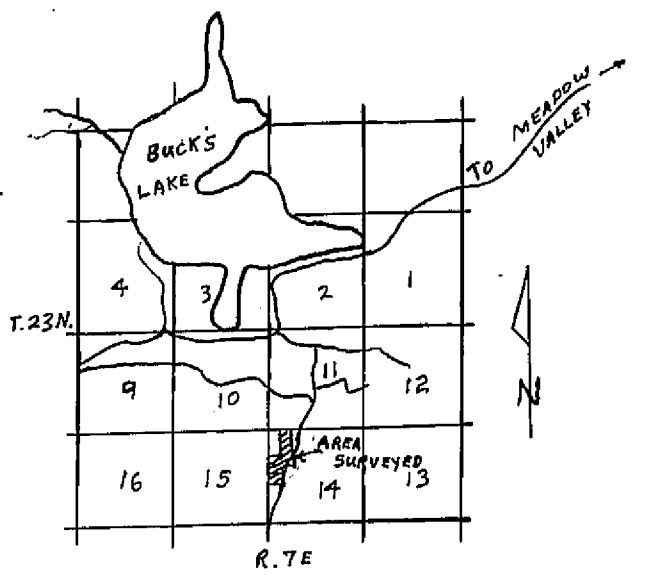
3 MAPS 42

### BUCK'S HIGHLANDS SUBDIVISION

#### COUNTY TAX COLLECTOR'S CERTIFICATE

I, TAX COLLECTOR OF THE COUNTY OF PLUMAS, STATE OF CALIFORNIA, DO HEREBY CERTIFY THAT THERE ARE NO TAX LIENS AGAINST THE PARCELS, AS SHOWN HEREON, FOR UNPAID COUNTY, MUNICIPAL, OR LOCAL TAXES OR SPECIAL ASSESSMENTS COLLECTED AS TAXES, EXCEPT TAXES OR ASSESSMENTS NOT YET PAYABLE. TAXES OR ASSESSMENTS WHICH ARE A LIEN BUT NOT YET PAYABLE, ARE ESTIMATED TO BE IN THE AMOUNT OF \$450.00

*Douglas S. Redstrake*  
DOUGLAS S. REDSTRAKE  
PLUMAS COUNTY TAX COLLECTOR



LOCATION MAP

#### SURVEYOR'S CERTIFICATE

THIS MAP WAS PREPARED BY ME OR UNDER MY DIRECTION AND IS BASED UPON A FIELD SURVEY IN CONFORMANCE WITH THE REQUIREMENTS OF THE SUBDIVISION MAP ACT AND LOCAL ORDINANCE. I HEREBY CERTIFY THAT IT CONFORMS TO THE APPROVED TENTATIVE MAP AND THE CONDITIONS OF APPROVAL THEREOF.

*Gerald C. Henderson*  
GERALD C. HENDERSON LS 3297

#### COUNTY SURVEYOR'S CERTIFICATE

THIS MAP CONFORMS WITH THE REQUIREMENTS OF THE SUBDIVISION MAP ACT AND LOCAL ORDINANCE.

DATED: 9-16-75

*Larry A. Fites*  
LARRY A. FITES RCE 13225  
COUNTY ENGINEER

#### RECORDER'S CERTIFICATE

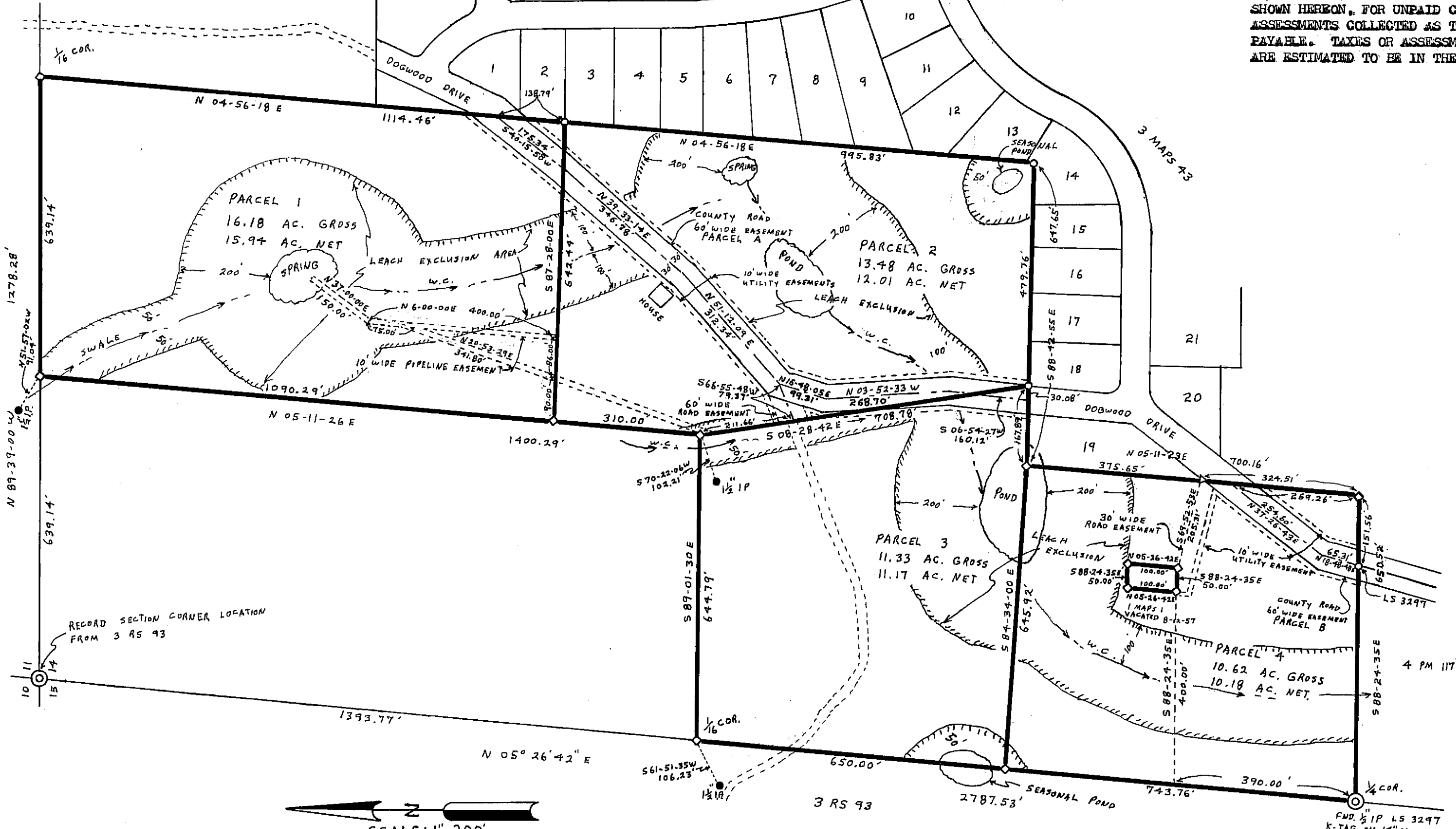
FILED THIS 16<sup>TH</sup> DAY OF SEPT, 1975, AT 3:25 P.M. IN BOOK 5 OF PARCEL MAPS AT PAGE 40, AT THE REQUEST OF GERALD C. HENDERSON.

FEE \$5.00

FILE NO. 1707

*Dorothy Neer Marley*  
DOROTHY NEER MARLEY  
COUNTY RECORDER

*Lana J. Brown*



#### NOTES

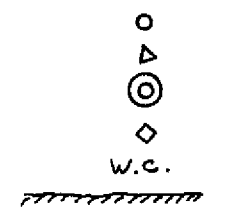
BASIS OF BEARING IS TAKEN FROM THOSE CERTAIN MAPS FILED IN BOOK 3 OF MAPS AT PAGES 42 & 43, PLUMAS COUNTY RECORDS.

SEPTIC TANK PERMITS FOR INSTALLATIONS ON PARCELS 2 AND 4 WILL REQUIRE 5-FOOT GROUNDWATER INVESTIGATION BETWEEN APRIL 1 AND JULY 1 AT EXACT PROPOSED LEACHFIELD SITE.

CERTIFICATE OF OWNERS CONSENT TO PREPARATION AND RECORDING OF THIS MAP IS ON FILE IN THE COUNTY ENGINEER'S OFFICE.

#### LEGEND

FOUND 3/4" IP AS IDENTIFIED HERON  
FOUND 1 1/2" IP TAGGED RCE 7294  
SECTION CORNER OR 1/4 CORNER  
SET 3/4" IP TAGGED LS 3297  
WATERCOURSE  
LEACH SETBACK LINE



## PARCEL MAP

OF A SUBDIVISION INTO FOUR PARTS  
FOR ED MOORE ETAL JULY 1975  
PORTION OF SECTION 14, T. 23N., R. 7E., M.D.M.  
PLUMAS COUNTY, CALIFORNIA

GERALD C. HENDERSON  
LICENSED LAND SURVEYOR  
P. O. BOX 13  
PORTOLA, CALIFORNIA

DEC OF ESMT/REST 246 OR 169  
GRANT OF ESMT 246 OR 170

5 PM 40