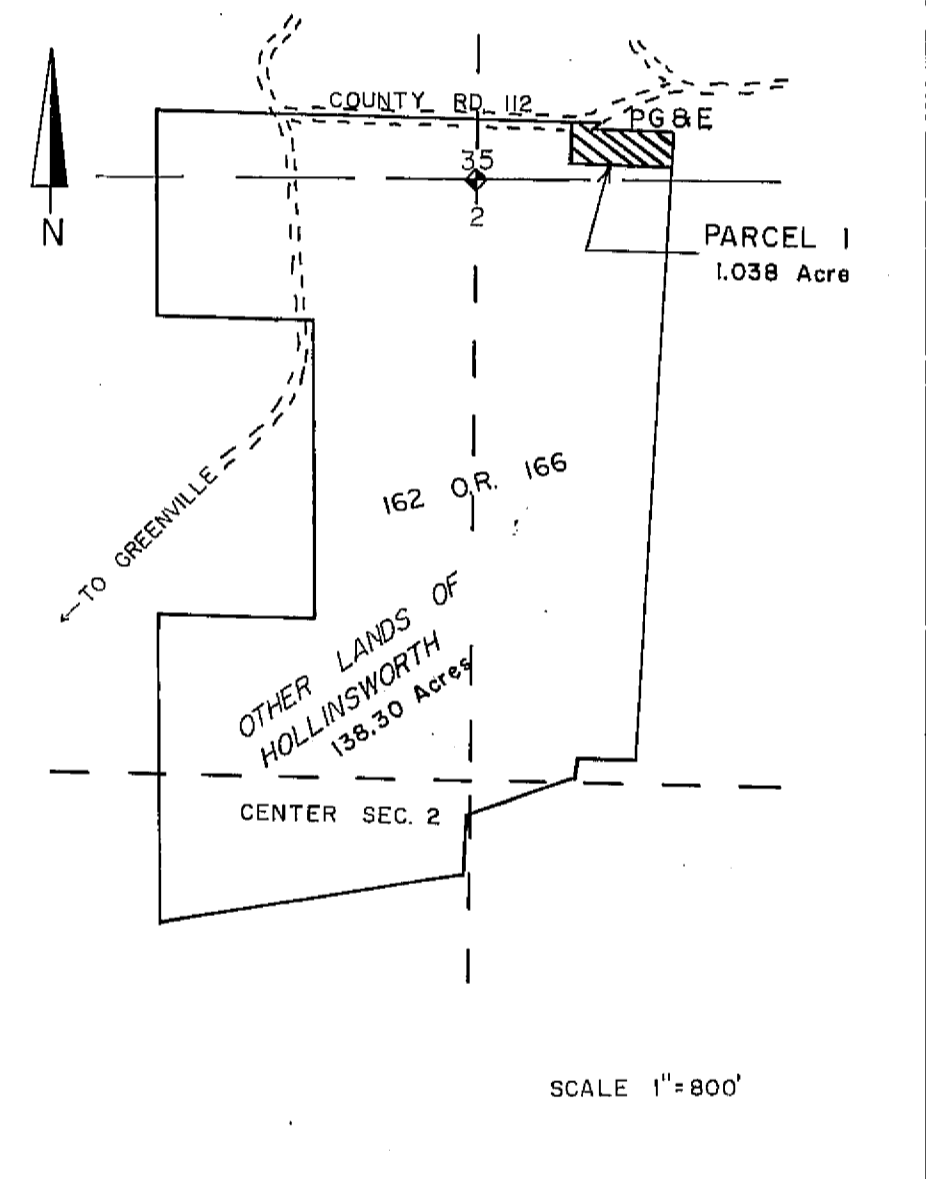
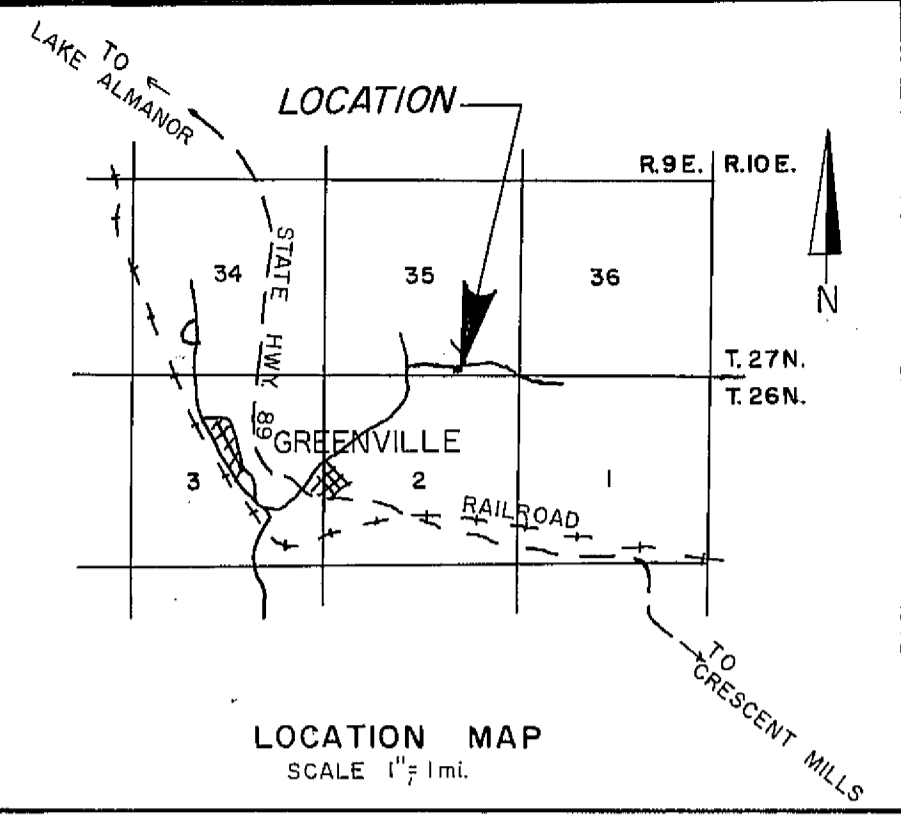
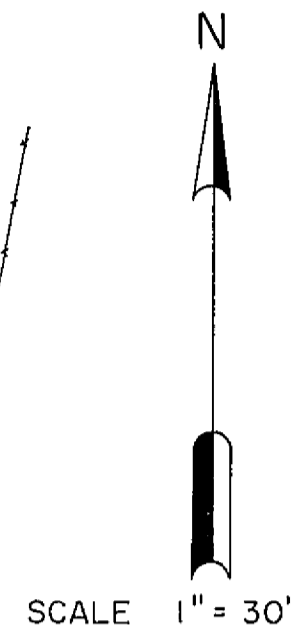
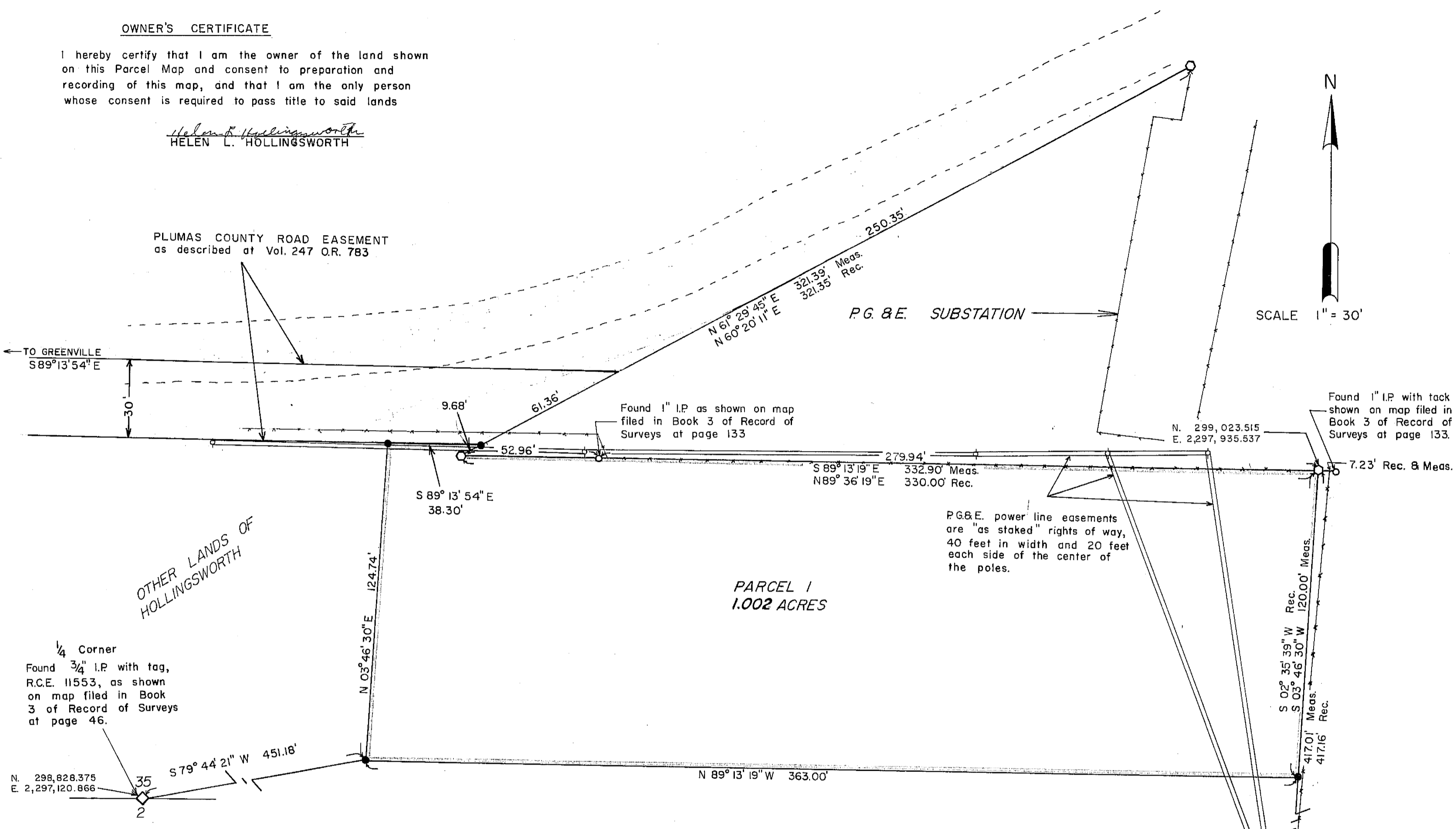


OWNER'S CERTIFICATE

I hereby certify that I am the owner of the land shown on this Parcel Map and consent to preparation and recording of this map, and that I am the only person whose consent is required to pass title to said lands

Helen L. Hollingsworth
HELEN L. HOLLINGSWORTH

PLUMAS COUNTY ROAD EASEMENT
as described at Vol. 247 Q.R. 783



1/4 Corner
Found 3/4" I.P. with tag,
R.C.E. 11553, as shown
on map filed in Book
3 of Record of Surveys
at page 46.
N. 298,828.375
E. 2,297,120.866
35
2

Found 1" I.P. as shown on map
filed in Book 3 of Record of
Surveys at page 133

Found 1" I.P. with tack as
shown on map filed in
Book 3 of Record of Surveys
at page 133.

PG&E. power line easements
are "as staked" rights of way,
40 feet in width and 20 feet
each side of the center of
the poles.

N. 299,023.515
E. 2,297,935.537
7.23' Rec. & Meas.
S 02° 35' 39" W 120.00' Meas.
S 03° 46' 30" W 417.01' Meas.
417.16' Rec.

COUNTY ENGINEER'S CERTIFICATE

This map conforms with the requirements of the Subdivision Map Act and local ordinance.
Dated: 11-12-75

Larry A. Fites
Plumas County Engineer
Larry A. Fites, R.C.E. 13225

RECORDER'S CERTIFICATE

Filed this 12th day of November, 1975, at 8:40 AM. in Book 5 of Parcel Maps at Page 52 at the request of Mack O. Scruggs

Dorothy Ann Markey
Plumas County Recorder

Fee \$5⁰⁰
File No. 2876

SURVEYOR'S CERTIFICATE

This map was prepared by me or under my direction and was compiled from a field survey in conformance with the Subdivision Map Act at the request of Helen L. Hollingsworth in March, 1975. I hereby certify that it conforms to the approved tentative map and the conditions of approval thereof; that all provisions of applicable state law and local ordinances have been complied with.

Mack O. Scruggs
Mack O. Scruggs L.S. 6657

COUNTY TAX COLLECTOR'S CERTIFICATE

I, the undersigned, County Tax Collector of the County of Plumas State of California, do hereby certify that there are no tax liens against Parcels 1, & 2 as shown hereon or unpaid state, county, municipal or local taxes, or special assessments collected as taxes, except taxes or assessments not yet payable. Taxes or assessments which are a lien but not yet payable, are estimated to be in the amount of NONE

Alougen S. Redataska
Plumas County Tax Collector

NOTE

Distances shown are ground distances. All bearings are grid, based on Calif. coordinate system zone I. Multiply distances by 0.9997999 to obtain grid distances.

Coordinates were established from the "Mission" Triangulation Station, N. 297,899.900 E. 2,309,224.900

LEGEND

- Found Monument as Described
- Set 1/2" I.P. Tagged L.S. 2357
- I.P. Iron Pipe
- Found Iron Pin with 2 1/2" dia. Brass Disk, Stamped L.S. 2692 as shown on map filed in Book 3 of Record of Surveys at page 133
- Edge of Pavement
- Fence
- Power Line

MACK O. SCRUGGS
L.S. 2357
438 MAIN STREET
GREENVILLE, CALIFORNIA

PARCEL MAP
OF
SUBDIVISION OF ONE PARCEL
FOR
HELEN L. HOLLINGSWORTH

WITHIN THE S.E. 1/4 OF SECTION 35,
T.27N., R.9E., M.D.B. & M.

PLUMAS COUNTY, CALIF.
MARCH 1975