

LEGEND

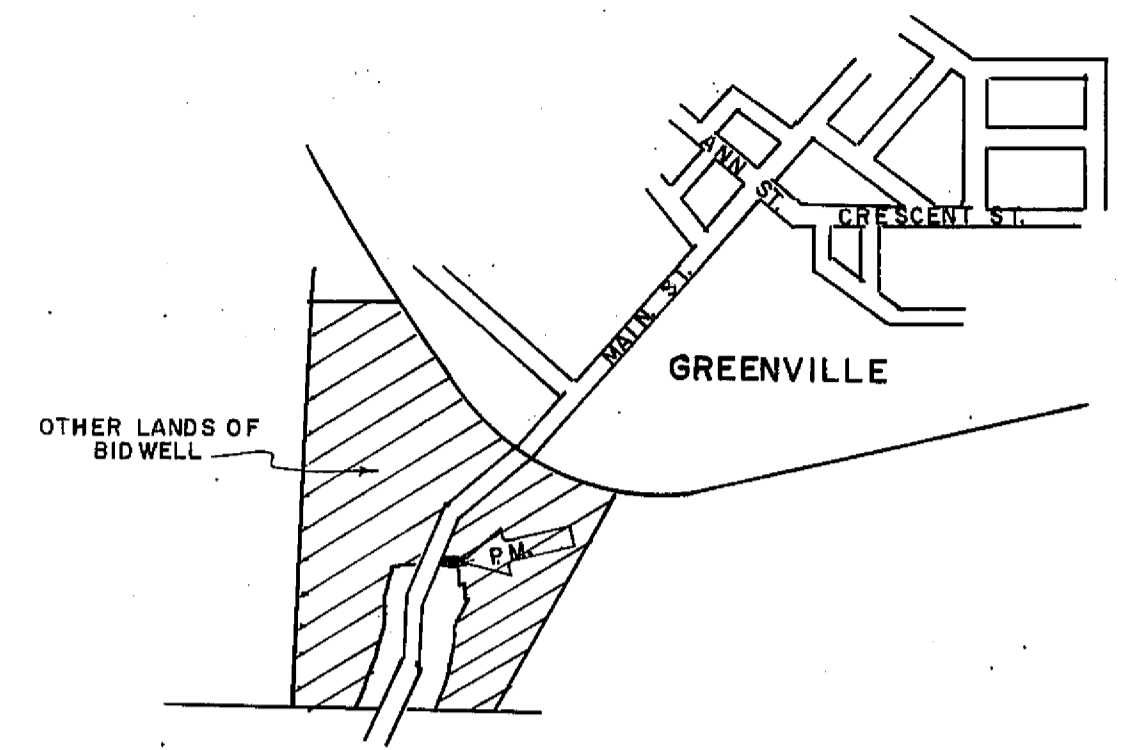
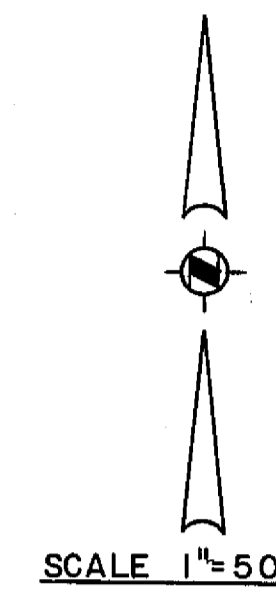
- Found monuments as noted
- Set 1/2" Steel Pin with plastic cap stamped "RCE 11173"
- P.M. Parcel Map
- Rec. Record (from deed, record map, etc.)
- Meas. Measured
- Bk. Book
- p. Page
- Ac. Acre
- O.R. Official Records, Plumas Co. records
- W.C. Witness Corner
- Exist. Existing
- Calc. Calculated

OTHER LANDS OF BIDWELL

NOTE A - 3/4" iron pipe recovered by County Engineer - not verified by County Engineer or engineer for this map.

NOTE B - Tie calculated from record data and measured upon insistence of County Engineer before filing map (not considered relevant by engineer).

$\Delta = 45^{\circ}54'50''$
 $R = 225'$
 $T = 95.31'$
 $L = 180.34'$
 $C = 175.52'$
 $N.42^{\circ}07'55''E.$



LOCATION MAP
NO SCALE

COUNTY TAX COLLECTOR'S CERTIFICATE

I, Tax Collector of the County of Plumas, State of California, do hereby certify that there are no tax liens against the Parcel as shown hereon for unpaid county, municipal, or local taxes or special assessments collected as taxes, except taxes or assessments not yet payable. Taxes or assessments which are a lien but not yet payable, are estimated to be in the amount of \$940.⁰⁰.

Douglas S. Redstreak
 Douglas S. Redstreak
 Plumas County Tax Collector

NOTE

Tentative Parcel Map approved by Plumas County Zoning Administrator Feb. 5, 1976.

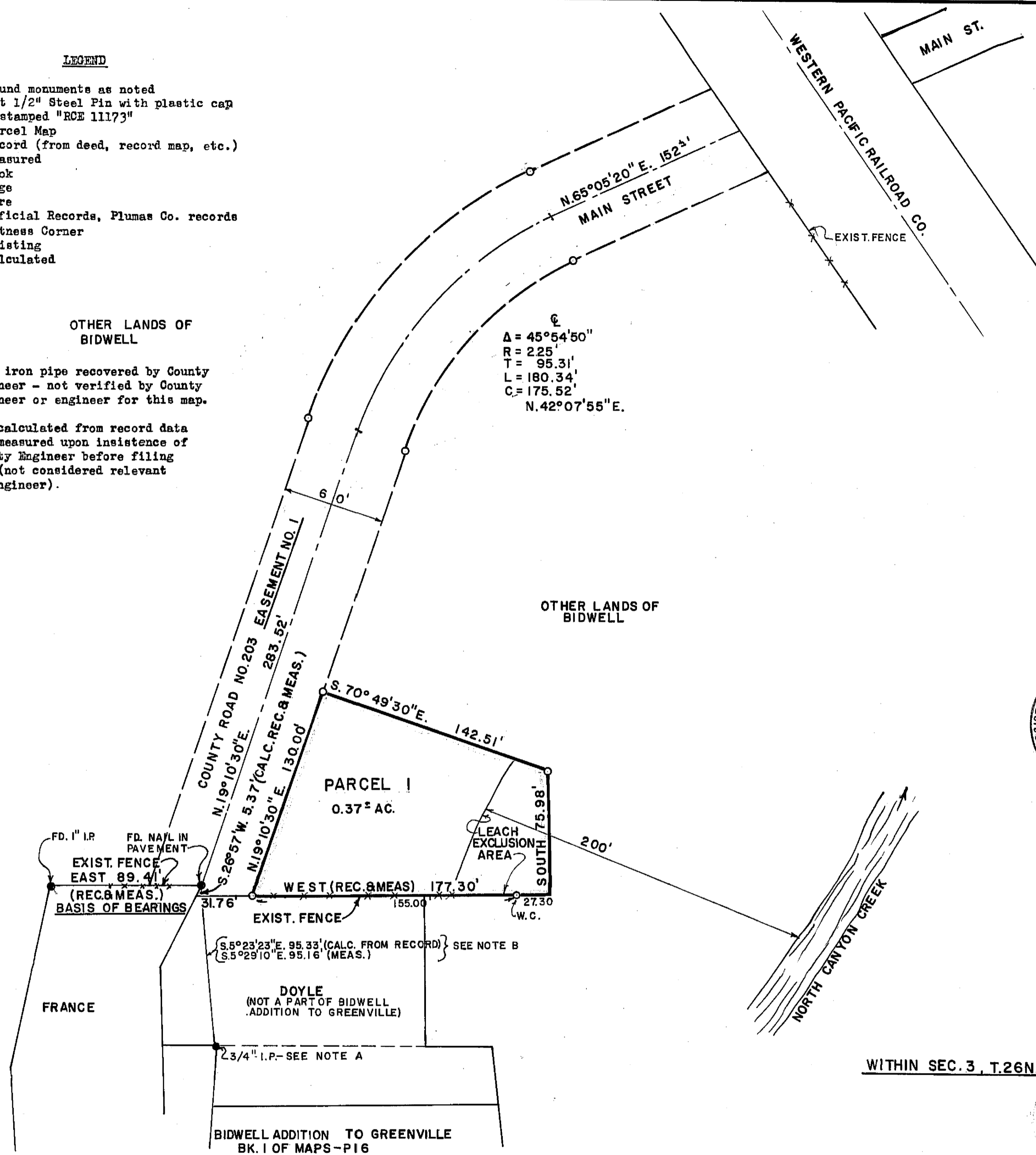
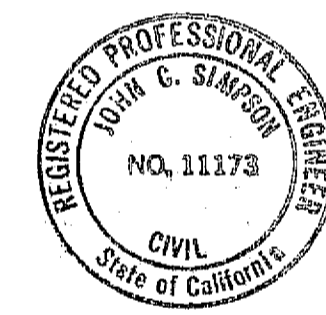
ENGINEER'S CERTIFICATE

This map was prepared by me or under my direction and is based upon a field survey in conformance with the requirements of the Subdivision Map Act at the request of Bruce Bidwell on February 25, 1976. I hereby certify that it conforms to the approved tentative map and the conditions of approval thereof.

John C. Simpson
 John C. Simpson
 R.C.E. 11173

NOTE
(OWNER'S CERTIFICATE)

Prior to the filing of this map a letter signed by the owners of the lands shown hereon, was filed with the County Engineer certifying that the signers were the owners of the lands shown on said map and that they consent to the preparation and filing of this map and that they were the only persons whose consent is required to pass title to said lands.



WITHIN SEC. 3, T.26N., R.9E. M.D.M.

RECORDER'S CERTIFICATE

Filed this 17th day of MARCH, 1976,
 at 3:00 P.M. in Book 5 of Parcel
 Maps at page 70 at the request of John C.
 Simpson.

Dorothy Neer Marley
 Dorothy Neer Marley
 Plumas County Recorder

COUNTY ENGINEER'S CERTIFICATE

This map conforms with the requirements of the Subdivision Map Act and the local ordinance.

Dated: 3-17-76
Larry A. Bates
 Larry A. Bates,
 R.C.E. 13225
 Plumas County Engineer

A diligent search of the area yielded several monuments on the east side of the County Road in Bidwell Addition, and substantiated the location of the monument at the northwest corner of Lot 1.
 JOHN C. SIMPSON, P.E.
 CIVIL ENGINEER
 P.O. BOX 719
 QUINCY, CALIFORNIA

PARCEL MAP
 OF
 SUBDIVISION INTO ONE PARCEL
 FOR
 BRUCE AND ADELAIDE BIDWELL
 WITHIN
 PORTION OF LOT 5 BLOCK 7
 OF THE TOWN OF GREENVILLE
 PLUMAS COUNTY, CALIFORNIA

Dec of Rest 'R-1A' 251 OR 772
 Grant of Easement 251 OR 771, 770