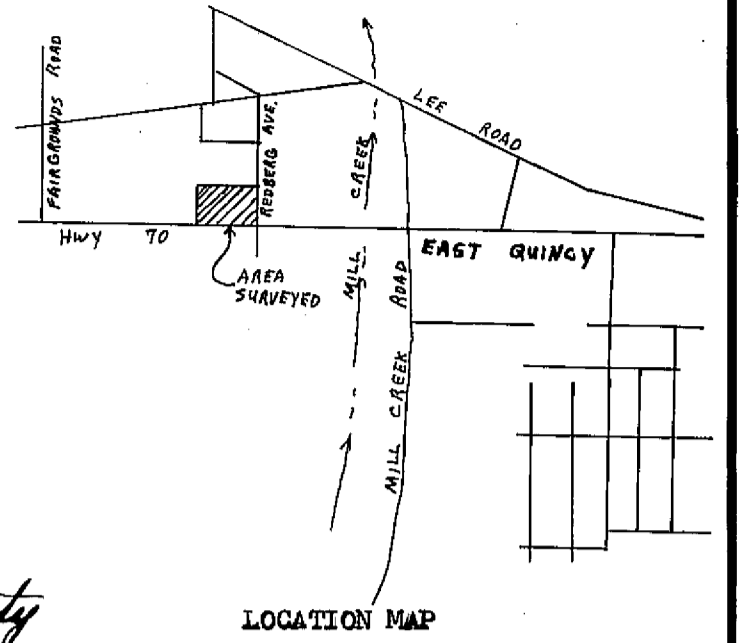


COUNTY TAX COLLECTOR'S CERTIFICATE

I, TAX COLLECTOR OF THE COUNTY OF PLUMAS, STATE OF CALIFORNIA, DO HEREBY CERTIFY THAT THERE ARE NO TAX LIENS AGAINST THE PARCELS, AS SHOWN HEREON, FOR UNPAID COUNTY, MUNICIPAL, OR LOCAL TAXES OR SPECIAL ASSESSMENTS COLLECTED AS TAXES, EXCEPT TAXES OR ASSESSMENTS NOT YET PAYABLE. TAXES OR ASSESSMENTS WHICH ARE A LIEN BUT NOT YET PAYABLE ARE ESTIMATED TO BE IN THE AMOUNT OF \$390.00.

Douglas S. Redstreak
DOUGLAS S. REDSTRAKE
PLUMAS COUNTY TAX COLLECTOR
By *Law Alexander* Deputy



SURVEYOR'S CERTIFICATE

THIS MAP WAS PREPARED BY ME OR UNDER MY DIRECTION AND IS BASED UPON A FIELD SURVEY IN CONFORMANCE WITH THE REQUIREMENTS OF THE SUBDIVISION MAP ACT AT THE REQUEST OF D. KUGLIN IN MARCH 1976. I HEREBY CERTIFY THAT IT CONFORMS TO THE APPROVED TENTATIVE MAP AND THE CONDITIONS OF APPROVAL THEREOF.

Gerald C. Henderson
GERALD C. HENDERSON LS 3297

COUNTY SURVEYOR'S CERTIFICATE

THIS MAP CONFORMS WITH THE REQUIREMENTS OF THE SUBDIVISION MAP ACT AND LOCAL ORDINANCE.

DATED: April 16, 1976

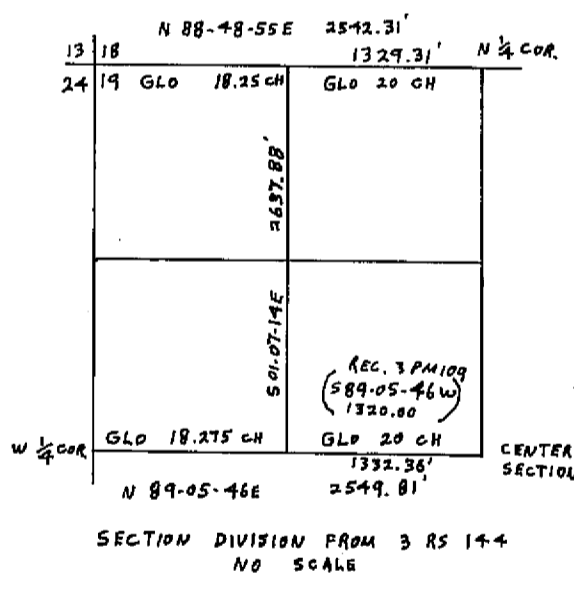
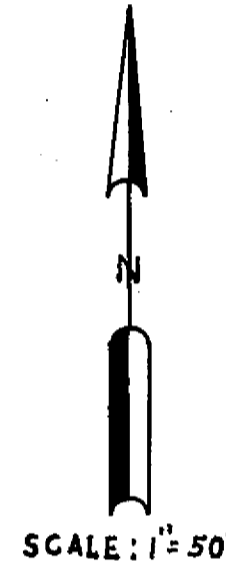
Larry A. Fites
LARRY A. FITES RCE 13225
COUNTY ENGINEER
By *Byron R. Brown*, Assistant

RECORDER'S CERTIFICATE

FILED THIS 16TH DAY OF April, 1976, AT 8:45 AM, IN BOOK 5 OF PARCEL MAPS AT PAGE 72, AT THE REQUEST OF GERALD C. HENDERSON.

FEE \$5.00
FILE NO. 5608

Dorothy Neer Marley
DOROTHY NEER MARLEY
COUNTY RECORDER
By *Lana S. Brown*



NOTES

BEARINGS AND DISTANCES ARE GRID, CALIF. COORDINATE SYSTEM ZONE 1, AS SHOWN ON BK. 3 OF PARCEL MAPS AT PAGE 96. TO OBTAIN GROUND DISTANCES ADD 0.015' PER 100'.

CERTIFICATE OF OWNER'S CONSENT TO PREPARATION AND RECORDING OF THIS MAP IS ON FILE IN THE COUNTY ENGINEER'S OFFICE.

CALIFORNIA COORDINATES ARE ESTABLISHED FROM CALIF. DIVISION OF HIGHWAYS "Q" STATIONS AND PROJECTED TO THE 1/4 CORNER, AS SHOWN HEREON, ON RECORD OF SURVEY BOOK 3 PAGE 144, PLUMAS COUNTY RECORDS.

LEGEND

FOUND REBAR WITH CAP STAMPED RCE 11173
RECORD 1/4 SEC. CORNER FROM 3 RS 144 & 3 PM 86
SET 1/2" IP TAGGED LS 3297

PARCEL MAP

OF A SUBDIVISION INTO TWO PARTS
FOR
D. KUGLIN & R. LOMAX ETAL MARCH 1976
PORTION SECTION 19, T. 24N., R. 10E., MDM
PLUMAS COUNTY, CALIFORNIA

GERALD C. HENDERSON
LICENSED LAND SURVEYOR
P. O. BOX 13
PORTOLA, CALIFORNIA