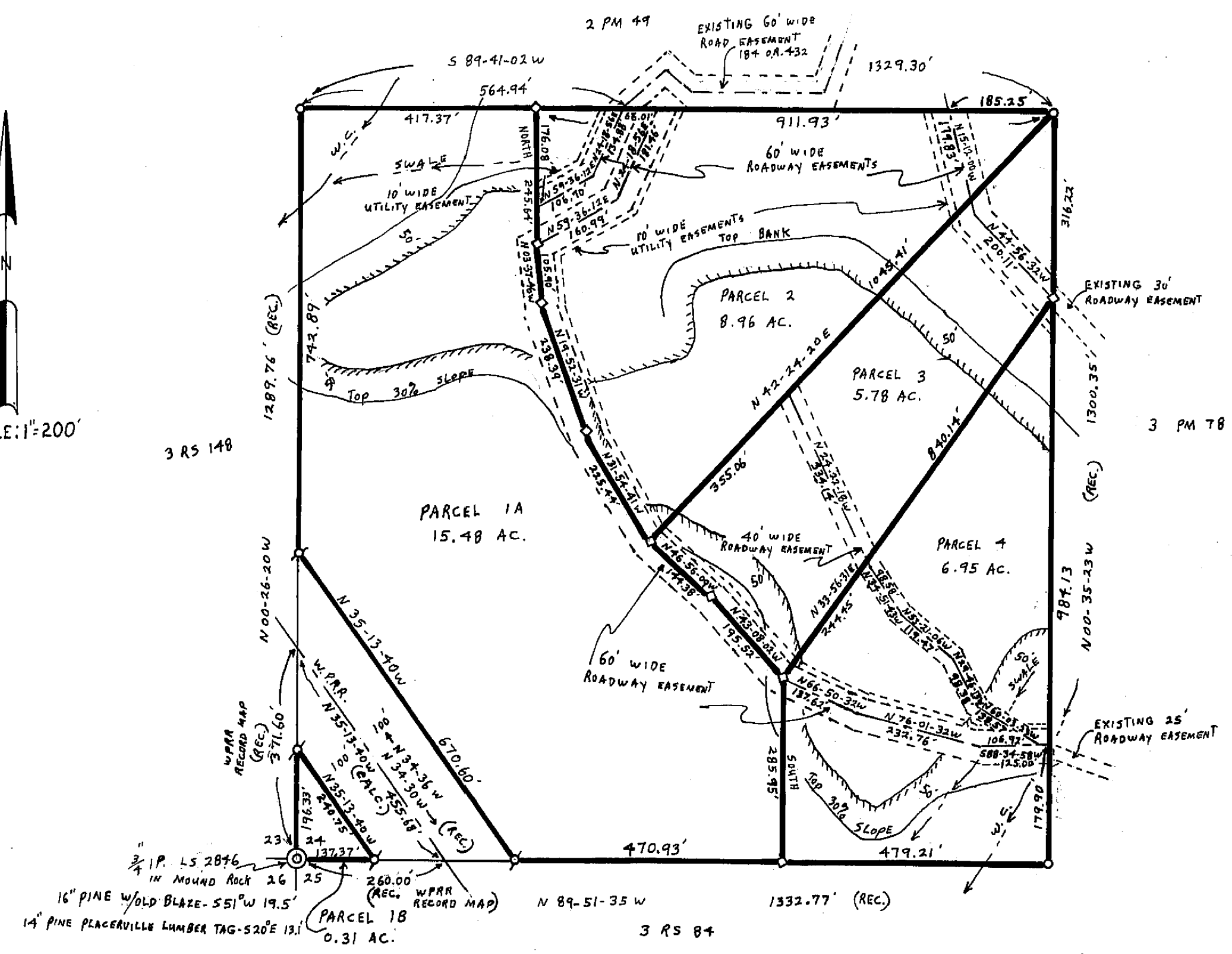
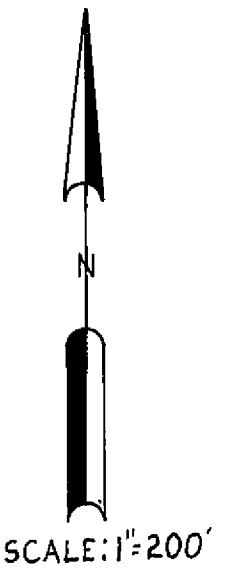
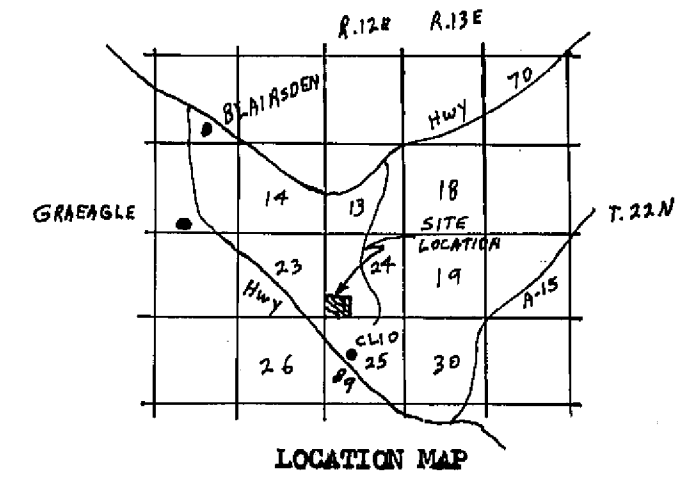


TAX COLLECTOR'S CERTIFICATE

I, THE UNDERSIGNED COUNTY TAX COLLECTOR OF THE COUNTY OF PLUMAS, STATE OF CALIFORNIA, DO HEREBY CERTIFY THAT THERE ARE NO TAX LIENS AGAINST PARCELS 1 THROUGH 4 INCLUSIVE AS SHOWN HEREON, OR UNPAID STATE, COUNTY, MUNICIPAL, OR LOCAL TAXES, OR SPECIAL ASSESSMENTS COLLECTED AS TAXES EXCEPT TAXES OR ASSESSMENTS NOT YET PAYABLE. TAXES OR ASSESSMENTS WHICH ARE A LIEN BUT NOT YET PAYABLE ARE ESTIMATED TO BE IN THE AMOUNT OF \$220.00

Douglas S. Redstrake
DOUGLAS S. REDSTRAKE



SURVEYOR'S CERTIFICATE

THIS MAP WAS PREPARED BY ME OR UNDER MY DIRECTION AND IS BASED UPON A FIELD SURVEY IN CONFORMANCE WITH THE REQUIREMENTS OF THE SUBDIVISION MAP ACT AT THE REQUEST OF L. LYDER IN JUNE 1974. I HEREBY CERTIFY THAT IT CONFORMS TO THE APPROVED TENTATIVE MAP AND THE CONDITIONS OF APPROVAL THEREOF, AND THAT ALL PROVISIONS OF APPLICABLE STATE LAW AND LOCAL ORDINANCES HAVE BEEN COMPLIED WITH.

Gerald C. Henderson
GERALD C. HENDERSON LS 3297

COUNTY SURVEYOR'S CERTIFICATE

THIS MAP HAS BEEN EXAMINED FOR CONFORMANCE WITH THE REQUIREMENTS OF SECTION 11575 OF THE SUBDIVISION MAP ACT THIS 14TH DAY OF MAY 1976.

Larry A. Fites
LARRY A. FITES ROE 13225 Assistant Co. Engr
by *Clifford K. Brown*

COUNTY RECORDER'S CERTIFICATE

FILED THIS 14TH DAY OF MAY 1976 AT 10:40 AM. IN BOOK 5 OF PARCEL MAPS AT PAGE 81 AT THE REQUEST OF GERALD C. HENDERSON.

FEE \$5.00
RECORDING NO. 6093

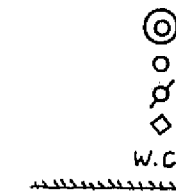
Dorothy Helen Marley
DOROTHY HELEN MARLEY
COUNTY RECORDER
by *Lana S. Brown*

NOTE

BASIS OF BEARING IS TAKEN FROM THAT CERTAIN MAP FILED IN BOOK 3 OF RECORD OF SURVEYS AT PAGE 84, PLUMAS COUNTY RECORDS.

LEGEND

FOUND SECTION CORNER DESCRIBED HEREON
FOUND 3/4" IP TAGGED LS 2846
COMPUTED CORNER LOCATION
SET 3/4" IP TAGGED LS 3297
WATERCOURSE
LEACH SETBACK LINE



PARCEL MAP

OF A SUBDIVISION INTO FOUR PARTS
FOR

L. LYDER JUNE 1974

PORTION OF SW 1/4 OF SW 1/4 OF SECTION 24, T. 22N., R. 12E., MM
PLUMAS COUNTY, CALIFORNIA

GERALD C. HENDERSON
LICENSED LAND SURVEYOR
P. O. BOX 13
PORTOLA, CALIFORNIA