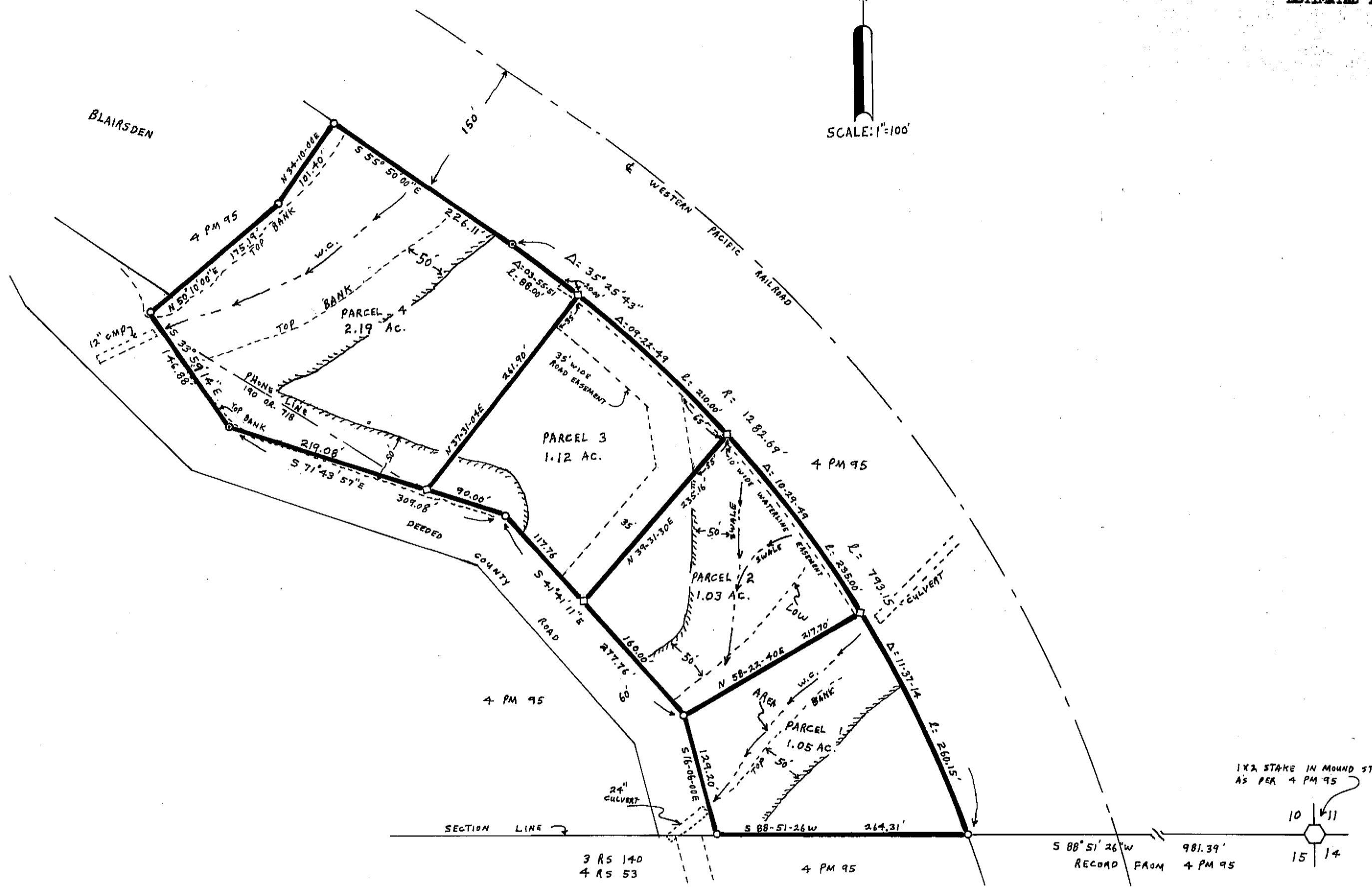
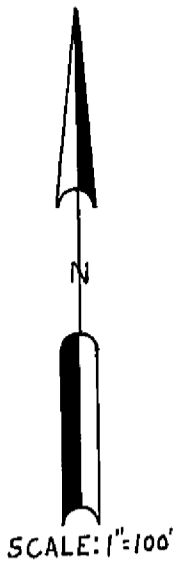
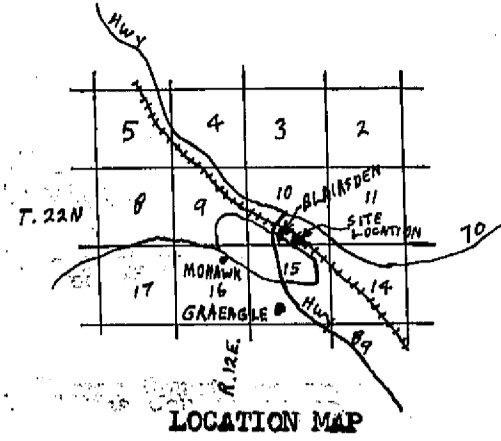


TAX COLLECTOR'S CERTIFICATE

I, THE UNDERSIGNED COUNTY TAX COLLECTOR OF THE COUNTY OF PLUMAS, STATE OF CALIFORNIA, DO HEREBY CERTIFY THAT THERE ARE NO TAX LIENS AGAINST PARCELS 1 THROUGH 4 INCLUSIVE AS SHOWN HEREON, OR UNPAID STATE, COUNTY, MUNICIPAL, OR LOCAL TAXES, OR SPECIAL ASSESSMENTS COLLECTED AS TAXES EXCEPT TAXES OR ASSESSMENTS NOT YET PAYABLE. TAXES OR ASSESSMENTS WHICH ARE A LIEN BUT NOT YET PAYABLE ARE ESTIMATED TO BE IN THE AMOUNT OF \$180.00

Douglas S. Redstreak
DOUGLAS S. REDSTRAKE
PLUMAS COUNTY TAX COLLECTOR



SURVEYOR'S CERTIFICATE

THIS MAP WAS PREPARED BY ME OR UNDER MY DIRECTION AND IS BASED UPON A FIELD SURVEY IN CONFORMANCE WITH THE REQUIREMENTS OF THE SUBDIVISION MAP ACT AT THE REQUEST OF A. DETTMAN IN NOVEMBER 1974. I HEREBY CERTIFY THAT IT CONFORMS TO THE APPROVED TENTATIVE MAP AND THE CONDITIONS OF APPROVAL THEREOF, AND THAT ALL PROVISIONS OF APPLICABLE STATE LAW AND LOCAL ORDINANCES HAVE BEEN COMPLIED WITH.

Gerald C. Henderson
GERALD C. HENDERSON LS 3297

COUNTY SURVEYOR'S CERTIFICATE

THIS MAP HAS BEEN EXAMINED THIS 17th DAY OF May 1976, FOR CONFORMANCE WITH THE REQUIREMENTS OF SECTION 11575 OF THE SUBDIVISION MAP ACT.

Larry A. Fites
LARRY A. FITES RCE 13225
PLUMAS COUNTY SURVEYOR

COUNTY RECORDER'S CERTIFICATE

FILED THIS 17th DAY OF May 1976 AT 10:00 AM, IN BOOK 5 OF PARCEL MAPS AT PAGE 84, AT THE REQUEST OF GERALD C. HENDERSON.

FEE \$5.00
RECORDING NO. 6121

Dorothy Ann Malynn
COUNTY RECORDER by Kathy Adlander

PARCEL MAP

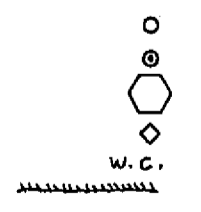
OF A SUBDIVISION INTO FOUR PARTS
FOR
A. DETTMAN NOVEMBER 1974
PORTION OF SECTION 10, T. 22N., R. 12E., MDM
PARCEL 12 IN BOOK 4 OF PARCEL MAPS AT PAGE 95
PLUMAS COUNTY, CALIF.

NOTE

BASIS OF BEARING IS TAKEN FROM THAT CERTAIN MAP FILED IN BOOK 4 OF PARCEL MAPS AT PAGE 95, PLUMAS COUNTY RECORDS.

LEGEND

- FOUND 1/2" IP TAGGED LS 3297
- COMPUTED CORNER LOCATION
- SECTION CORNER FROM RECORD
- SET 3/4" IP TAGGED LS 3297
- WATERCOURSE
- LEACH SETBACK LINE



GERALD C. HENDERSON
LICENSED LAND SURVEYOR
P. O. BOX 13
PORTOLA, CALIFORNIA

Dec of Easements 253 OR 610