

**ENGINEER'S CERTIFICATE**

THIS MAP WAS PREPARED BY ME OR UNDER MY DIRECTION AND IS BASED UPON A FIELD SURVEY IN CONFORMANCE WITH THE REQUIREMENTS OF THE SUBDIVISION MAP ACT AT THE REQUEST OF ALBION & GERALDINE F. HIXSON JOY ON APRIL 19, 1976. I HEREBY CERTIFY THAT IT CONFORMS TO THE APPROVED TENTATIVE MAP AND THE CONDITIONS OF APPROVAL THEREOF.

*Richard A. Lundy*  
 RICHARD A. LUNDY  
 R.C.E. 15265

**COUNTY ENGINEER'S CERTIFICATE**

THIS MAP CONFORMS WITH THE REQUIREMENTS OF THE SUBDIVISION MAP ACT AND LOCAL ORDINANCE.

DATED: JUNE 4, 1976 SIGNED: *Larry A. Fites*  
 LARRY A. FITES, R.C.E. 13225  
 COUNTY ENGINEER  
 by *Clifford R. Brown, Ass't*

**RECORDER'S CERTIFICATE**

FILED THIS 4<sup>th</sup> DAY OF June, 1976, AT 4:00 P.M. IN BOOK 5 OF Parcel Maps AT PAGE 88, AT THE REQUEST OF ALBION JOY.

FEE \$500  
 FILE NO. 6471  
 SIGNED *Dorothy Neer Marley*  
 DOROTHY NEER MARLEY by *Kathy Laplander*  
 COUNTY RECORDER

**COUNTY TAX COLLECTOR'S CERTIFICATE**

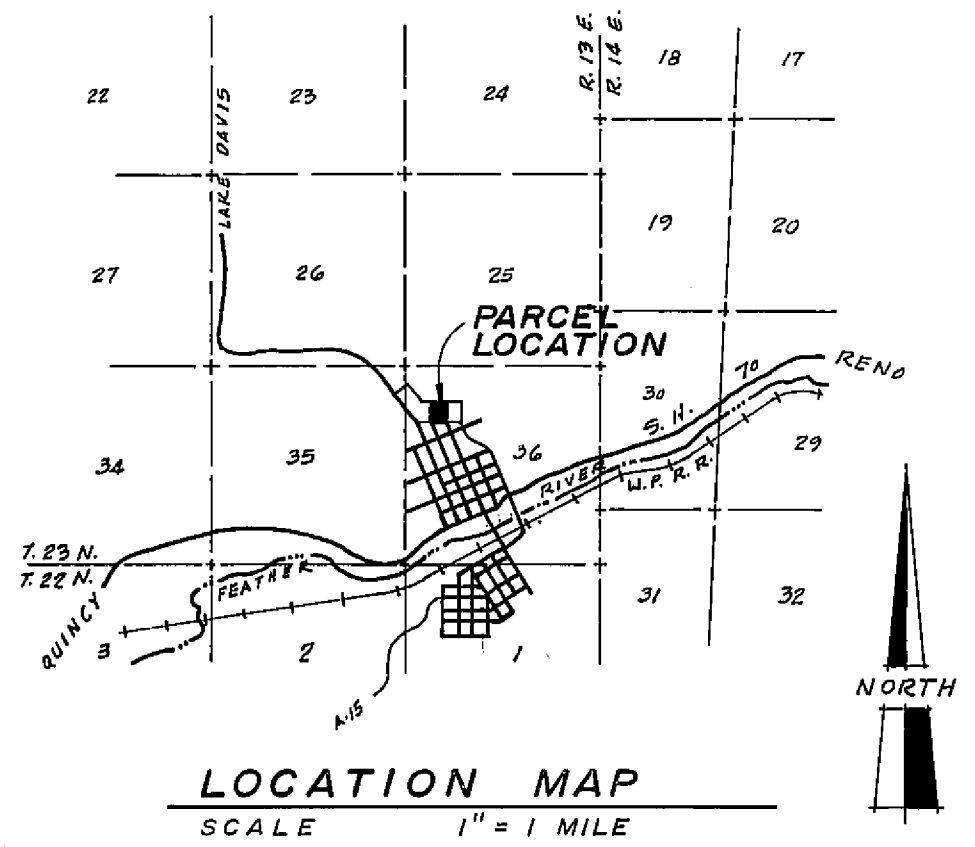
I, TAX COLLECTOR OF THE COUNTY OF PLUMAS, STATE OF CALIFORNIA, DO HEREBY CERTIFY THAT THERE ARE NO TAX LIENS AGAINST THE PARCELS, AS SHOWN HEREON, FOR UNPAID COUNTY, MUNICIPAL, OR LOCAL TAXES OR SPECIAL ASSESSMENTS COLLECTED AS TAXES, EXCEPT TAXES OR ASSESSMENTS NOT YET PAYABLE. TAXES OR ASSESSMENTS WHICH ARE A LIEN BUT NOT YET PAYABLE, ARE ESTIMATED TO BE IN THE AMOUNT OF \$ 9300.

*Douglas S. Redstreak*  
 DOUGLAS S. REDSTREAK  
 PLUMAS COUNTY TAX COLLECTOR

**CITY ENGINEER'S CERTIFICATE**

THIS MAP CONFORMS WITH THE REQUIREMENTS OF THE SUBDIVISION MAP ACT AND LOCAL ORDINANCE.

DATED: 5/11/76 SIGNED *Lloyd J. West*  
 LLOYD J. WEST  
 R.C.E. 17529



**MAP NOTES**

1. THE BASIS OF BEARING IS THE NORTH RIGHT OF WAY LINE OF JOY WAY, PORTOLA, CALIF., GIVEN AS EAST IN P.M. BOOK 2, PAGE 62, JAN. 1969, PLUMAS COUNTY RECORDS.

**MAP LEGEND**

- FOUND 3/4" I.R. TAGGED AS NOTED.
- SET 1/2" REBAR CAPPED R.C.E. 15265
- EASEMENT LINES AS DESCRIBED
- <sub>PP</sub> EXISTING POWER POLE
- POWER LINE
- WATER LINE

**PARCEL MAP**

A PORTION OF THE NW 1/4 OF THE NW 1/4, SECTION 36, T. 23 N., R. 13 E. M.D.M. PORTOLA, PLUMAS CO., CALIFORNIA  
 FOR  
 ALBION & GERALDINE F. JOY  
 LUNDY ENGINEERING  
 P.O. BOX 308  
 GRAEAGLE, CALIF.  
 R.C.E. 15265

APRIL, 1976

Dec of ESMT 254 OR 270