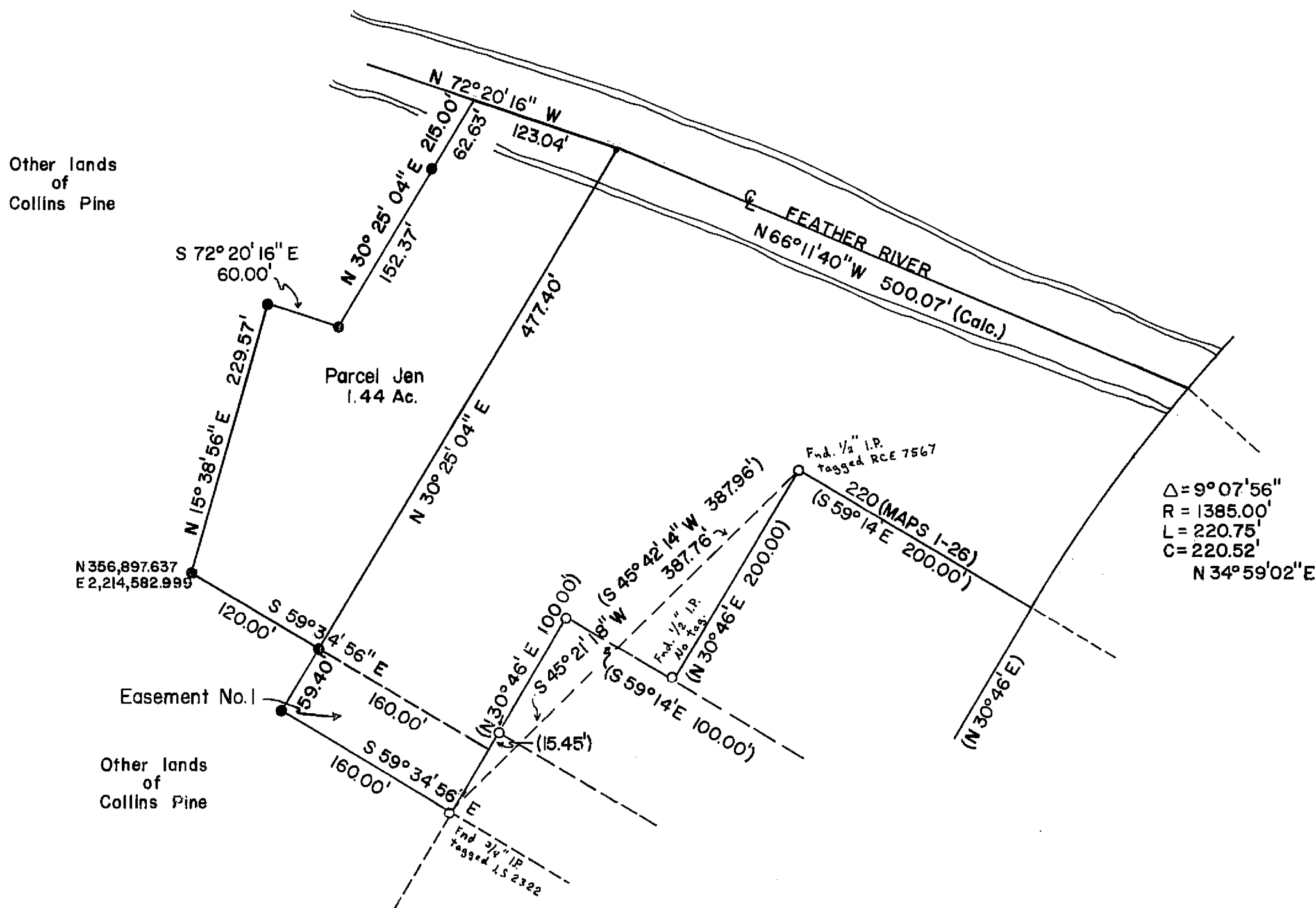
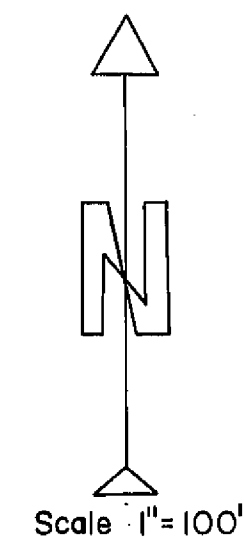


LOCATION MAP
NO SCALE



$\Delta = 9^{\circ}07'56''$
 $R = 1385.00'$
 $L = 220.75'$
 $C = 220.52'$
 $N 34^{\circ}59'02''E$



Notes:

All bearings shown are grid bearings based on California Coordinate System, Zone I and were derived from USC and GS Δ Stations "Chester" and "Chester Azimuth".

All distances shown are ground. Multiply distances by 0.9997326 to obtain grid distances.

Certificate of Owner's consent to preparation and recording of this map is on file at the County Engineer's Office.

For "Other lands of Collins Pine" see R/S 4-42.

Station	Coordinates
"Chester"	N 348,414.47 E 2,212,062.33
"Chester Azimuth"	N 349,145.67 E 2,211,143.84

Easement No. 1 to be dedicated for road and utilities easement.

SURVEYOR'S CERTIFICATE

This map was prepared by me or under my direction and was compiled from record data and is based upon a field survey in conformance with the requirements of the Subdivision Map Act. I hereby certify that it conforms to the approved tentative map and the conditions of approval thereof.

L. Brock
 L. Brock RCE 13528

TAX COLLECTOR'S CERTIFICATE

I, Tax Collector of the County of Plumas, State of California, do hereby certify that that there are no tax liens against the Parcels, as shown hereon, for unpaid county, municipal, or local taxes or special assessments collected as taxes, except taxes or assessments not yet payable. Taxes or assessments which are a lien but not yet payable are estimated to be in the amount of \$655.00.

Douglas S. Redstreak
 Douglas S. Redstreak
 Plumas County Tax Collector

COUNTY SURVEYOR'S CERTIFICATE

This map conforms with the requirements of the Subdivision Map Act and local ordinances

Larry A. Fites
 Larry A. Fites, RCE 13225
 by *Clifford R. Duran* Asst

RECORDER'S CERTIFICATE

Filed this 27th day of July, 1976, at 2:20 P.m. in book S of Records, at page 96.

File No. _____
 Fee None

Dorothy Neer Marley
 Dorothy Neer Marley by *Kathy Laplander*
 County Recorder

Legend:

- Set 1/2" IP tagged RCE 13528
- Found 3/4" IP tagged LS 3202 (except as noted)
- () Recorded at 5 PM 94.

PARCEL MAP

for
 PLUMAS COUNTY
 and
 COLLINS PINE CO.
 W1/2 OF SW1/4 SEC. 5, T28N R7E MDM
 PLUMAS COUNTY CALIFORNIA
 JULY 1976