

LOCATION MAP

COUNTY TAX COLLECTOR'S CERTIFICATE

I, TAX COLLECTOR OF THE COUNTY OF PLUMAS, STATE OF CALIFORNIA, DO HEREBY CERTIFY THAT THERE ARE NO TAX LIENS AGAINST THE PARCELS, AS SHOWN HEREON, FOR UNPAID COUNTY, MUNICIPAL, OR LOCAL TAXES OR SPECIAL ASSESSMENTS COLLECTED AS TAXES, EXCEPT TAXES OR ASSESSMENTS NOT YET PAYABLE. TAXES OR ASSESSMENTS WHICH ARE A LIEN BUT NOT YET PAYABLE ARE ESTIMATED TO BE IN THE AMOUNT OF NONE

Douglas S. Redstreak
DOUGLAS S. REDSTRAKE
PLUMAS COUNTY TAX COLLECTOR

SURVEYOR'S CERTIFICATE

THIS MAP WAS PREPARED BY ME OR UNDER MY DIRECTION AND IS BASED UPON A FIELD SURVEY IN CONFORMANCE WITH THE REQUIREMENTS OF THE SUBDIVISION MAP ACT AT THE REQUEST OF S. J. MEJIA IN SEPTEMBER 1976. I HEREBY STATE THAT THE PARCEL MAP PROCEDURES OF THE LOCAL AGENCY HAVE BEEN COMPLIED WITH AND THAT THIS PARCEL MAP CONFORMS TO THE APPROVED TENTATIVE MAP AND THE CONDITIONS OF APPROVAL THEREOF, WHICH WERE REQUIRED TO BE FULFILLED PRIOR TO THE FILING OF THE PARCEL MAP.

Gerald G. Henderson
GERALD G. HENDERSON LS 3297

COUNTY SURVEYOR'S CERTIFICATE

THIS MAP CONFORMS WITH THE REQUIREMENTS OF THE SUBDIVISION MAP ACT AND LOCAL ORDINANCE.

DATED: 11-24-76

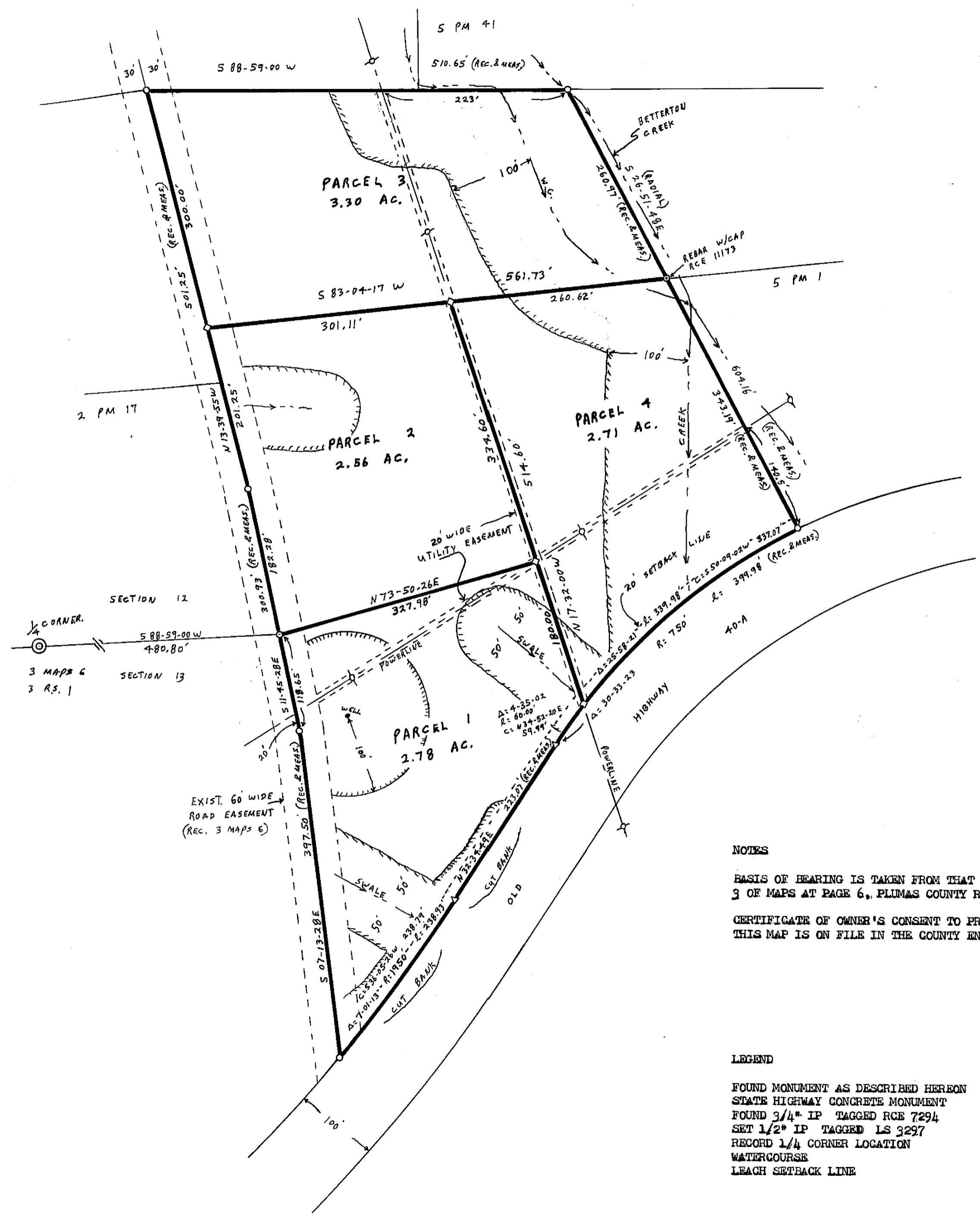
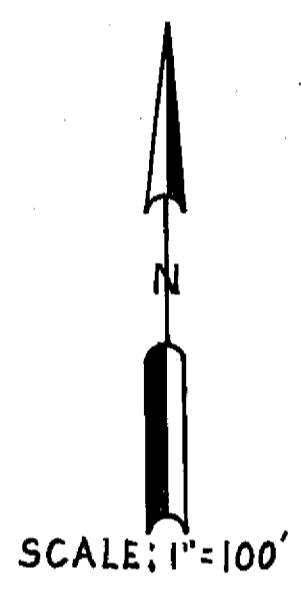
Larry A. Fites
LARRY A. FITES RCE 13225
COUNTY ENGINEER

RECORDER'S CERTIFICATE

FILED THIS 12TH DAY OF JANUARY, 1977, AT 3:30 P.M. IN BOOK 5 OF PARCEL MAPS AT PAGE 123, AT THE REQUEST OF GERALD G. HENDERSON.

FEE \$5.00
FILE NO. 5278

Raynelle Slaten
RAYNELLE SLATEN
COUNTY RECORDER
By: *Mildred Carter*
Deputy

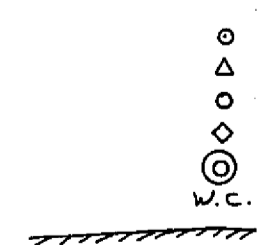


NOTES

BASIS OF BEARING IS TAKEN FROM THAT CERTAIN MAP FILED IN BOOK 3 OF MAPS AT PAGE 6, PLUMAS COUNTY RECORDS.
CERTIFICATE OF OWNER'S CONSENT TO PREPARATION AND RECORDING OF THIS MAP IS ON FILE IN THE COUNTY ENGINEER'S OFFICE.

LEGEND

FOUND MONUMENT AS DESCRIBED HEREON
STATE HIGHWAY CONCRETE MONUMENT
FOUND 3/4" IP TAGGED RCE 7294
SET 1/2" IP TAGGED LS 3297
RECORD 1/4 CORNER LOCATION
WATERCOURSE
LEACH SETBACK LINE



PARCEL MAP

OF A SUBDIVISION INTO FOUR PARTS

FOR
S. J. & FLORENCE MEJIA SEPTEMBER 1976
NAOMI & HILDUR ANDERSON
PORTION OF SECTIONS 12 & 13, T. 22N., R. 12E., MD.
LOTS 6 & 7 OF MOHAWK VISTA SUBDIVISION, 3 MAPS 5
PLUMAS COUNTY, CALIFORNIA

GERALD G. HENDERSON
LICENSED LAND SURVEYOR
P. O. BOX 13
PORTOLA, CALIFORNIA