

COUNTY TAX COLLECTOR'S CERTIFICATE

I, TAX COLLECTOR OF THE COUNTY OF PLUMAS, STATE OF CALIFORNIA, DO HEREBY CERTIFY THAT THERE ARE NO TAX LIENS AGAINST THE PARCELS, AS SHOWN HEREON, FOR UNPAID COUNTY, MUNICIPAL, OR LOCAL TAXES OR SPECIAL ASSESSMENTS COLLECTED AS TAXES, EXCEPT TAXES OR ASSESSMENTS NOT YET PAYABLE. TAXES OR ASSESSMENTS WHICH ARE A LIEN BUT NOT YET PAYABLE ARE ESTIMATED TO BE IN THE AMOUNT OF NONE

*Douglas S. Redstreak*  
DOUGLAS S. REDSTREAK  
PLUMAS COUNTY TAX COLLECTOR

SURVEYOR'S CERTIFICATE

THIS MAP WAS PREPARED BY ME OR UNDER MY DIRECTION AND IS BASED UPON A FIELD SURVEY IN CONFORMANCE WITH THE REQUIREMENTS OF THE SUBDIVISION MAP ACT AT THE REQUEST OF G. BACON IN JULY 1976. I HEREBY STATE THAT THE PARCEL MAP PROCEDURES OF THE LOCAL AGENCY HAVE BEEN COMPLIED WITH AND THAT THIS PARCEL MAP CONFORMS TO THE APPROVED TENTATIVE MAP AND THE CONDITIONS OF APPROVAL THEREOF, WHICH WERE REQUIRED TO BE FULFILLED PRIOR TO THE FILING OF THE PARCEL MAP.

*Gerald C. Henderson*  
GERALD C. HENDERSON LS 3297

COUNTY SURVEYOR'S CERTIFICATE

THIS MAP CONFORMS WITH THE REQUIREMENTS OF THE SUBDIVISION MAP ACT AND LOCAL ORDINANCE.

DATED: 11-24-76

*Larry A. Fites*  
LARRY A. FITES RCE 13225  
COUNTY ENGINEER

RECORDER'S CERTIFICATE

FILED THIS 25<sup>TH</sup> DAY OF February, 1977, AT 1:15 P.M. IN BOOK S OF PARCEL MAPS AT PAGE 130, AT THE REQUEST OF GERALD C. HENDERSON.

FEE \$5.00

FILE NO. 6834

*Royce Slaton*  
COUNTY RECORDER *By: Gordon M. Doll*

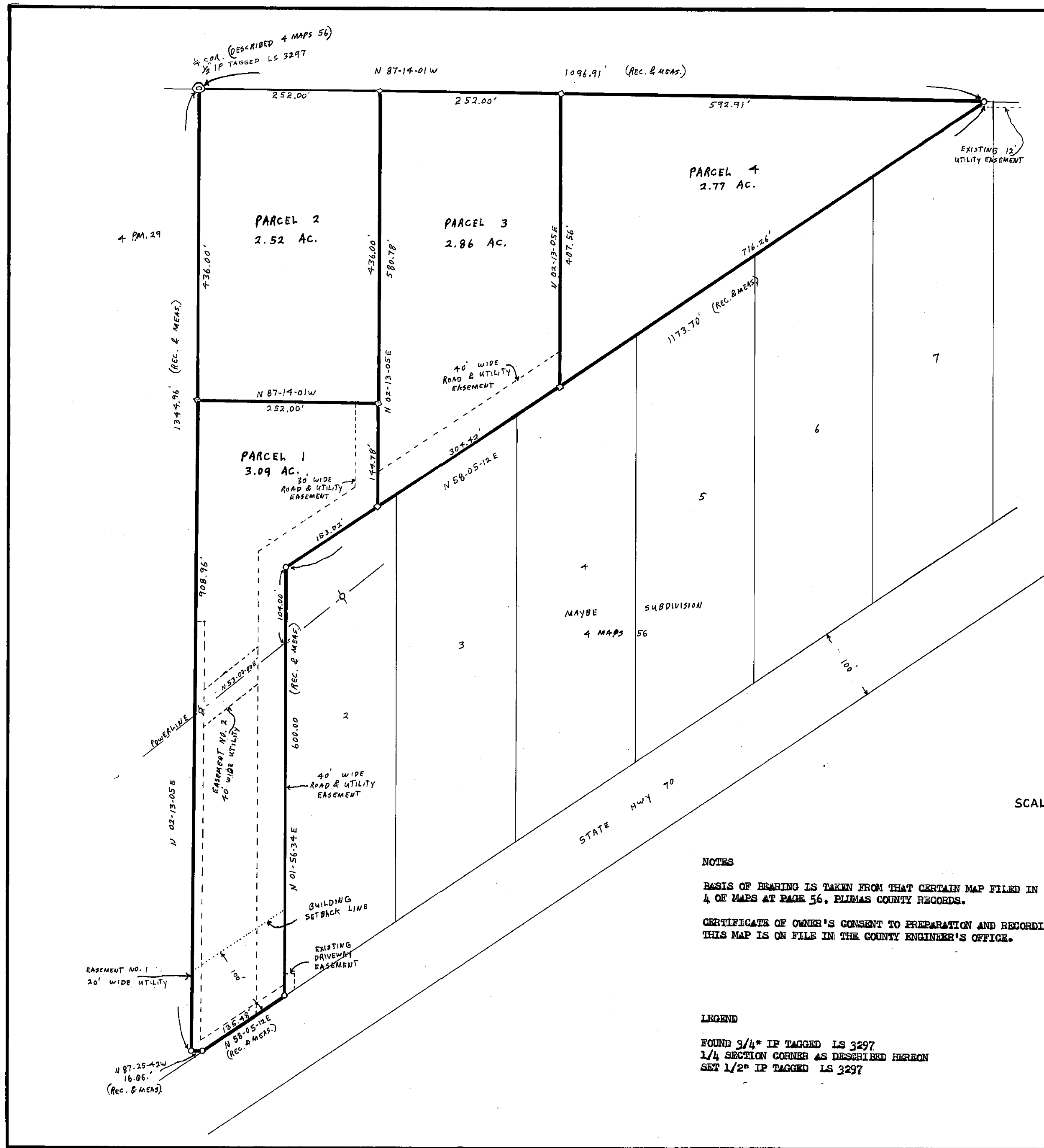
PARCEL MAP

OF A SUBDIVISION INTO FOUR PARTS  
FOR  
CURTIS & FAY BACON JULY 1976

PORTION OF SECTION 8, T. 22N., R. 13E., MDM  
LOT 1 OF MAYBE SUBDIVISION 4 MAPS 56

PLUMAS COUNTY, CALIFORNIA

GERALD C. HENDERSON  
LICENSED LAND SURVEYOR  
P. O. BOX 13  
PORTOLA, CALIFORNIA



NOTES

BASIS OF BEARING IS TAKEN FROM THAT CERTAIN MAP FILED IN BOOK 4 OF MAPS AT PAGE 56, PLUMAS COUNTY RECORDS.

CERTIFICATE OF OWNER'S CONSENT TO PREPARATION AND RECORDING OF THIS MAP IS ON FILE IN THE COUNTY ENGINEER'S OFFICE.

LEGEND

FOUND 3/4" IP TAGGED LS 3297  
1/4 SECTION CORNER AS DESCRIBED HEREON  
SET 1/2" IP TAGGED LS 3297

Dec of ESMTS 285 or 718