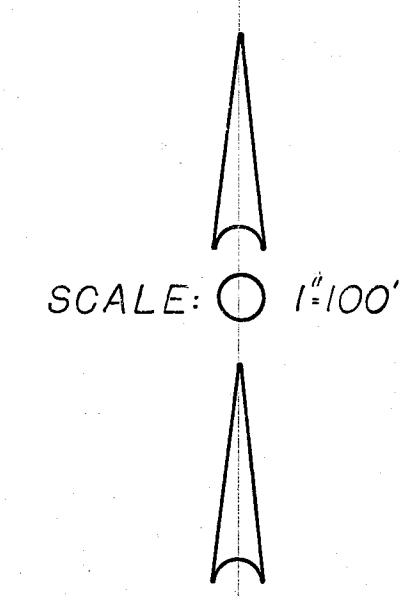
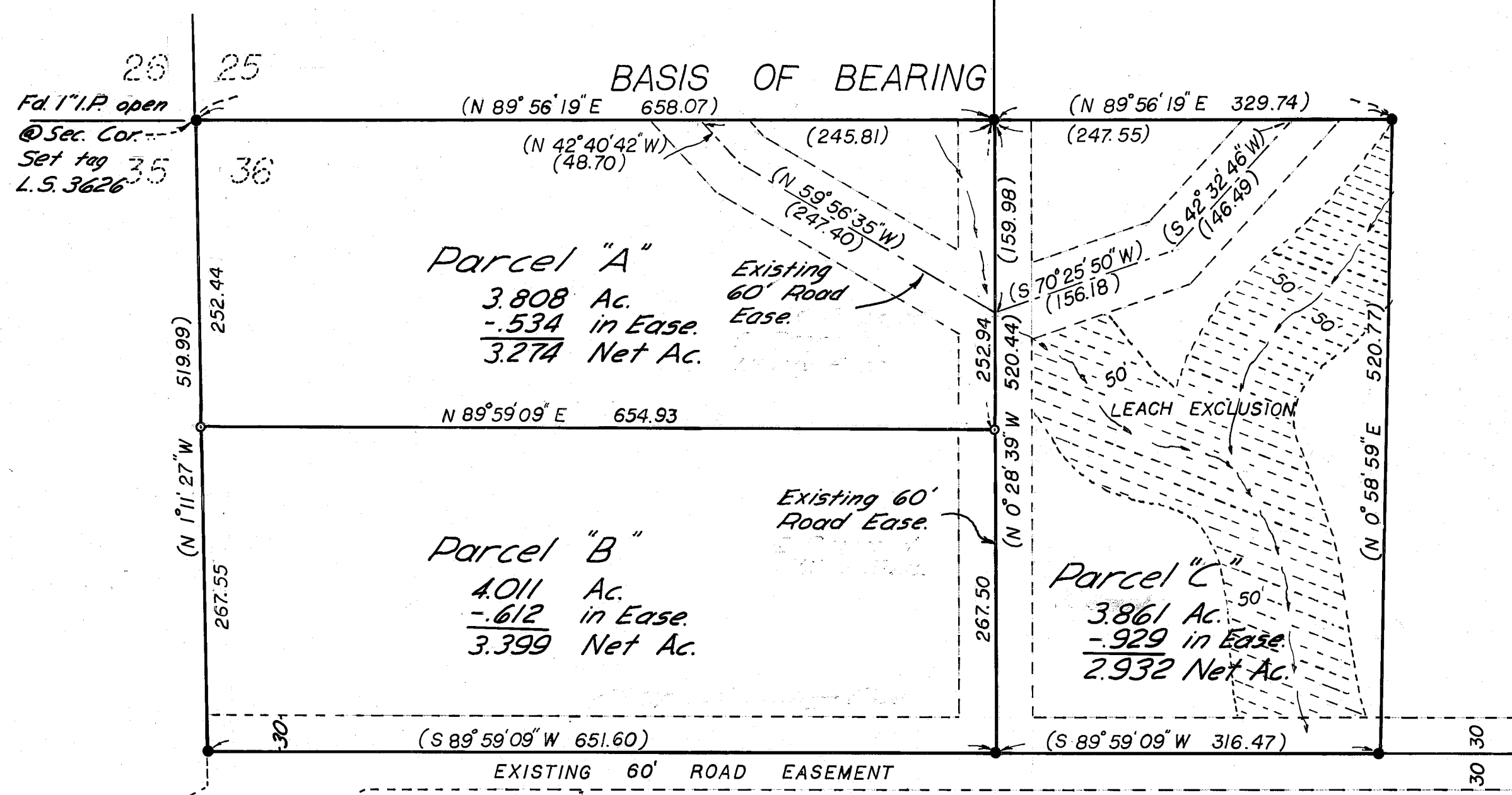


LOCATION MAP
SCALE: 1" = 1 MILE



County Tax Collector's Certificate

I, Lois Alexander, Tax Collector of the County of Plumas, State of California, do hereby certify that there are no tax liens against the parcels, as shown hereon, for unpaid county, municipal, or local taxes or special assessments collected as taxes, except taxes or assessments not yet payable. Taxes or assessments which are a lien but not yet payable are estimated in the amount of \$165.⁰⁰.

5-4-79
Dated

Lois Alexander
Lois Alexander
Plumas County Tax Collector

Certificate of owner's consent to the preparation and recording of this map is on file in the County Engineer's office. Dated March 21 1979.

Notes

1. Septic tank installation permit shall require a 5' ground water investigation on Parcel C, between April 1st and July 1st, at the exact leachfield site.
2. Roads shown hereon are private easements that are established by a declaration filed concurrent with or prior to recordation of this map. Such easements may not become fully effective unless and until reservations and grants are included in the respective deeds.

Legend

- (---) indicates record data per 2 P.M. 9.
- indicates Fd. 3/4" I.P. R.C.E. T294 unless otherwise indicated.
- indicates Set 1" I.P. L.S. 3626
- indicates natural drainage channel

Basis of Bearings is the north line of Parcel 1 shown as N 89° 56' 19" E on map filed in Book 2 of Parcel Maps at Page 9.

PARCEL MAP
OF
SUBDIVISION OF THREE PARCELS
FOR
RUTH HESS
WITHIN
THE NW 1/4 OF THE NW 1/4 OF SEC 36, T.23 N,
R.13 E, M.D.M.
PLUMAS COUNTY, CALIF.

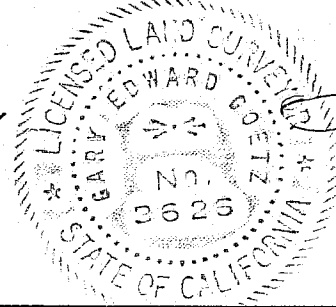
SURVEYOR'S CERTIFICATE

This map was prepared by me or under my direction and was compiled from record data and field survey in conformance with the requirements of the Subdivision Map Act and local ordinance at the request of RUTH HESS on September, 1978. I hereby state that this parcel map substantially conforms to the approved or conditionally approved tentative map.

Gary E. Goetz
L.S. 3626

COUNTY SURVEYOR'S CERTIFICATE

This map conforms with the requirements of the Subdivision Map Act and local ordinance.



Dated May 4, 1979
Lawrence J. Brock
Lawrence J. Brock RCE 13528
Plumas County Surveyor

COUNTY RECORDER'S CERTIFICATE

Filed this 7th day of May, 1979
at 4:27 m. in Book 6 of Parcel Maps at page 139
at the request of the County Engineer.

Raynelle Staten County Recorder
By *Shanille Anderson* Deputy
FILE No. 8521 Fee \$5.00

GARY GOETZ - LAND SURVEYOR
320 CHURCH ST. RM. 2, SALINAS, CALIF.

SCALE: 1" = 100'

SEPTEMBER 1978