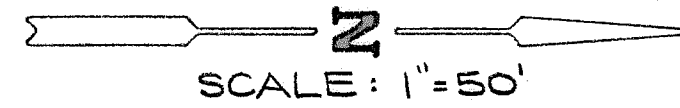


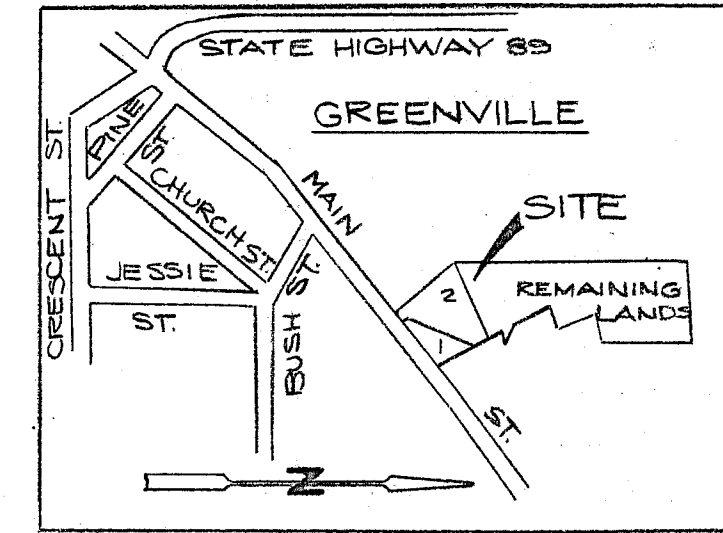
BASIS OF BEARING

LINE BETWEEN THE WEST 1/4 CORNER OF SECTION 2 AND THE FOUND PIPE (5528.26 N, 5276.05 E) ON THE NORTH SIDE OF MAIN STREET, PER BOOK 3 OF RECORD OF SURVEYS, PAGES 135-136, TAKEN AS... N 27° 35' 24" E PER COORDINATES AS SHOWN ON R.O.S. BK. 3 PG. 136



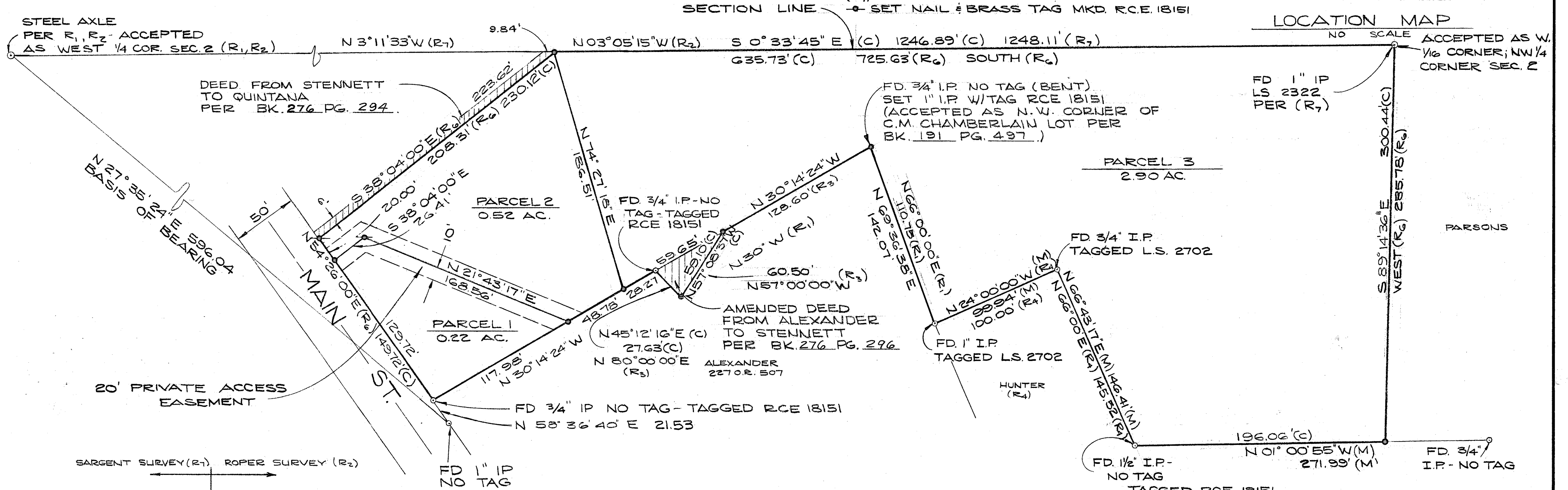
LEGEND

- MONUMENT AS DESCRIBED
- SET 1" I.P. W/ PLASTIC CAP MKD R.C.E. 18151
- (R₁) RECORD PER BK. 3 R.O.S. PG. 135-136
- (R₂) RECORD PER BK. 3 R.O.S. PG. 46
- (R₃) RECORD PER BK. 228 O.R. PG. 779
- (R₄) RECORD PER BK. 98 O.R. PG. 336
- (R₅) RECORD PER BK. 191 O.R. PG. 497
- (R₆) RECORD PER BK. 228 O.R. PG. 777, 778
- (M) MEASURED
- (C) CALCULATED AND MEASURED
- (R₇) RECORD PER BK. 1 R.O.S. PG. 97
- ⊕ SET NAIL & BRASS TAG MKD R.C.E. 18151



LOCATION MAP

NO SCALE ACCEPTED AS W. 1/6 CORNER; NW 1/4 CORNER SEC. 2



SARGENT SURVEY (R ₁)		ROPER SURVEY (R ₂)	
1/4 COR.	N 88° 49' 35" E	SEC. 34	SEC. 35
1314.82	1314.82	2640.51	2640.51
(38.90 AC)	(38.70 AC)	(77.90 AC)	(77.90 AC)
37.87 AC	37.23 AC	73.52 AC	73.52 AC
1246.73	1224.87	1204.42	1201.18
1356.29	1356.28	2616.49	2616.49
589° 42' 50" E	589° 42' 50" E	589° 14' 36" E	589° 14' 36" E
(40 AC)	(40 AC)	(80 AC)	(80 AC)
40.15 AC	39.69 AC	75.50 AC	75.50 AC
1278.70	1262.70	1248.11	1250.96
1398.92	1398.92	2588.50	2588.50
N 89° 41' 33" E	N 89° 41' 33" E	1/4 COR.	1/4 COR.

NOTE: SEE PAGE 1 FOR RESOLUTION OF SURVEY

NOTE: SARGENT & ROOPER BEARINGS HAVE BEEN ROTATED TO COINCIDE WITH BASIS OF BEARING FOR THIS SURVEY.

LEGEND:

- (77.90 AC) = AREA AS SHOWN ON TOWNSHIP PLATS.
- 73.50 AC = AREA AS CALCULATED BY PRORATING MEASURED DISTANCES TO ORIGINAL LOT AREAS 4.62% REDUCTION
- * ROOPER MEASUREMENT IS DIVIDED IN PROPORTION TO SARGENT BREAKDOWN OF N.E. 1/4 SEC. 3.

PARCEL MAP

A PORTION OF SECTION 200, T. 26N. R. 9 E., M.D.B. & M. GREENVILLE, PLUMAS COUNTY CALIFORNIA 228 O.R. 777

FOR DANIEL TYLER STENNETT AND LORENE STENNETT

ROLLS, ANDERSON & ROLLS CIVIL ENGINEERS CHICO, CALIFORNIA R.C.E. 18151

DETERMINATION OF NORTHLINE OF PARCEL 3