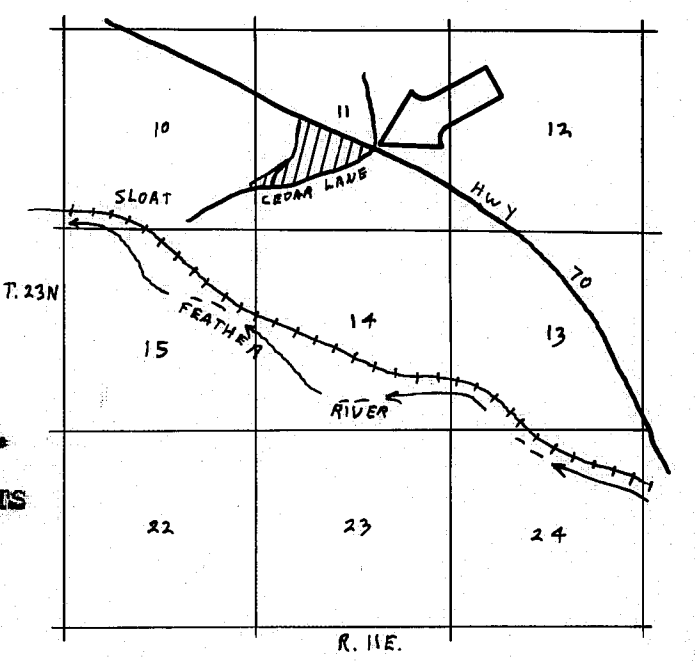


COUNTY TAX COLLECTOR'S CERTIFICATE

I, TAX COLLECTOR OF THE COUNTY OF PLUMAS, STATE OF CALIFORNIA, DO HEREBY CERTIFY THAT THERE ARE NO TAX LIENS AGAINST THE PARCELS, AS SHOWN HEREON, FOR UNPAID COUNTY, MUNICIPAL, OR LOCAL TAXES OR SPECIAL ASSESSMENTS COLLECTED AS TAXES, EXCEPT TAXES OR ASSESSMENTS NOT YET PAYABLE. TAXES OR ASSESSMENTS WHICH ARE A LIEN BUT NOT YET PAYABLE, ARE ESTIMATED TO BE IN THE AMOUNT OF NONE

Lois Alexander
 LOIS ALEXANDER
 PLUMAS COUNTY TAX COLLECTOR



SURVEYOR'S CERTIFICATE

THIS MAP WAS PREPARED BY ME OR UNDER MY DIRECTION AND WAS COMPILED FROM RECORD DATA AND IS BASED UPON A FIELD SURVEY IN CONFORMANCE WITH THE REQUIREMENTS OF THE SUBDIVISION MAP ACT AT THE REQUEST OF PHIL SCHROMM IN SEPTEMBER 1977. I HEREBY STATE THAT THE PARCEL MAP PROCEDURES OF THE LOCAL AGENCY HAVE BEEN COMPLIED WITH AND THAT THIS PARCEL MAP CONFORMS TO THE APPROVED TENTATIVE MAP AND THE CONDITIONS OF APPROVAL THEREOF WHICH WERE REQUIRED TO BE FULFILLED PRIOR TO THE FILING OF THE PARCEL MAP.

Gerald C. Henderson
 GERALD C. HENDERSON LS 3297

COUNTY SURVEYOR'S CERTIFICATE

THIS MAP CONFORMS WITH THE REQUIREMENTS OF THE SUBDIVISION MAP ACT AND LOCAL ORDINANCE.

DATED 12-29-77

Sam A. Fife
 PLUMAS COUNTY SURVEYOR

RECORDER'S CERTIFICATE

FILED THIS 29th DAY OF December, 1977, AT 11:45 A. M. IN BOOK 6 OF PARCEL MAPS, AT PAGE 34, AT THE REQUEST OF GERALD G. HENDERSON.

FEE \$5.00

FILE NO. 5349

RAYNELLE SLATEN
 COUNTY RECORDER

BY *Catherine Shuman*
 DEPUTY

PARCEL MAP

OF A SUBDIVISION INTO FOUR PARTS
 FOR
 PHIL AND APRIL SCHROMM SEPTEMBER 1977
 PORTION OF SECTION 10, 11, T. 23N., R. 11E., MM
 PLUMAS COUNTY, CALIFORNIA

GERALD C. HENDERSON
 LICENSED LAND SURVEYOR
 P. O. BOX 13
 PORTOLA, CALIFORNIA