

COUNTY TAX COLLECTOR'S CERTIFICATE

I, TAX COLLECTOR OF THE COUNTY OF PLUMAS, STATE OF CALIFORNIA, DO HEREBY CERTIFY THAT THERE ARE NO TAX LIENS AGAINST THE PARCELS, AS SHOWN HEREON, FOR UNPAID COUNTY, MUNICIPAL, OR LOCAL TAXES OR SPECIAL ASSESSMENTS COLLECTED AS TAXES, EXCEPT TAXES OR ASSESSMENTS NOT YET PAYABLE. TAXES OR ASSESSMENTS WHICH ARE A LIEN BUT NOT YET PAYABLE ARE ESTIMATED TO BE IN THE AMOUNT OF \$205.00

Lois Alexander
LOIS ALEXANDER
PLUMAS COUNTY TAX COLLECTOR

SURVEYOR'S CERTIFICATE

THIS MAP WAS PREPARED BY ME OR UNDER MY DIRECTION AND WAS COMPILED FROM RECORD DATA AND IS BASED UPON A FIELD SURVEY IN CONFORMANCE WITH THE REQUIREMENTS OF THE SUBDIVISION MAP ACT AT THE REQUEST OF FRANK FICK IN MAY 1978. I HEREBY STATE THAT THE PARCEL MAP PROCEDURES OF THE LOCAL AGENCY HAVE BEEN COMPLIED WITH AND THAT THIS PARCEL MAP CONFORMS TO THE APPROVED TENTATIVE MAP AND THE CONDITIONS OF APPROVAL THEREOF WHICH WERE REQUIRED TO BE FULFILLED PRIOR TO THE FILING OF THE PARCEL MAP.

Gerald C. Henderson
GERALD C. HENDERSON LS 3297

COUNTY SURVEYOR'S CERTIFICATE

THIS MAP CONFORMS WITH THE REQUIREMENTS OF THE SUBDIVISION MAP ACT AND LOCAL ORDINANCE.

DATED: 6/15/78

Samuel Fite
PLUMAS COUNTY SURVEYOR

RECORDER'S CERTIFICATE

FILED THIS 15th DAY OF June, 1978, AT 10:12 A.M. IN BOOK 6 OF PARCEL MAPS, AT PAGE 58, AT THE REQUEST OF THE COUNTY ENGINEER.

FEES \$ 5.00

RAYNELLE SLATEN
COUNTY RECORDER

FILE NO. 9072

By *Catherine Shuman*
DEPUTY

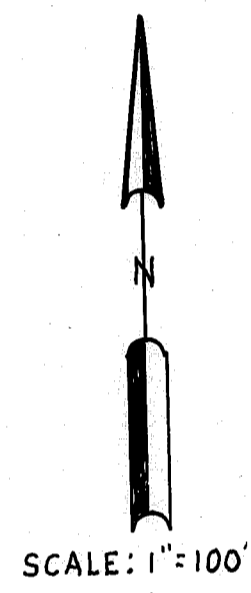
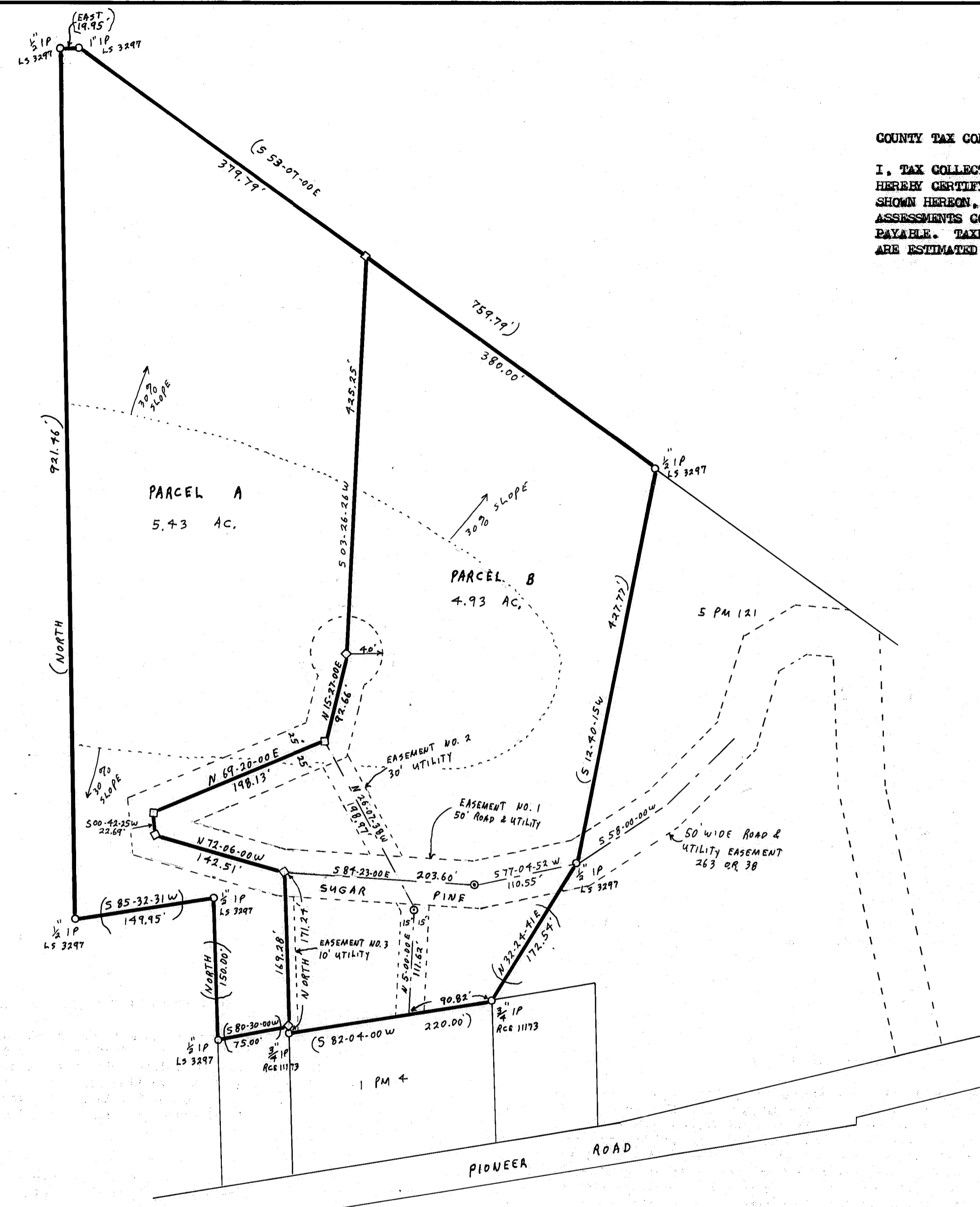
PARCEL MAP

OF A SUBDIVISION INTO TWO PARTS
FOR
FRANK & PEGGY FICK MAY 1978

PORTION OF SECTION 13, T. 24N., R. 9E., MDN
PARCEL 1 IN BOOK 5 OF PARCEL MAPS AT PAGE 121

PLUMAS COUNTY, CALIFORNIA

GERALD C. HENDERSON
LICENSED LAND SURVEYOR
P. O. BOX 1377
PORTOLA, CALIFORNIA



LEGEND
FOUND CORNER AS DESCRIBED HEREON:
COMPUTED CORNER LOCATION
SET 1/2" REBAR CAPPED LS 3297

NOTES

BASIS OF BEARING IS TAKEN FROM THAT CERTAIN MAP FILED IN BOOK 5 OF PARCEL MAPS AT PAGE 121, PLUMAS COUNTY RECORDS.

CERTIFICATE OF OWNER'S CONSENT TO PREPARATION AND RECORDING OF THIS MAP IS ON FILE IN THE COUNTY ENGINEER'S OFFICE DATED: 5-16-78

ROADS SHOWN HEREON ARE PRIVATE EASEMENTS THAT ARE ESTABLISHED BY A DECLARATION FILED CONCURRENT WITH, OR PRIOR TO RECORDATION OF THE FINAL MAP. SUCH EASEMENTS MAY NOT BECOME FULLY EFFECTIVE UNLESS AND UNTIL RESERVATIONS AND GRANTS ARE INCLUDED IN THE RESPECTIVE DEEDS.

LEACH EXCLUSION AREAS INCLUDE ALL AREAS WITHIN 50 FEET OF PROPERTY LINES, ALL SLOPES OF 30% OR GREATER, AND A DISTANCE OF FOUR TIMES THE VERTICAL HEIGHT FROM CUT AND FILL BANKS.

Dec Esm + 289 DR724