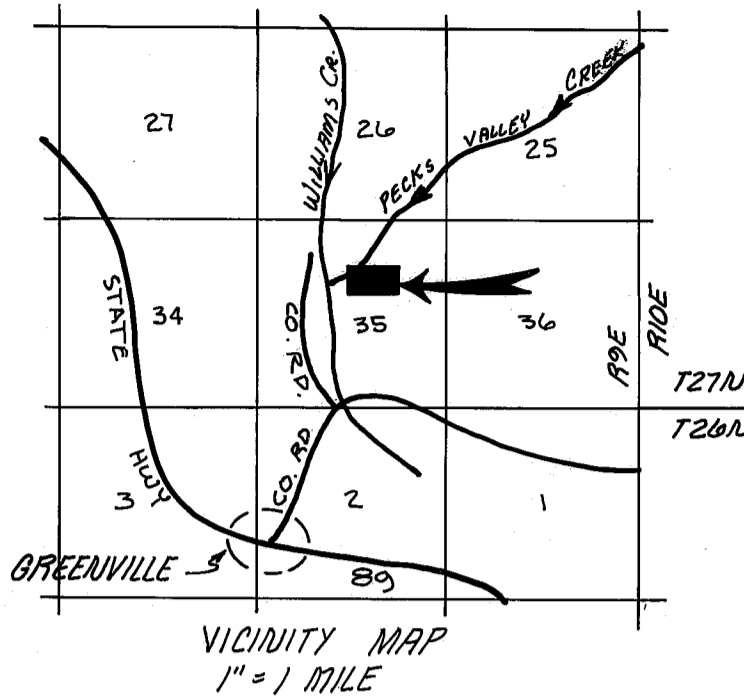


LEACH AREAS  
Not Within; 200' of high water  
of creek, 50' of lot lines, 50'  
from seasonal drainage channel,  
slopes greater than 30%.

COUNTY TAX COLLECTORS CERTIFICATE

I, Tax Collector of the County of Plumas, State of Calif.,  
do hereby certify that there are no tax liens against the  
Parcels as shown hereon, for unpaid County, Municipal, or  
local taxes or special assessments collected as taxes, except  
taxes or assessments not yet payable. Taxes or assessments  
which are a lien but not yet payable are estimated to be in  
the amount of \$200.00.

Lois Alexander  
LOIS ALEXANDER  
PLUMAS COUNTY TAX COLLECTOR



LEGEND

- Indicates a 3/4" iron pipe mkd. L.S. 3202 as shown in Bk 5 of P.M., Pg. 43.
- Fd. a 2" I.P. mkd. L.S. 3202 as shown in Bk 5 of P.M., Pg. 43.
- Indicates a 5/8" rebar mkd. L.S. 4036 set by this survey.
- Indicates found corners as described in "Corner Notes" in 5-R/S-3 & 4.
- Indicates data from 5-R/S-3 & 4.
- Indicates data from Bk. 2 of Records of Surveys, Pg. 35.
- Indicates data from Bk. 3 of P.M., Pg. 14.
- Found as noted.

NOTE: (OWNERS CERTIFICATE)

Prior to the filing of this map, a letter signed by the owners  
of lands shown hereon, was filed with the County Engineer, cert-  
ifying that the signers are the owners of the lands shown on said  
map, and that they consent to the preparation and filing of this  
map and that they are the only persons whose consent is required  
to pass title to said lands. Dated, July 19, 1978

NOTE:

Roads shown hereon are private easements that are established by  
a Declaration filed concurrent with or prior to recordation of the  
map. Such easements may not become fully effective unless and  
until reservations and grants are included in the respective deeds.

PARCEL MAP

FOR  
WILLIAM & DONNA PIERCE

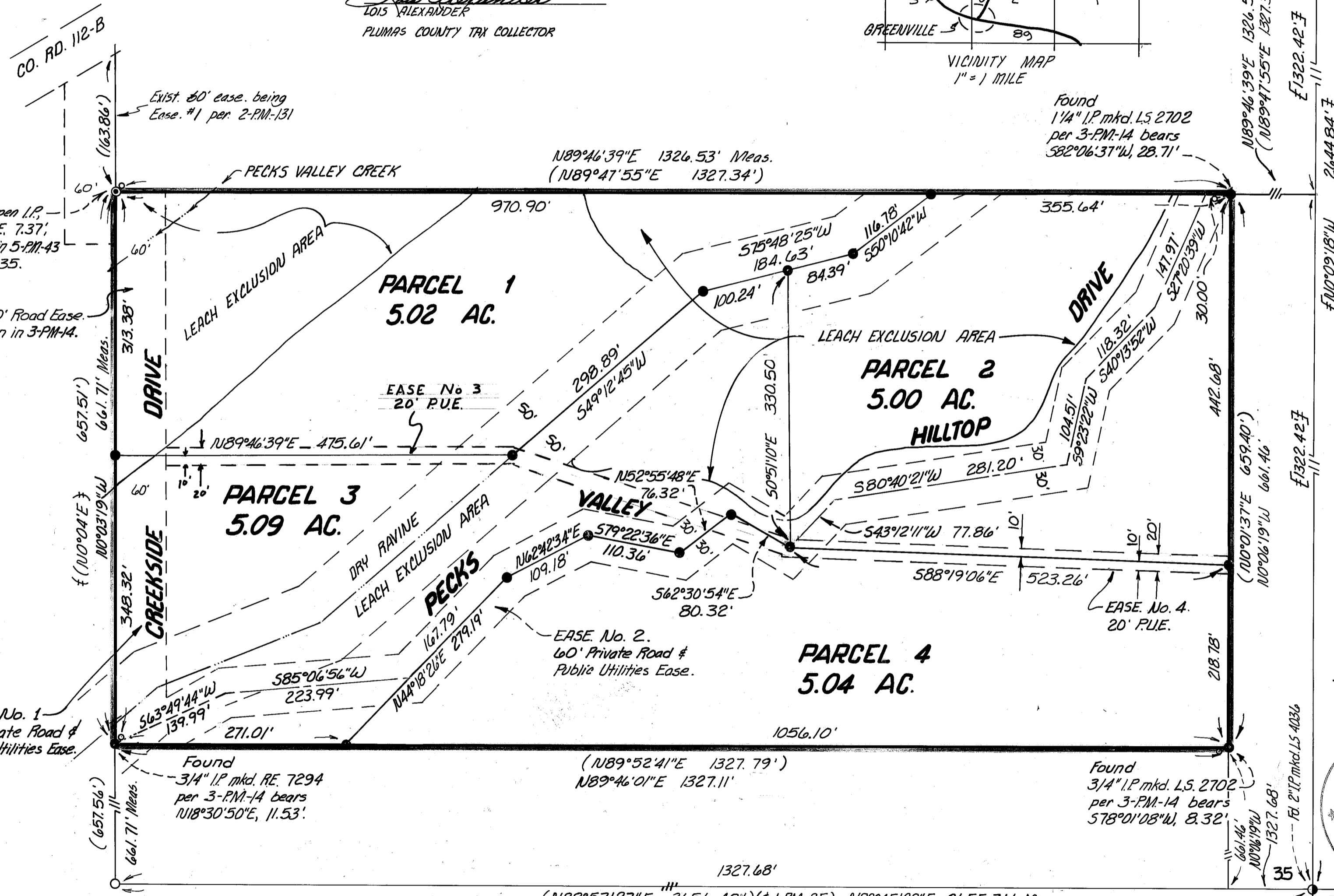
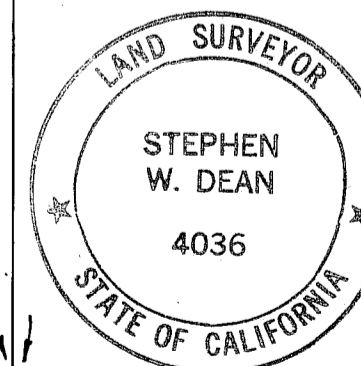
THE N 1/2 OF THE SW 1/4 OF THE NE 1/4 OF SEC. 35,  
T27N, R9E, M.D.M.  
BEING PARCEL 1 OF BOOK 3 OF PARCEL MAPS, PAGE 14.

IN THE UNINCORPORATED TERRITORY OF  
PLUMAS COUNTY, STATE OF CALIFORNIA

ASTRO SURVEYING & ENGINEERING  
P.O. BOX 624  
FALL RIVER MILLS, CALIF. 96028

MAY 1978

SCALE: 1"=100'



COUNTY SURVEYOR'S CERTIFICATE

THIS MAP CONFORMS WITH THE REQUIREMENTS OF THE "SUB-  
DIVISION MAP ACT" AND LOCAL ORDINANCE.

DATED: August 10 1978.

SIGNED: BY: Clifford L. Swann  
PLUMAS COUNTY SURVEYOR DEPUTY

RECORDER'S CERTIFICATE

FILED THIS 11th DAY OF August, 1978 AT 8:35 A.M.  
IN BOOK 6 OF PARCEL MAPS AT PAGE 72 AT THE  
REQUEST OF The County Engineer FEE: \$ 5.00  
FILE NO. 1184

SIGNED: RAYNELLE SLATEN BY: Catherine Sherman  
PLUMAS COUNTY RECORDER DEPUTY

SURVEYOR'S CERTIFICATE

THIS MAP WAS PREPARED BY ME, OR UNDER MY DIRECTION, (AND WAS BASED UPON A FIELD SURVEY) IN  
CONFORMANCE WITH THE REQUIREMENTS OF THE "SUBDIVISION MAP ACT" AT THE REQUEST OF:  
WILLIAM PIERCE ON FEB 30 1978. I HEREBY STATE THAT THE PARCEL MAP PROCEDURES OF THE  
LOCAL AGENCY HAVE BEEN COMPLIED WITH, AND THAT THIS PARCEL MAP CONFORMS TO THE APPROVED  
TENTATIVE MAP AND THE CONDITIONS OF APPROVAL THEREOF, WHICH WERE REQUIRED TO BE FULFILLED  
PRIOR TO THE FILING OF THE PARCEL MAP.

SIGNED: Stephen W. Dean STEPHEN W. DEAN L.S. 4036

SHEET 1 OF 1