

LOCATION MAP
SCALE: 1" = 1 MI.

SURVEYOR'S CERTIFICATE

This map was prepared by me or under my direction and is based upon a field survey in conformance with the requirements of the Subdivision Map Act at the request of W. Pruett on 11/1, 1977. I hereby state that the parcel map procedures of the local agency have been complied with and that this parcel map conforms to the approved tentative map and the conditions of approval thereof which were required to be fulfilled prior to the filing of the parcel map.



John W. Hamby
John W. Hamby LS 2843

COUNTY SURVEYOR'S CERTIFICATE

This map conforms with the requirements of the Subdivision Map Act and local ordinance.
Date: 8-17, 1978

(by) Clifford L. Brown REC 22836
Plumas County Engineer

COUNTY TAX COLLECTOR'S CERTIFICATE

I, Tax Collector of the County of Plumas, State of California, do hereby certify that there are no tax liens against the parcels, as shown hereon, for unpaid county, local or municipal taxes or special assessments collected as taxes, except taxes or assessments not yet payable. Taxes or assessments which are a lien but not yet payable, are estimated to be in the amount of \$515.00

Lois Alexander
Lois Alexander
Plumas County Tax Collector

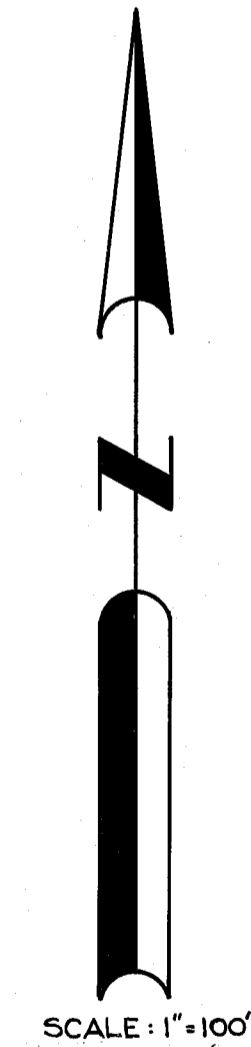
RECORDER'S CERTIFICATE

Filed this 17th day of August, 1978, at 4:00 P.M. in Book 6 of Parcel Maps at Page 75 at the request of the County Engineer.
File No. 14808
Fee \$5.00

Raynelle Slaten
County Recorder
by Catherine Shuman
Deputy

BASIS OF BEARINGS:
THE EAST LINE OF PARCEL 1 OF PARCEL MAP FILED VOL. 1 PM 2

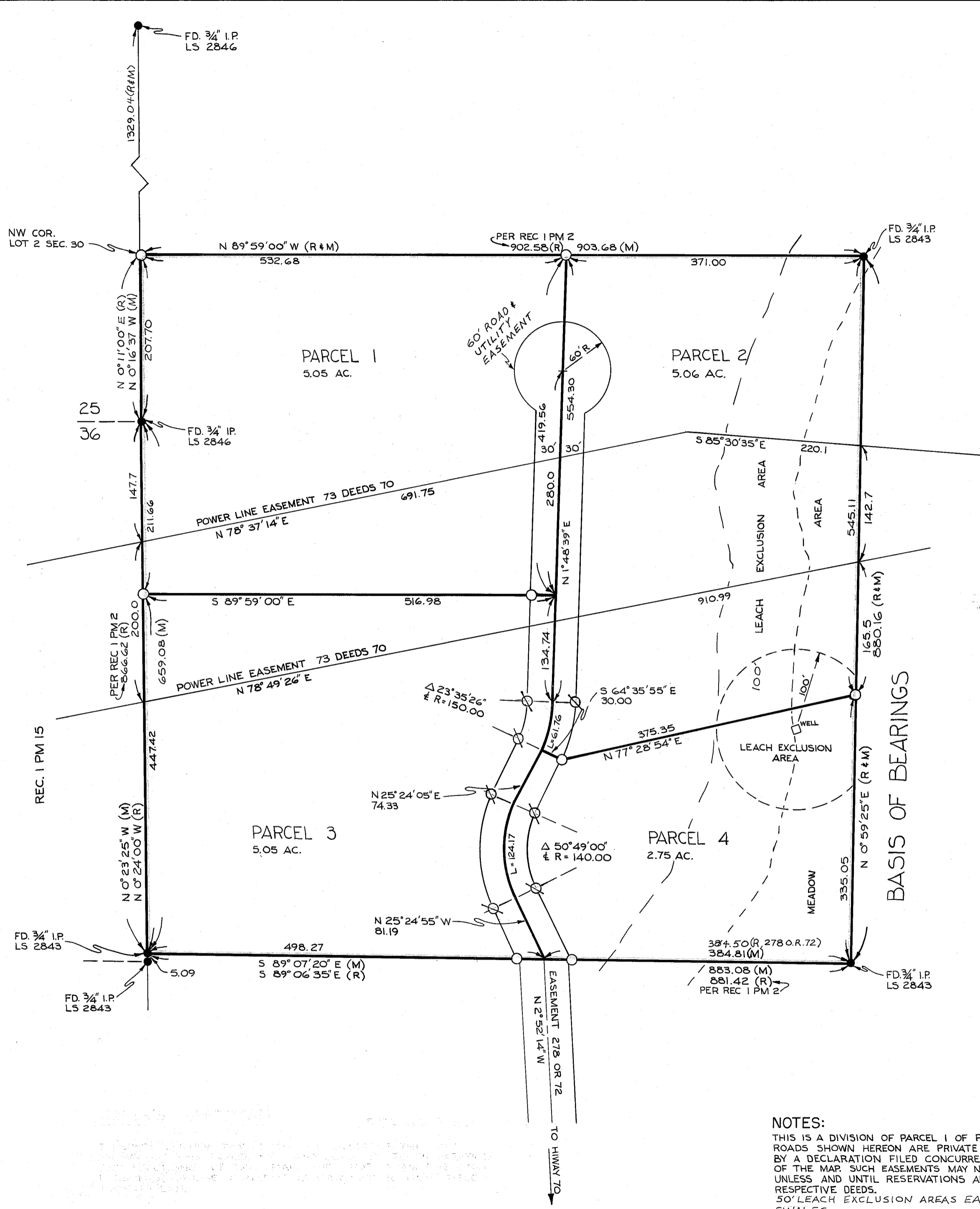
LEGEND:
○ = SET 3/8" REBAR WITH ALUMINUM CAP, LS 2843
● = FOUND POINTS AS NOTED
(R) = RECORD INFORMATION
(M) = MEASURED
⊙ = SET 3/4" I.P., L.S. 2843



SCALE: 1" = 100'

NOTES:

THIS IS A DIVISION OF PARCEL 1 OF PARCEL MAP FILED VOL. 1 PM 2. ROADS SHOWN HEREON ARE PRIVATE EASEMENTS THAT ARE ESTABLISHED BY A DECLARATION FILED CONCURRENT WITH OR PRIOR TO RECORDATION OF THE MAP. SUCH EASEMENTS MAY NOT BECOME FULLY EFFECTIVE UNLESS AND UNTIL RESERVATIONS AND GRANTS ARE INCLUDED IN THE RESPECTIVE DEEDS.
50' LEACH EXCLUSION AREAS EACH SIDE OF EXISTING DRAINAGE SWALES.
CERTIFICATE OF OWNER'S CONSENT TO PREPARATION AND RECORDING OF THIS MAP IS ON FILE IN THE COUNTY ENGINEER'S OFFICE DATED: 6/29/78



PARCEL MAP
FOR
WILMER W. PRUETT
A PORTION OF SECTION 30
T 23 N., R 14 E., M.D.B. & M.
PLUMAS COUNTY, CALIFORNIA

BY
JOHN W. HAMBY, LS 2843
LICENSED LAND SURVEYOR
P.O. BOX 842, 832 5571
PORTOLA, CALIFORNIA
SHEET 1 OF 1