

LOCATION MAP

COUNTY TAX COLLECTOR'S CERTIFICATE

I, TAX COLLECTOR OF THE COUNTY OF PLUMAS, STATE OF CALIFORNIA, DO HEREBY CERTIFY THAT THERE ARE NO TAX LIENS AGAINST THE PARCELS, AS SHOWN HEREON, FOR UNPAID COUNTY, MUNICIPAL, OR LOCAL TAXES OR SPECIAL ASSESSMENTS COLLECTED AS TAXES, EXCEPT TAXES OR ASSESSMENTS NOT YET PAYABLE. TAXES OR ASSESSMENTS WHICH ARE A LIEN BUT NOT YET PAYABLE ARE ESTIMATED TO BE IN THE AMOUNT OF \$280.00

Luiz Alexander
PLUMAS COUNTY TAX COLLECTOR

SURVEYOR'S CERTIFICATE

THIS MAP WAS PREPARED BY ME OR UNDER MY DIRECTION AND IS BASED UPON A FIELD SURVEY IN CONFORMANCE WITH THE REQUIREMENTS OF THE SUBDIVISION MAP ACT AT THE REQUEST OF T. JOY & R. BROWN IN SEPTEMBER 1976. I HEREBY STATE THAT THE PARCEL MAP PROCEDURES OF THE LOCAL AGENCY HAVE BEEN COMPLIED WITH AND THAT THIS PARCEL MAP CONFORMS TO THE APPROVED TENTATIVE MAP AND THE CONDITIONS OF APPROVAL THEREOF, WHICH WERE REQUIRED TO BE FULFILLED PRIOR TO THE FILING OF THE PARCEL MAP.

Gerald C. Henderson
GERALD C. HENDERSON LS 3297

COUNTY SURVEYOR'S CERTIFICATE

THIS MAP CONFORMS WITH THE REQUIREMENTS OF THE SUBDIVISION MAP ACT AND LOCAL ORDINANCE.

DATED: 9-25-78

(by) Clifford R. Brown REC 22836
COUNTY ENGINEER

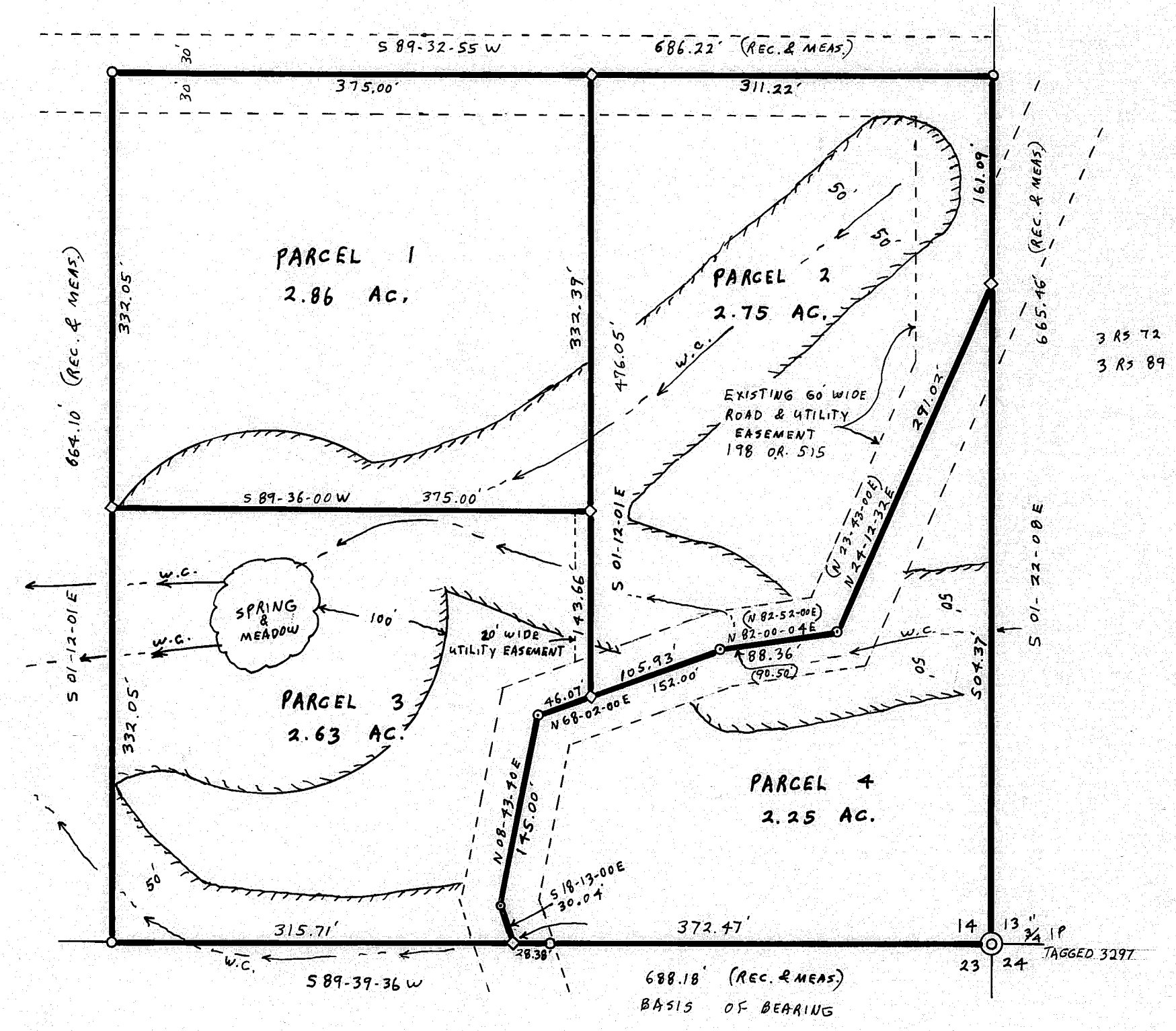
RECORDER'S CERTIFICATE

FILED THIS 25th DAY OF September, 1978, AT 2:42 P.M. IN BOOK 6 OF PARCEL MAPS AT PAGE 78, AT THE REQUEST OF GERALD C. HENDERSON.

FEE \$5.00

FILE NO. 2801

By: Catherine Slatten
RAYNELLE SLATTEN
COUNTY RECORDER



3 PM 24

3 PM 121

NOTES

BASIS OF BEARING IS TAKEN FROM THAT CERTAIN MAP FILED IN BOOK 3 OF PARCEL MAPS AT PAGE 24, PLUMAS COUNTY, CALIFORNIA.
CERTIFICATE OF OWNER'S CONSENT TO PREPARATION AND RECORDING OF THIS MAP IS ON FILE IN THE COUNTY ENGINEER'S OFFICE.
THERE IS A REQUIRED 100' LEACH SETBACK FROM FUTURE WELL SITES ON ADJACENT LANDS.

LEGEND

FOUND 3/4" IP TAGGED LS 3297
RECORD SECTION CORNER LOCATION FROM 3 RS 89
COMPUTED CORNER LOCATION
SET 1/2" IP TAGGED LS 3297
WATERCOURSE
LEACH SETBACK LINE



PARCEL MAP

OF A SUBDIVISION INTO FOUR PARTS
FOR
THOMAS & REBECCA JOY SEPTEMBER 1976
RONALD BROWN & Carolyn Brown
PORTION OF SECTION 14, T. 22N., R. 12E., MDM
PARCEL 1 IN BOOK 3 OF PARCEL MAPS AT PAGE 24
PLUMAS COUNTY, CALIFORNIA

GERALD C. HENDERSON
LICENSED LAND SURVEYOR
P. O. BOX 13
PORTOLA, CALIFORNIA