

NOTE: (OWNERS CERTIFICATE)

Prior to the filing of this map, a letter signed by the owners of lands shown hereon, was filed with the County Engineer, certifying that the signers are the owners of the lands shown on said map, and that they consent to the preparation and filing of this map, and that they are the only persons whose consent is required to pass title to said lands. Dated: 8-2-78

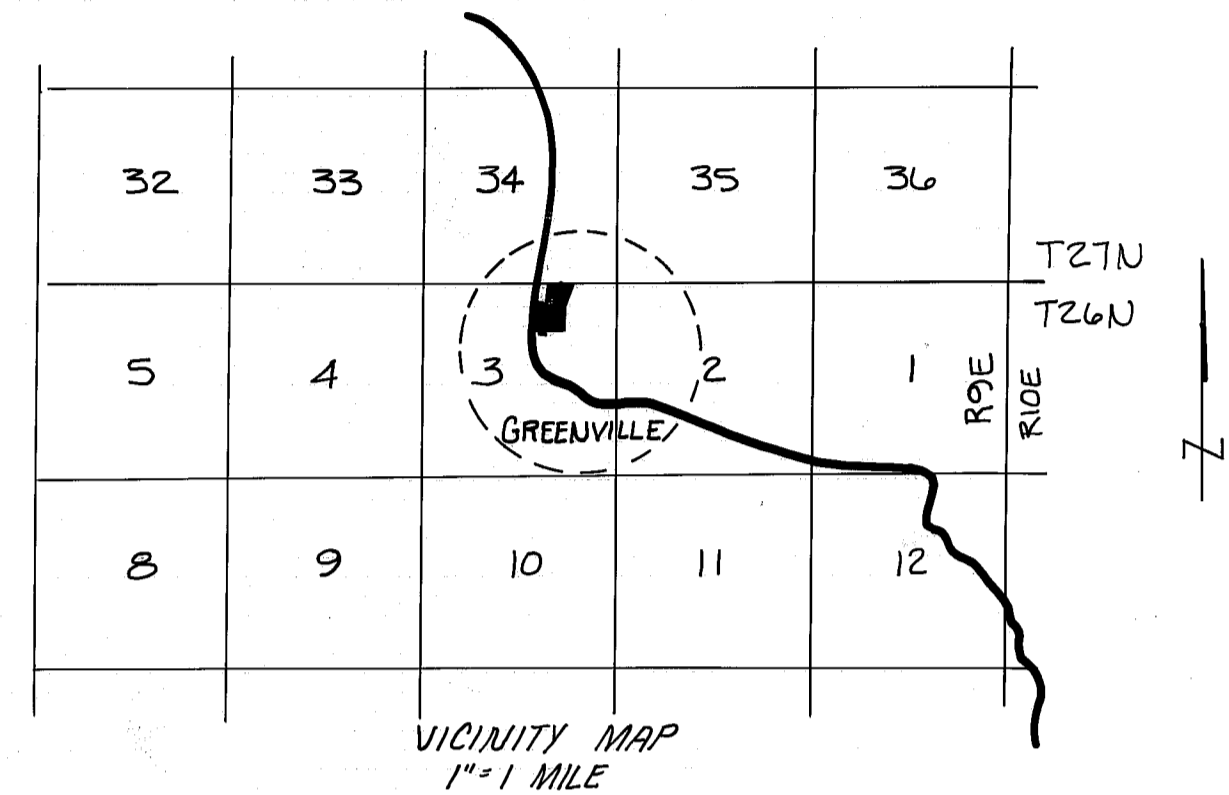
COUNTY TAX COLLECTORS CERTIFICATE

I, Tax Collector of the County of Plumas, State of Calif, do hereby certify that there are no tax liens against the parcels as shown hereon, for unpaid County, Municipal, or local taxes or special assessments collected as taxes, except taxes or assessments not yet payable. Taxes or assessments which are a lien but not yet payable are estimated to be in the amount of NONE.

Lois Alexander
LOIS ALEXANDER
PLUMAS COUNTY TAX COLLECTOR

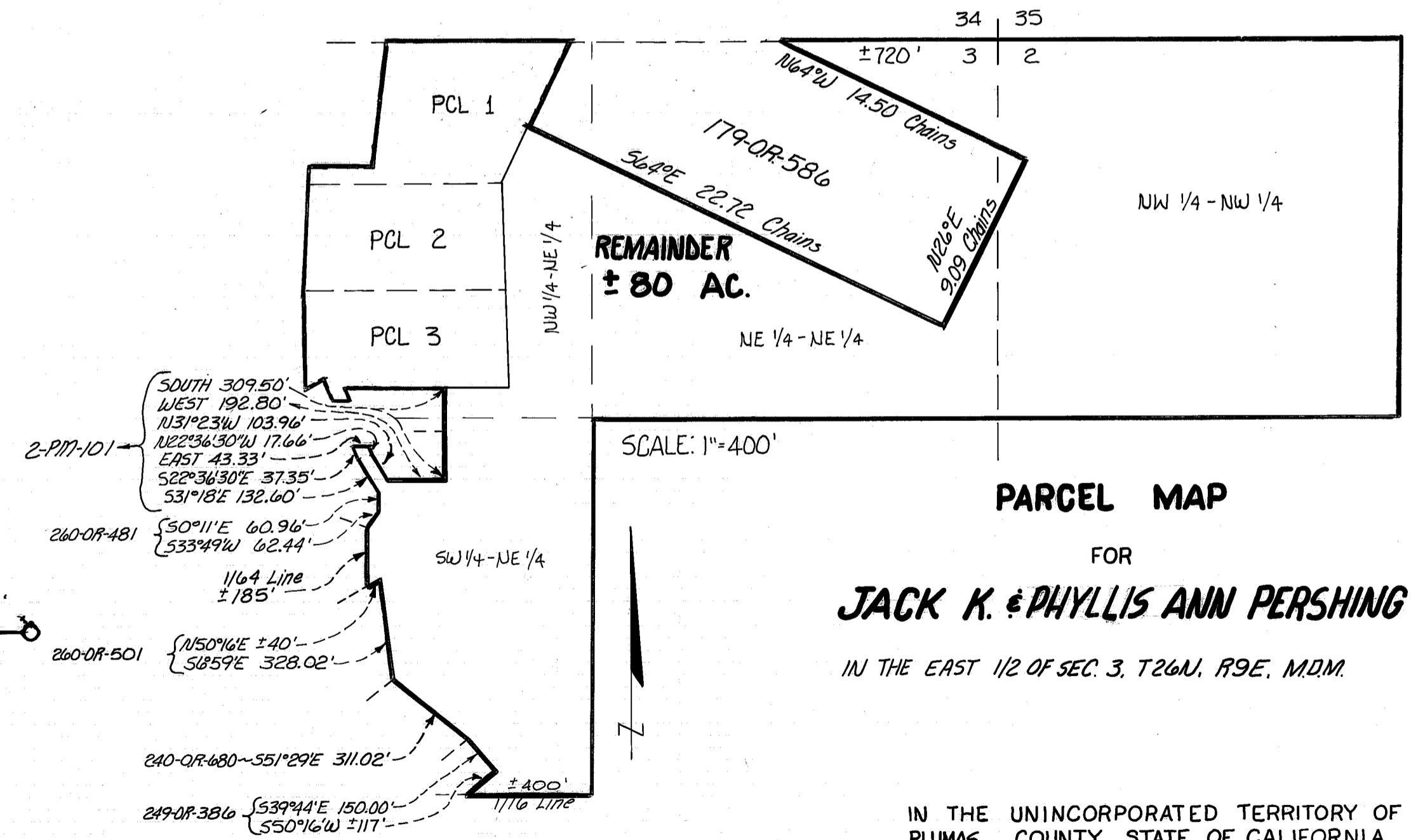
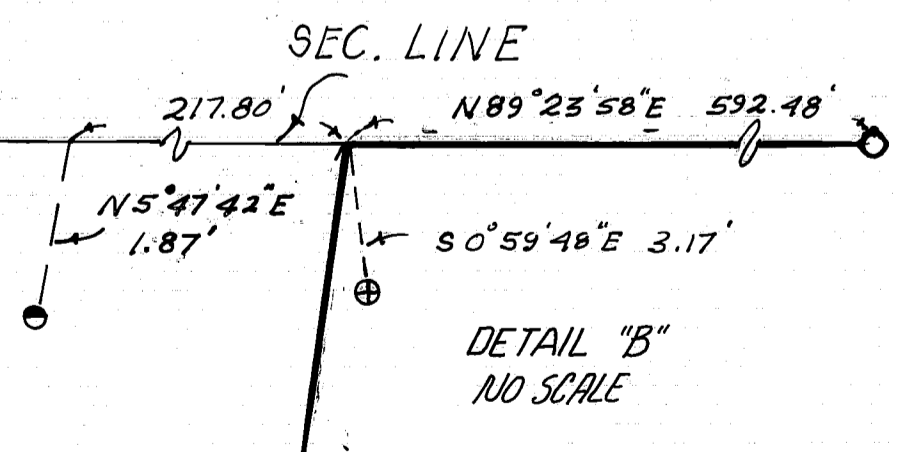
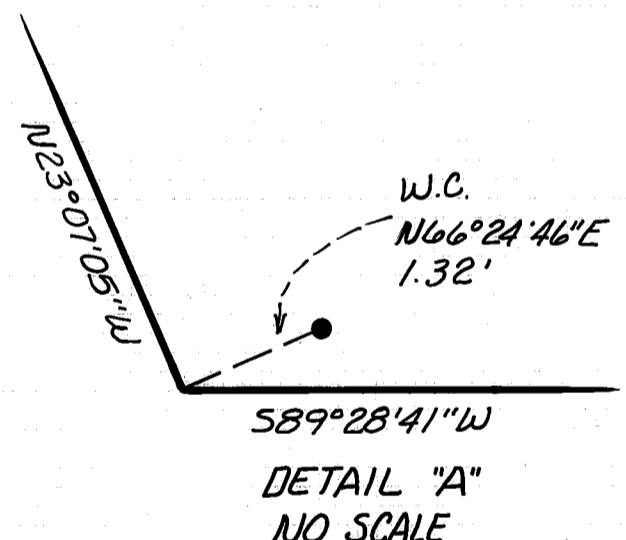
LEACH EXCLUSION AREAS
Within 200' of high water of any creek, within 50' of all lot lines, within 50' of seasonal drainage channels, on all slopes greater than 30%, within 100' of wells, 4 x vertical height of cut banks.

ROADS
Roads shown hereon are private easements that are established by a declaration filed concurrent with or prior to recordation of the map. Such easements may not become fully effective unless and until reservations and grants are included in the respective deeds.



- A N53°47'23"W 65.33'
- B E R=99.85
Δ=39°01'24"
L=68.01'
- C E R=55.00'
Δ=65°44'13"
L=63.10'
- D N80°30'12"W 74.43'
- E E R=100.00'
Δ=39°57'15"
L=69.73'
- F N40°32'57"W 22.12'
- G E R=125.00'
Δ=27°13'36"
L=59.40'
- H N13°19'20"W 55.73'
- I E R=175.00'
Δ=29°06'24"
L=88.90'
- J N15°47'04"E 67.61'
- K E R=150.00'
Δ=37°22'43"
L=97.86'
- L N53°09'47"E 97.14'
- M E R=85.00'
Δ=62°31'47"
L=92.76'
- N N9°22'W 17.25'
- O E R=100.00'
Δ=52°31'16"
L=91.67'
- P N43°09'17"E 30.12'
- Q E R=80.00'
Δ=48°08'00"
L=67.21'
- R 588°42'43"E 24.06'
- S E R=30.00'
Δ=104°28'17"
L=54.70'
- T N13°11'00"W 37.34'
- U E R=125.00'
Δ=44°02'19"
L=96.08'
- V N30°51'19"E 86.87'
- W E R=50.00'
Δ=54°11'28"
L=47.29'
- X N23°20'09"W 27.62'

- Y E R=175.00'
Δ=8°35'19"
L=26.23'
- Z E R=175.00'
Δ=20°31'05"
L=62.67'
- 1 E R=60.00'
Δ=63°44'52"
L=66.76'
- 2 N38°00'59"E 52.16'
- 3 E R=65.00'
Δ=75°07'02"
L=85.22'
- 4 S66°51'59"E 37.96'
- 5 E R=75.00'
Δ=53°34'37"
L=70.13'
- 6 N59°33'24"E 48.16' To E Intx.
- 7 E R=85.00'
Δ=44°34'23"
L=66.12'
- 8 E R=85.00'
Δ=3°20'28"
L=4.96'
- 9 E R=85.00'
Δ=14°36'56"
L=21.68'
- 10 R/W R=4900.00'
Δ=1°19'04"
L=112.71'
- 11 R/W R=4900.00'
Δ=2°38'26"
L=225.82'
- 12 R/W R=4900.00'
Δ=0°47'38"
L=67.91'
- 13 R/W R=4900.00'
Δ=3°57'30"
L=338.52'
- 14 R/W R=4900.00'
Δ=0°41'16"
L=58.83'
- 15 R/W R=4900.00'
Δ=1°31'16"
L=130.08'



PARCEL MAP
FOR
JACK K. & PHYLLIS ANN PERSHING
IN THE EAST 1/2 OF SEC. 3, T26N, R9E, M2M.

IN THE UNINCORPORATED TERRITORY OF PLUMAS COUNTY, STATE OF CALIFORNIA
ASTRO SURVEYING & ENGINEERING
P.O. BOX 624
FALL RIVER MILLS, CALIF. 96028
JULY 1978 SHEET 2 OF 2