

BASIS OF BEARINGS

THE BASIS OF BEARINGS OF THIS PARCEL MAP IS THE EAST LINE OF PARCEL ONE, 5 PM 141, SHOWN AS N00°55'12"W.

LEGEND

- SET 3/4" I.P., RCE 26870
- FD. MONUMENT AS DESCRIBED
- ◆ FD. SECTION CORNER AS DESCRIBED
- LEACH EXCLUSION LIMITS

NOTES

1. ALL FUTURE ON-SITE WELL LOCATIONS MUST MAINTAIN 100' SEPARATION DISTANCE FROM EXISTING LEACH FIELDS ON ADJOINING PROPERTIES, PURSUANT TO ORD. 76-162.
2. EASEMENTS:
 - A. EXISTING 20' UTILITY EASEMENT PER 5 PM 141.
 - B. 20' UTILITY EASEMENT.
 - C. 20' PUBLIC UTILITY EASEMENT.
3. CERTIFICATE OF OWNERS CONSENT TO THE PREPARATION AND RECORDING OF THIS MAP IS ON FILE IN THE COUNTY ENGINEERS OFFICE, DATED Nov. 11, 1978.
4. ROADS SHOWN HEREON (OR DESCRIBED HEREIN) ARE PRIVATE ROADS NOT SUBJECT TO COUNTY IMPROVEMENT OR MAINTENANCE. IT WILL BE REQUIRED THAT SUCH ROADS BE IMPROVED TO COUNTY STANDARDS AT NO COST TO THE COUNTY BEFORE SUCH ROADS WILL BE ACCEPTED INTO THE COUNTY ROAD SYSTEM.
5. ROADS SHOWN HEREON ARE PRIVATE EASEMENTS THAT ARE ESTABLISHED BY A DECLARATION FILED CONCURRENT WITH OR PRIOR TO RECORDATION OF THE MAP. SUCH EASEMENTS MAY NOT BECOME FULLY EFFECTIVE UNLESS AND UNTIL RESERVATIONS AND GRANTS ARE INCLUDED IN THE RESPECTIVE DEEDS.
6. LEACH EXCLUSION AREAS SHALL INCLUDE ALL AREAS WITH SLOPES STEEPER THAN 30%; ALL AREAS WITHIN 50' OF A PROPERTY LINE; ALL AREAS WITHIN 50' OF A SEASONAL DRAINAGE; AND ALL AREAS WITHIN 100' OF THE HIGH WATER LINE OF WILLIAMS CREEK.

ENGINEER'S CERTIFICATE

THIS MAP WAS PREPARED BY ME OR UNDER MY DIRECTION AND IS BASED UPON A FIELD SURVEY IN CONFORMANCE WITH THE REQUIREMENTS OF THE SUBDIVISION MAP ACT AT THE REQUEST OF LOREN LINDNER & PRISCILLA HILTON IN OCT. 1978. I HEREBY STATE THAT THE PARCEL MAP PROCEDURES OF THE LOCAL AGENCY HAVE BEEN COMPLIED WITH AND THAT THIS PARCEL MAP CONFORMS TO THE APPROVED TENTATIVE MAP AND THE CONDITIONS OF APPROVAL THEREOF WHICH WERE REQUIRED TO BE FULFILLED PRIOR TO THE FILING OF THE PARCEL MAP.

Joseph G. Brandt
JOSEPH G. BRANDT R.C.E. 26870

COUNTY SURVEYOR'S CERTIFICATE

THIS MAP CONFORMS WITH THE REQUIREMENTS OF THE SUBDIVISION MAP ACT AND LOCAL ORDINANCE.

11-20-78 (by) *Clifford R. Brown* R.C.E. 22836
DATED PLUMAS COUNTY SURVEYOR

COUNTY TAX COLLECTOR'S CERTIFICATE

I, TAX COLLECTOR OF THE COUNTY OF PLUMAS, STATE OF CALIFORNIA, DO HEREBY CERTIFY THAT THERE ARE NO TAX LIENS AGAINST THE PARCELS, AS SHOWN HEREON, FOR UNPAID COUNTY, MUNICIPAL, OR LOCAL TAXES OR SPECIAL ASSESSMENTS COLLECTED AS TAXES, EXCEPT TAXES OR ASSESSMENTS NOT YET PAYABLE. TAXES OR ASSESSMENTS WHICH ARE A LIEN BUT NOT YET PAYABLE ARE ESTIMATED TO BE IN THE AMOUNT OF \$ NONE.

Lois Alexander
Barbara Alphonse Deputy
LOIS ALEXANDER
PLUMAS COUNTY TAX COLLECTOR

COUNTY RECORDER'S CERTIFICATE

FILED THIS 20th DAY OF November, 1978, AT 3:30 P.M. IN BOOK 6 OF PARCEL MAPS AT PAGE 96, AT THE REQUEST OF THE COUNTY ENGINEER.

RAYNELLE SLATEN
COUNTY RECORDER

FEE # 500
FILE NO. 3706

By *Catherine Shuman*
DEPUTY

PARCEL MAP

OF
SUBDIVISION INTO TWO PARCELS
FOR
LOREN LINDNER & PRISCILLA HILTON
WITHIN
N.W. 1/4 OF S.E. 1/4 OF SECTION 35
T.27 N., R.9E., M DM
WITHIN
PLUMAS COUNTY, CALIFORNIA

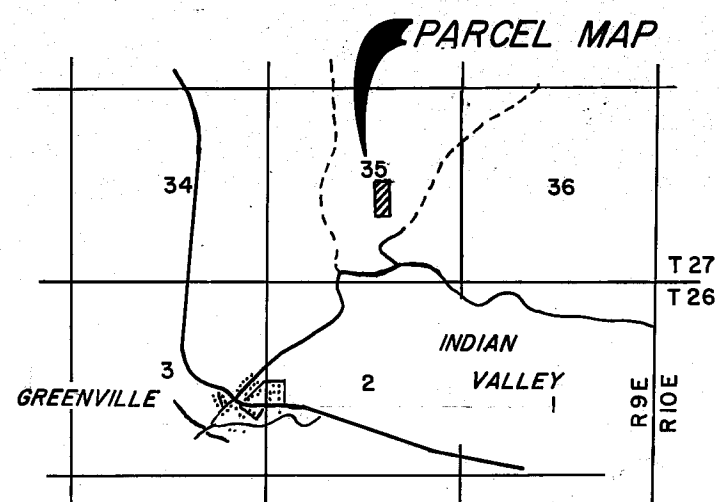
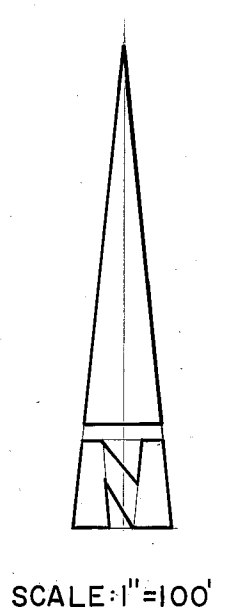
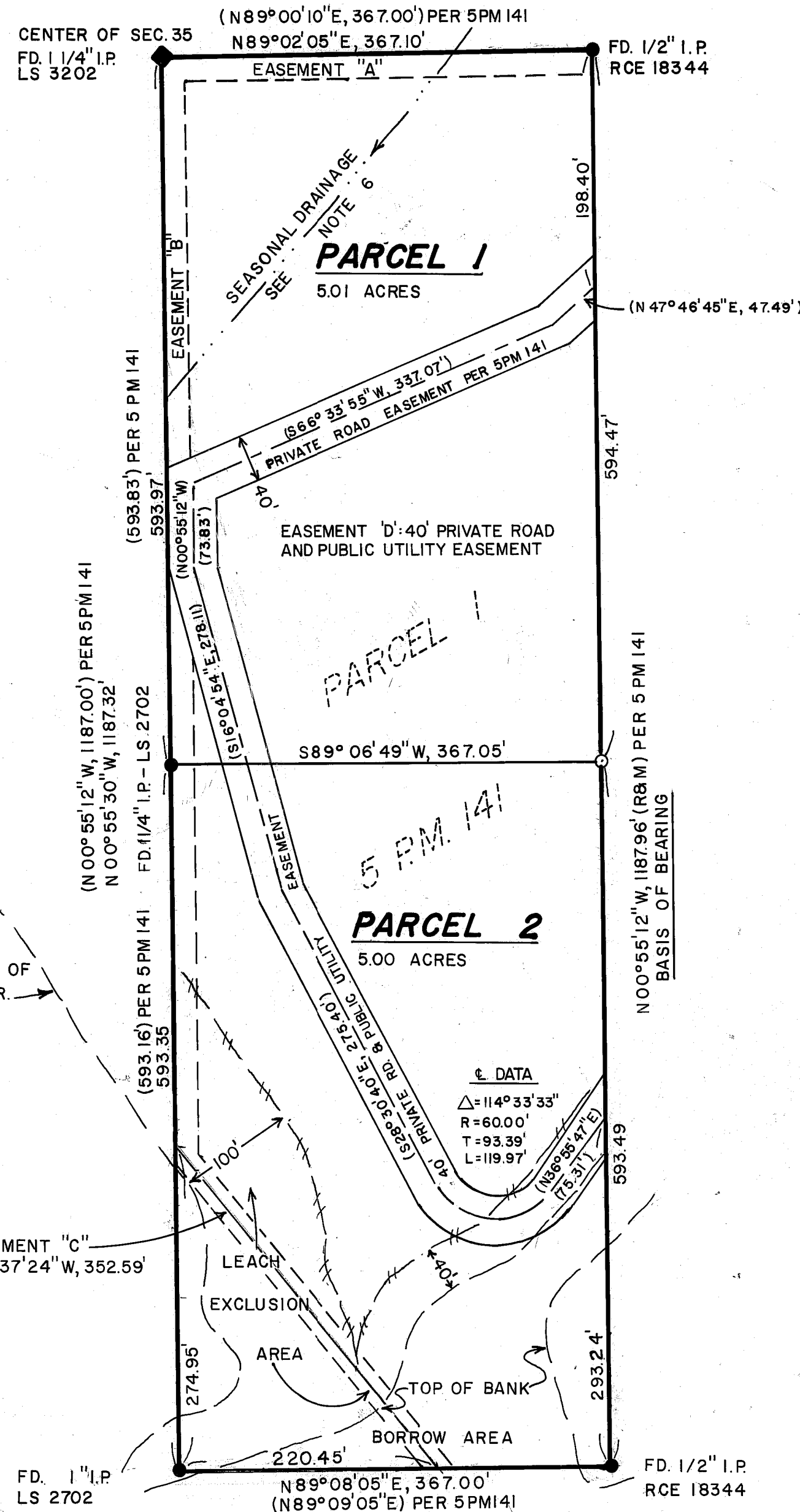
brandt & associates
CIVIL ENGINEERS ~ SURVEYORS

75 COURT STREET
QUINCY, CALIFORNIA 95971

P.O. BOX 749
916-283-1111

W.O. No. 781003

DATE: NOV. 1978
SHEET 1 OF 1



LOCATION MAP
SCALE: 1" = 1 mi.