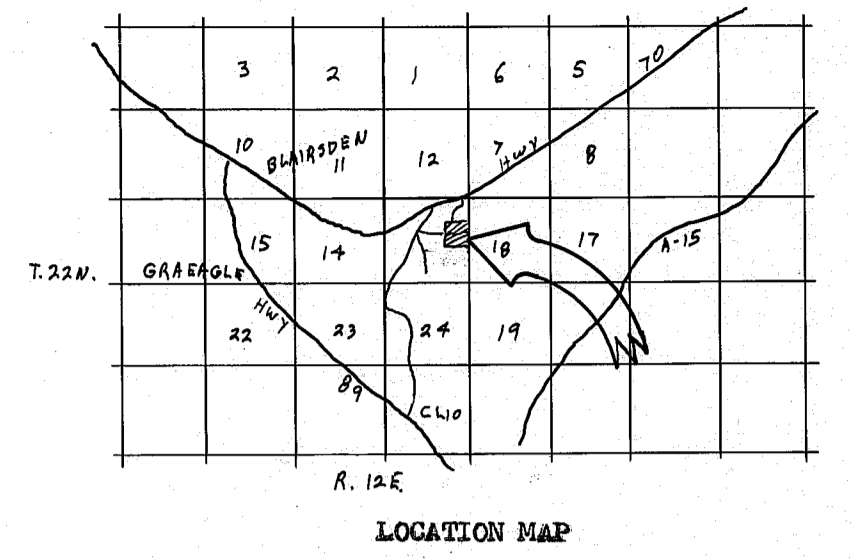


COUNTY TAX COLLECTOR'S CERTIFICATE

I, TAX COLLECTOR OF THE COUNTY OF PLUMAS, STATE OF CALIFORNIA, DO HEREBY CERTIFY THAT THERE ARE NO TAX LIENS AGAINST THE PARCELS, AS SHOWN HEREON, FOR UNPAID COUNTY, MUNICIPAL, OR LOCAL TAXES OR SPECIAL ASSESSMENTS COLLECTED AS TAXES, EXCEPT TAXES OR ASSESSMENTS NOT YET PAYABLE. TAXES OR ASSESSMENTS WHICH ARE A LIEN BUT NOT YET PAYABLE, ARE ESTIMATED TO BE IN THE AMOUNT OF NONE

Lois Alexander
LOIS ALEXANDER
PLUMAS COUNTY TAX COLLECTOR



SURVEYOR'S CERTIFICATE

THIS MAP WAS PREPARED BY ME OR UNDER MY DIRECTION AND WAS COMPILED FROM RECORD DATA AND IS BASED UPON A FIELD SURVEY IN CONFORMANCE WITH THE REQUIREMENTS OF THE SUBDIVISION MAP ACT AT THE REQUEST OF ROD TURNER IN NOVEMBER 1978. I HEREBY STATE THAT THE PARCEL MAP PROCEDURES OF THE LOCAL AGENCY HAVE BEEN COMPLIED WITH AND THAT THIS PARCEL MAP CONFORMS TO THE APPROVED TENTATIVE MAP AND THE CONDITIONS OF APPROVAL THEREOF WHICH WERE REQUIRED TO BE FULFILLED PRIOR TO THE FILING OF THE PARCEL MAP.

Gerald C. Henderson
GERALD C. HENDERSON LS 3297

COUNTY SURVEYOR'S CERTIFICATE

THIS MAP CONFORMS WITH THE REQUIREMENTS OF THE SUBDIVISION MAP ACT AND LOCAL ORDINANCE.

DATED: December 19 1978

Lawrence J. Brock
LAWRENCE J. BROCK
PLUMAS COUNTY SURVEYOR

RECORDER'S CERTIFICATE

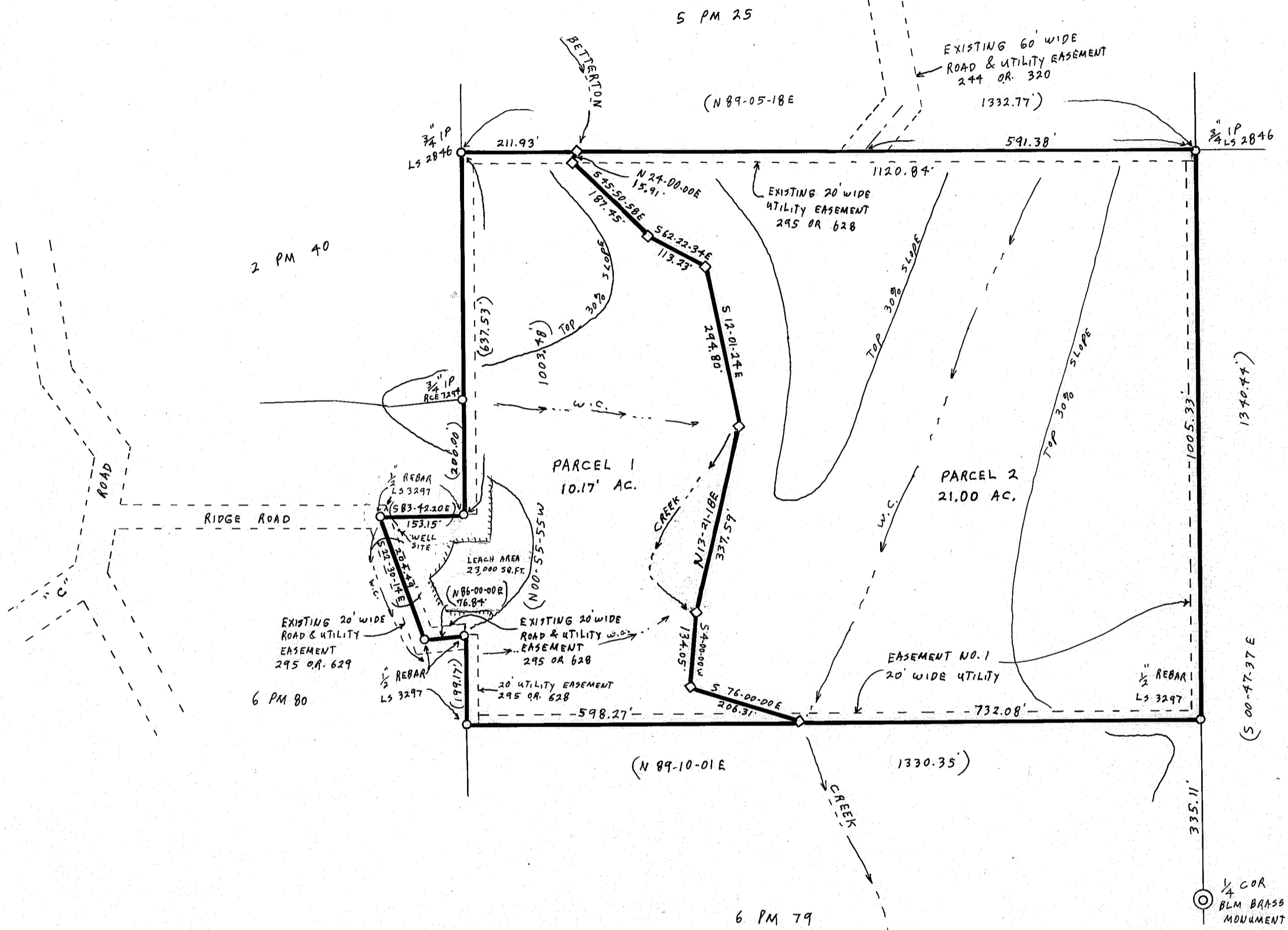
FILED THIS 19th DAY OF December, 1978, AT 1:50 P.M. IN BOOK 6 OF PARCEL MAPS, AT PAGE 103, AT THE REQUEST OF THE COUNTY ENGINEER.

FEE \$5.00

FILE NO. 5341

RAYNELLE SLATEN
COUNTY RECORDER

BY *Isabelle Andrews*
ISABELLE ANDREWS
DEPUTY



NOTES

BASIS OF BEARING IS TAKEN FROM THAT CERTAIN MAP FILED IN BOOK 6 OF PARCEL MAPS AT PAGE 80, PLUMAS COUNTY RECORDS.

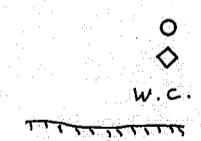
CERTIFICATE OF OWNER'S CONSENT TO PREPARATION AND RECORDING OF THIS MAP IS ON FILE IN THE COUNTY ENGINEER'S OFFICE, DATED 10-13-78

ROADS SHOWN HEREON ARE PRIVATE EASEMENTS THAT ARE ESTABLISHED BY A DECLARATION FILED CONCURRENT WITH, OR PRIOR TO RECORDATION OF THE FINAL MAP. SUCH EASEMENTS MAY NOT BECOME FULLY EFFECTIVE UNLESS AND UNTIL RESERVATIONS AND GRANTS ARE INCLUDED IN THE RESPECTIVE DEEDS.

LEACH EXCLUSION AREAS INCLUDE ALL AREAS WITHIN EASEMENTS, WITHIN 100' OF CREEKS, WITHIN 50' OF WATERCOURSES AND PROPERTY LINES, AND ALL SLOPES OF 30% OR GREATER.

LEGEND

FOUND CORNER AS SHOWN
SET 1/2" REBAR CAPPED LS 3297
WATERCOURSE
LEACH SETBACK LINE



PARCEL MAP

OF A SUBDIVISION INTO TWO PARTS
FOR
RODNEY TURNER
NOVEMBER 1978
PORTION OF SECTION 13, T. 22N., R. 12E., MM
PLUMAS COUNTY, CALIFORNIA

GERALD C. HENDERSON
CIVIL ENGINEER-LAND SURVEYOR
P. O. BOX 1377
PORTOLA, CALIFORNIA