

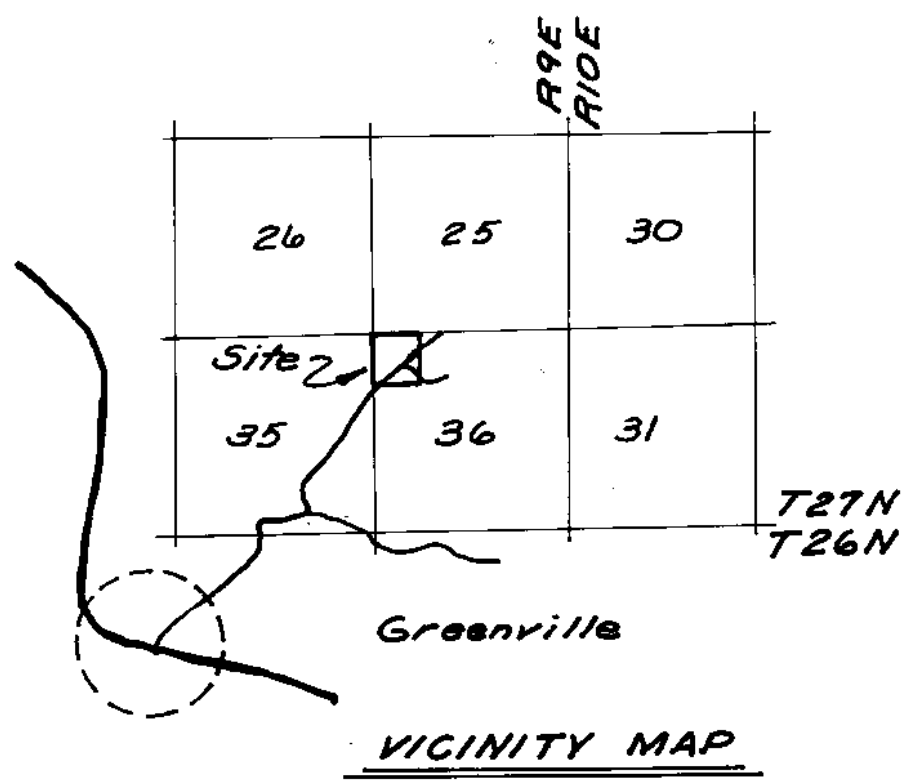
NOTE (OWNERS CERTIFICATE)

Prior to the filing of this map, a letter signed by the owners of lands shown hereon, was filed with the County Engineer, certifying that the signers are the owner of the lands shown on said map, and that they consent to the preparation and filing of this map and that they are the only persons whose consent is required to pass title to said lands.
 Dated: October 30, 1978

COUNTY TAX COLLECTORS CERTIFICATE

I, Tax Collector of the County of Plumas, State of California, do hereby Certify that there are no tax liens against the parcels as shown hereon for unpaid County, Municipal, or local taxes or special assessments collected as taxes, except taxes or assessments not yet payable. Taxes or assessments which are a lien but not yet payable, are estimated to be in the amount of NONE.

Lois Alexander
 Plumas County Tax Collector.
 LOIS ALEXANDER



LEGEND

- ⊙ - Indicates points found or set as described in corner notes.
- ⊙ - Indicates a 5/8" rebar of alum. cap mkd. L.S. 4036 set by this survey.
- () - Indicates data from bk. 5, Record of Surveys, Pg. 3 f. 4. R. & M.

CORNER NOTES

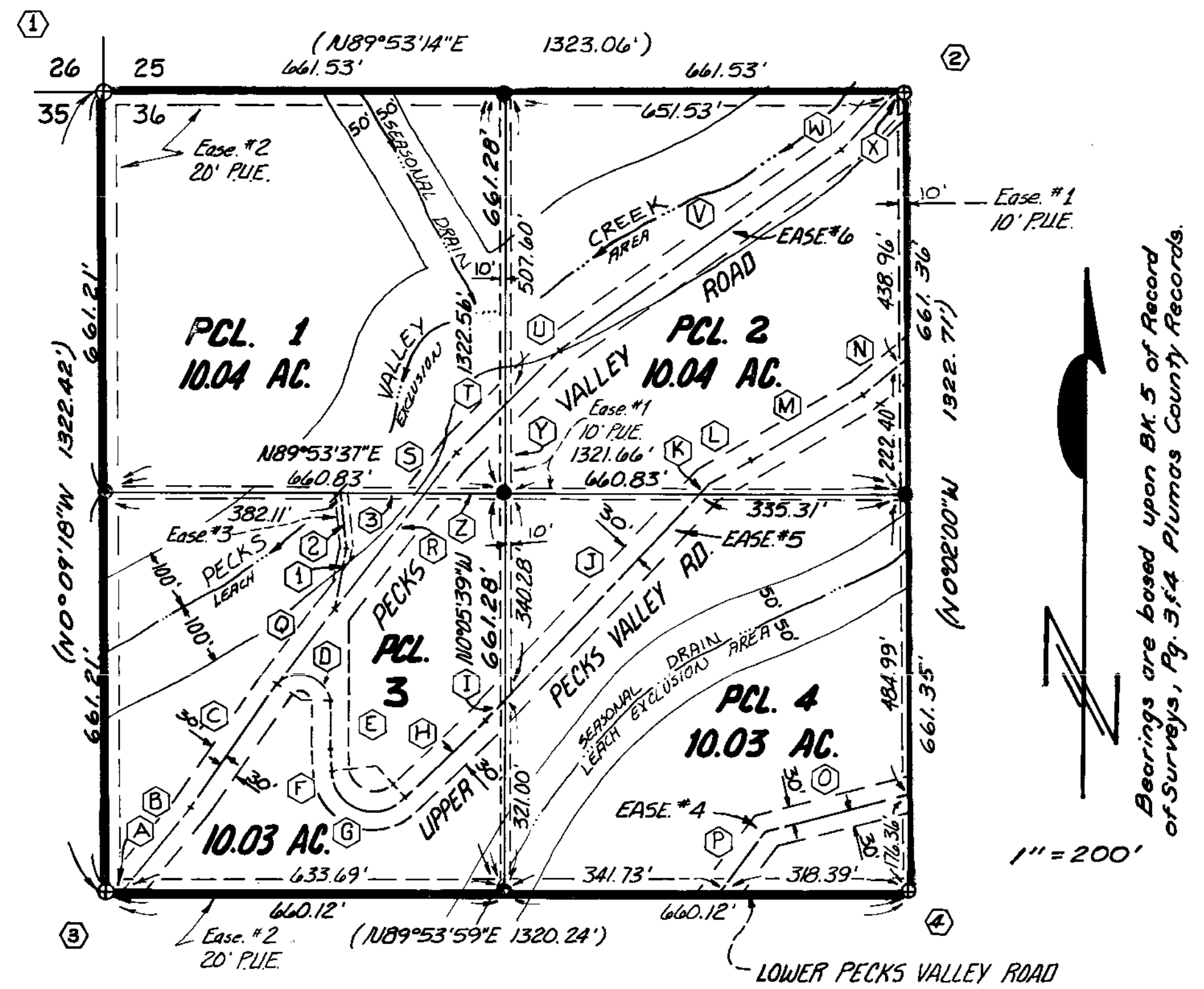
- ① Section Corner 25, 26, 35 f. 36. Found a 1" iron pipe w/ tag mkd. L.S. 3202 in mound of stone at intersection of fences.
- ② WEST 1/4 Corner Section 25 f. 36. Found a 5/8" rebar with alum. cap mkd. L.S. 4036 per bk. 5, Record of Surveys, Pg. 3 f. 4.
- ③ North 1/4 Corner Section 35 f. 36. Position calculated by single proportion. Nothing set. A found 1" iron pipe w/ tag mkd. L.S. 3202 bears N78°34'00"E, 0.48' per bk. 5, R. of S., pg. 3 f. 4.
- ④ North West 1/4 Corner Section 36. Found a 5/8" rebar with alum. cap mkd. L.S. 4036 per bk. 5, Record of Surveys, Pg. 3 f. 4.



IN THE UNINCORPORATED TERRITORY OF PLUMAS COUNTY, STATE OF CALIFORNIA
ASTRO SURVEY & ENGINEERING
 P.O. BOX 624
 FALL RIVER MILLS, CALIF. 96028
 Oct. 1978 SCALE: 1" = 200'

NOTE
 Each exclusion area include,
 50' from drainage channels & springs,
 50' from lot lines, 100' from wells,
 all slopes greater than 30%.

Ease #1 includes all Public Utility Ease. 10.00' in width.
 Ease #2 includes all Public Utility Ease. 20.00' in width.



1" = 200'

Bearings are based upon Bk. 5 of Record of Surveys, Pg. 3 f. 4. Plumas County Records.

A N89°53'59"E 26.43'	G R=75' Δ=131°56'54" L=172.72'	N N49°54'23"E 88.96'	V N54°19'32"E 571.25'
B N38°51'47"E 183.29'	H N44°33'15"E 192.05'	O 575°02'37"W 250.42'	W N46°35'36"E 139.34'
C N34°59'07"E 244.25'	I N43°37'47"E 38.92'	P 534°12'46"W 135.78'	X N89°53'14"E 10.00'
D R=50' Δ=148°50'26" L=129.89'	J N43°37'47"E 470.95' } 534.48'	Q N34°59'07"E 154.61'	Y N0°05'39"W 153.68'
E 503°49'33"W 71.18'	K N43°37'47"E 24.61' }	R N37°03'37"E 241.38' } 326.32'	Z N89°53'37"E 143.44'
F 503°29'51"E 34.73'	L N58°54'05"E 69.28'	S N37°03'37"E 84.94' }	1 N14°45'57"E 102.51'
	M N59°33'34"E 221.33'	T N46°52'35"E 126.04' }	2 N9°42'03"W 94.60'
		U N46°52'35"E 117.03' }	3 N89°53'37"E 135.28'

COUNTY SURVEYOR'S CERTIFICATE

THIS MAP CONFORMS WITH THE REQUIREMENTS OF THE "SUB-DIVISION MAP ACT" AND LOCAL ORDINANCE.
 DATED: Dec 21 1978.
 SIGNED: *Stephen W. Dean* BY: *Raynelle Staten*
 PLUMAS COUNTY SURVEYOR DEPUTY

RECORDER'S CERTIFICATE

FILED THIS 21st DAY OF December, 1978 AT 2:17 P. M.
 IN BOOK 6 OF PARCEL MAPS AT PAGE 104 AT THE
 REQUEST OF The County Engineer FEE: 5.00
 SIGNED: *Raynelle Staten* BY: *Mildred Cotton*
 PLUMAS COUNTY RECORDER DEPUTY

SURVEYOR'S CERTIFICATE

THIS MAP WAS PREPARED BY ME, OR UNDER MY DIRECTION, (AND IS BASED ON A FIELD SURVEY) IN CONFORMANCE WITH THE REQUIREMENTS OF THE "SUBDIVISION MAP ACT" AT THE REQUEST OF: Robert Pershing ON Oct. 3 1978. I HEREBY STATE THAT THE PARCEL MAP PROCEDURES OF THE LOCAL AGENCY HAVE BEEN COMPLIED WITH, AND THAT THIS PARCEL MAP CONFORMS TO THE APPROVED TENTATIVE MAP AND THE CONDITIONS OF APPROVAL THEREOF, WHICH WERE REQUIRED TO BE FULFILLED PRIOR TO THE FILING OF THE PARCEL MAP.
 SIGNED: *Stephen W. Dean* STEPHEN W. DEAN L.S. 4036 SHEET 1 OF 1