

BASIS OF BEARINGS

THE BASIS OF BEARINGS OF THIS PARCEL MAP IS THE NORTH LINE OF SECTION 11, T23N, R7E AS SHOWN ON 4 RS150 AND CALCULATED FROM "CORNER RECORD" INFORMATION.

NOTES

- CERTIFICATE OF OWNERS CONSENT TO THE PREPARATION AND RECORDATION OF THIS MAP DATED OCT. 17, 1978, IS ON FILE IN THE OFFICE OF THE COUNTY ENGINEER
- LEACH EXCLUSION AREAS SHALL INCLUDE ALL AREAS WITH SLOPES STEEPER THAN 30%; ALL AREAS WITHIN 50' OF A PROPERTY LINE, ALL AREAS WITHIN 50' OF A SEASONAL DRAINAGE AND MARSHY MEADOWS.

ENGINEER'S CERTIFICATE

THIS MAP WAS PREPARED BY ME OR UNDER MY DIRECTION AND IS BASED UPON A FIELD SURVEY IN CONFORMANCE WITH THE REQUIREMENTS OF THE SUBDIVISION MAP ACT AT THE REQUEST OF HAZEL STEVENSON IN SEPTEMBER OF 1978. I HEREBY STATE THAT THE PARCEL MAP PROCEDURES OF THE LOCAL AGENCY HAVE BEEN COMPLIED WITH AND THAT THIS PARCEL MAP CONFORMS TO THE APPROVED TENTATIVE MAP AND THE CONDITIONS OF APPROVAL THEREOF WHICH WERE REQUIRED TO BE FULFILLED PRIOR TO THE FILING OF THE PARCEL MAP.

Joseph G. Brandt
JOSEPH G. BRANDT R.C.E. 26870

COUNTY SURVEYOR'S CERTIFICATE

THIS MAP CONFORMS WITH THE REQUIREMENTS OF THE SUBDIVISION MAP ACT AND LOCAL ORDINANCE.

12-27-78 (by) *Clifford R. Brown* 208 22836
DATED PLUMAS COUNTY SURVEYOR

COUNTY TAX COLLECTOR'S CERTIFICATE

I, TAX COLLECTOR OF THE COUNTY OF PLUMAS, STATE OF CALIFORNIA, DO HEREBY CERTIFY THAT THERE ARE NO TAX LIENS AGAINST THE PARCELS, AS SHOWN HEREON, FOR UNPAID COUNTY, MUNICIPAL, OR LOCAL TAXES OR SPECIAL ASSESSMENTS COLLECTED AS TAXES, EXCEPT TAXES OR ASSESSMENTS NOT YET PAYABLE. TAXES OR ASSESSMENTS WHICH ARE A LIEN BUT NOT YET PAYABLE ARE ESTIMATED TO BE IN THE AMOUNT OF \$ NONE.

Lois Alexander
LOIS ALEXANDER
PLUMAS COUNTY TAX COLLECTOR

COUNTY RECORDER'S CERTIFICATE

FILED THIS 28th DAY OF December, 1978, AT 2:50 P.M. IN BOOK 6 OF PARCEL MAPS AT PAGE 107, AT THE REQUEST OF THE COUNTY ENGINEER.

RAYNELLE SLATEN
COUNTY RECORDER

FEE \$ 5.00
FILE NO. 5574

BY *Isabelle Andrews*
DEPUTY

PARCEL MAP

OF
A SUBDIVISION OF ONE PARCEL
WITHIN
SECTIONS 2 & 11, T23N, R7E, M.D.M.

PLUMAS COUNTY, CALIFORNIA

FOR
HAZEL STEVENSON
brandt & associates
CIVIL ENGINEERS ~ SURVEYORS

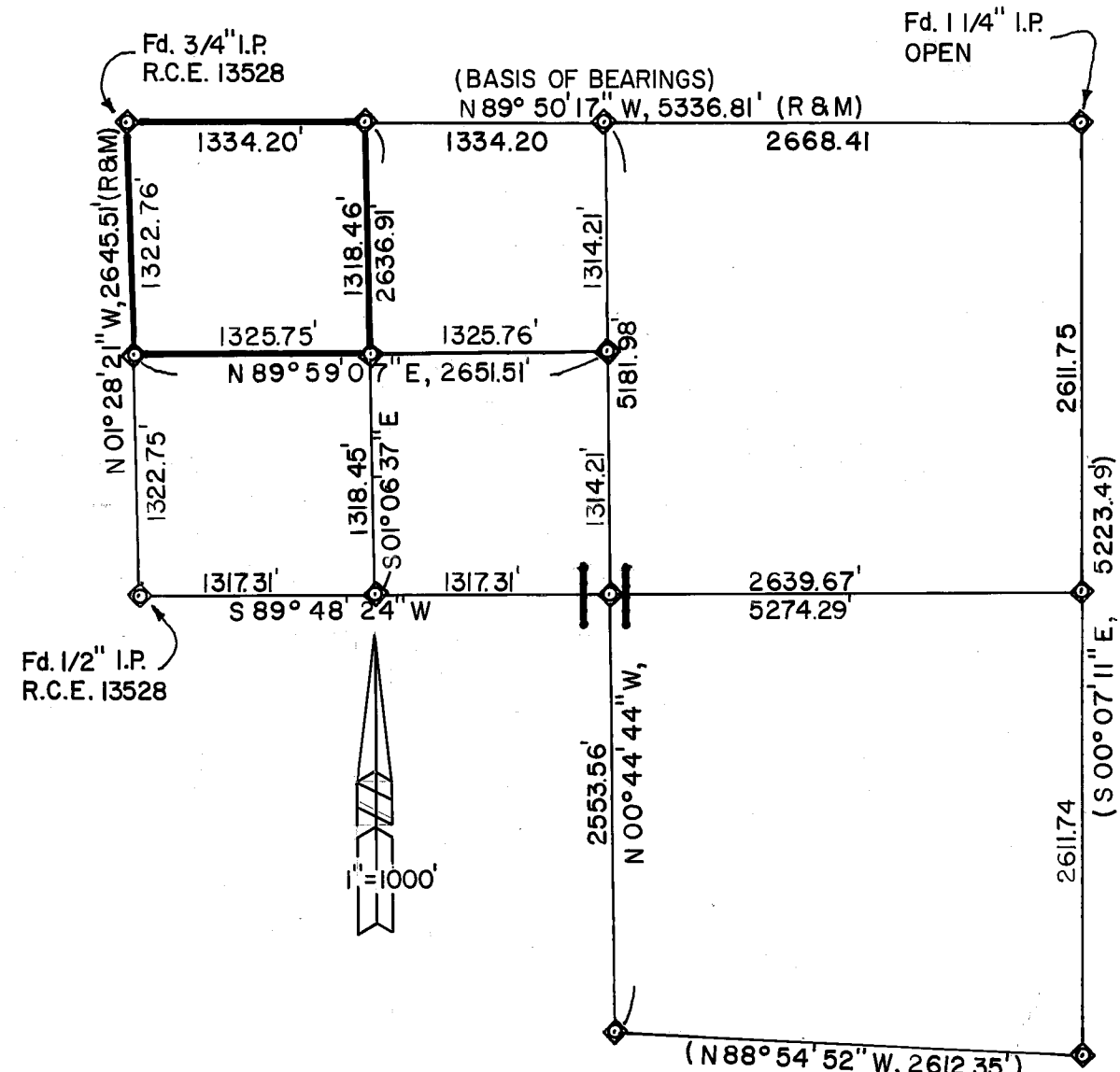
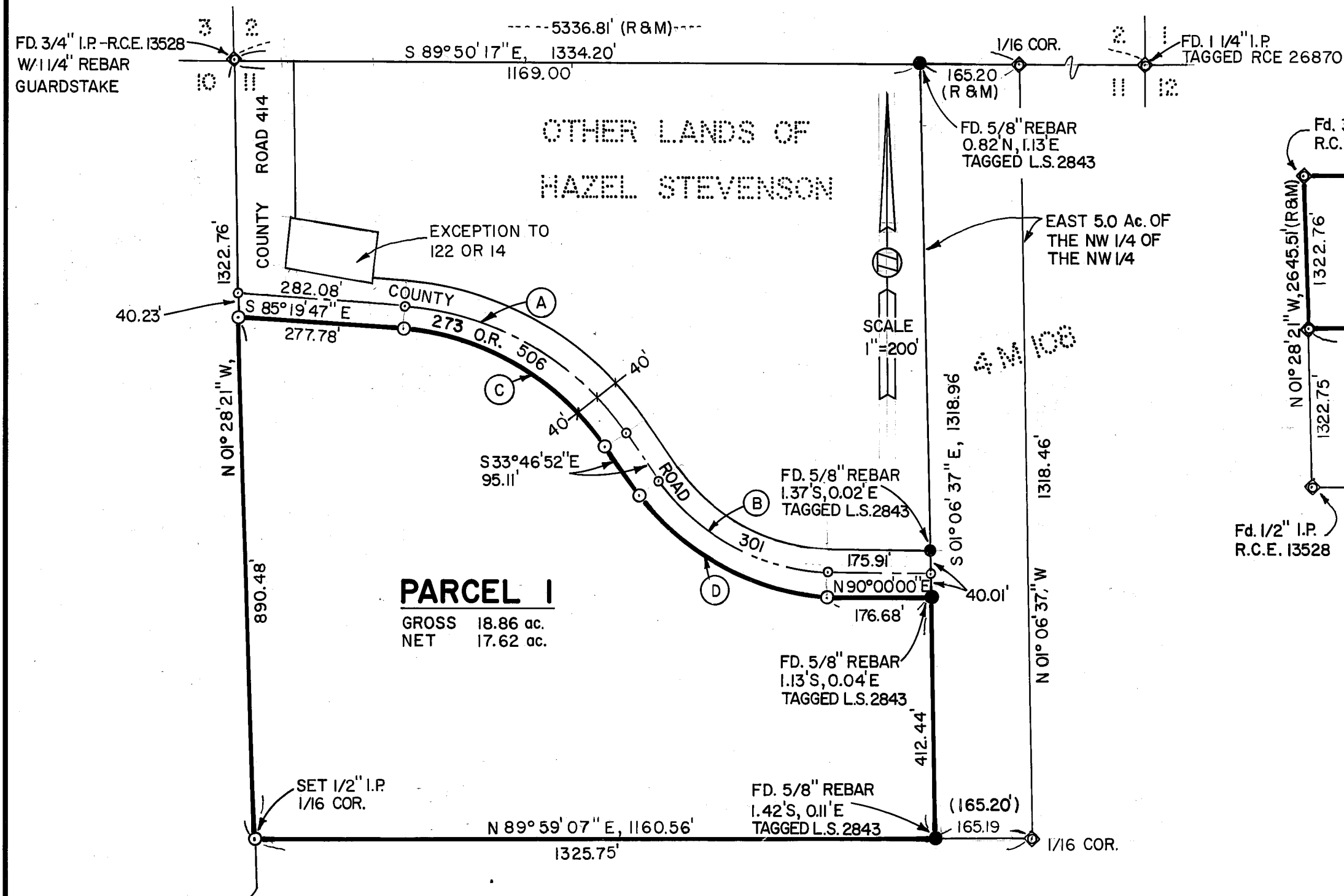
75 COURT STREET
QUINCY, CALIFORNIA 95971

P.O. BOX 749
916-283-1111

W.O. No. 780903

DATE: DEC, 1978

SHEET 1 OF 1



SUBDIVISION OF SECTION II,
T23N, R7E

PARCEL I
GROSS 18.86 ac.
NET 17.62 ac.

Curve Data

△=51° 32' 55"	△=51° 32' 55"
(A) R = 500'	(C) R = 460'
L = 449.85'	L = 413.86'
△=56° 13' 08"	△=56° 13' 08"
(B) R = 350'	(D) R = 390'
L = 343.42'	L = 382.67'

- Legend**
- FD. POINT AS NOTED
 - SET 1/2" I.P. TAGGED R.C.E. 26870
 - RD. Q. POINT, NOT SET
 - ◆ SEC. COR. AS CALCULATED FROM CORNER RECORDS ON FILE IN THE OFFICE OF THE COUNTY ENGINEER UNLESS OTHERWISE NOTED.