

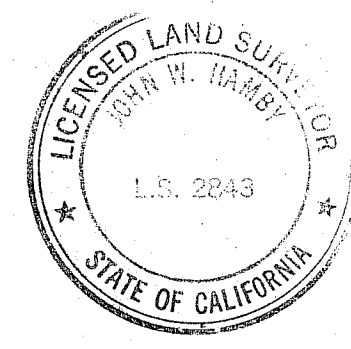
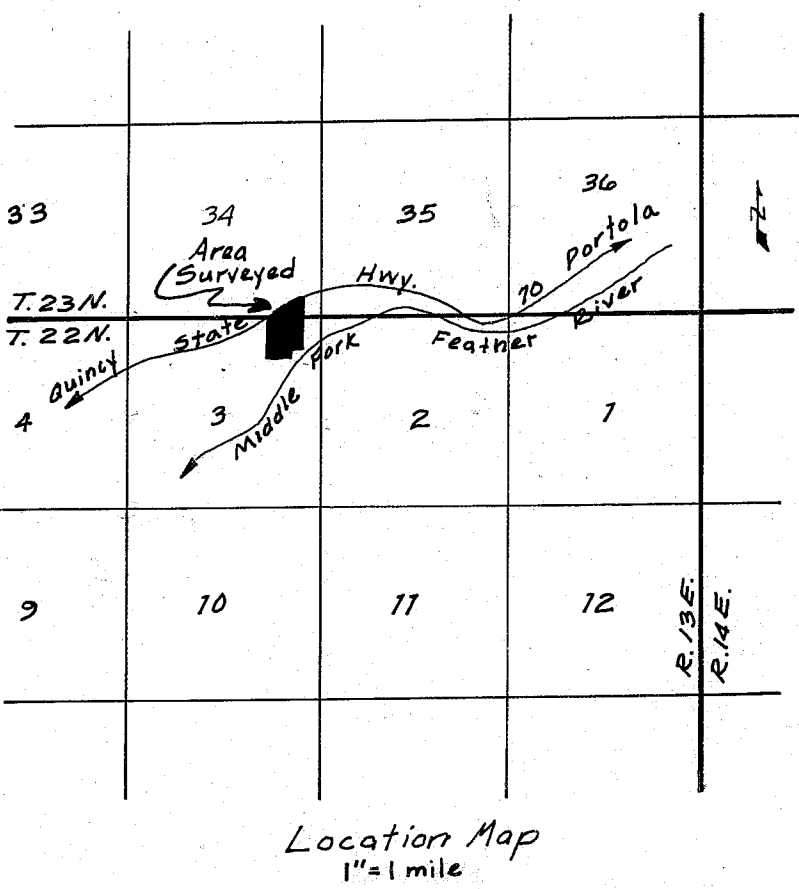
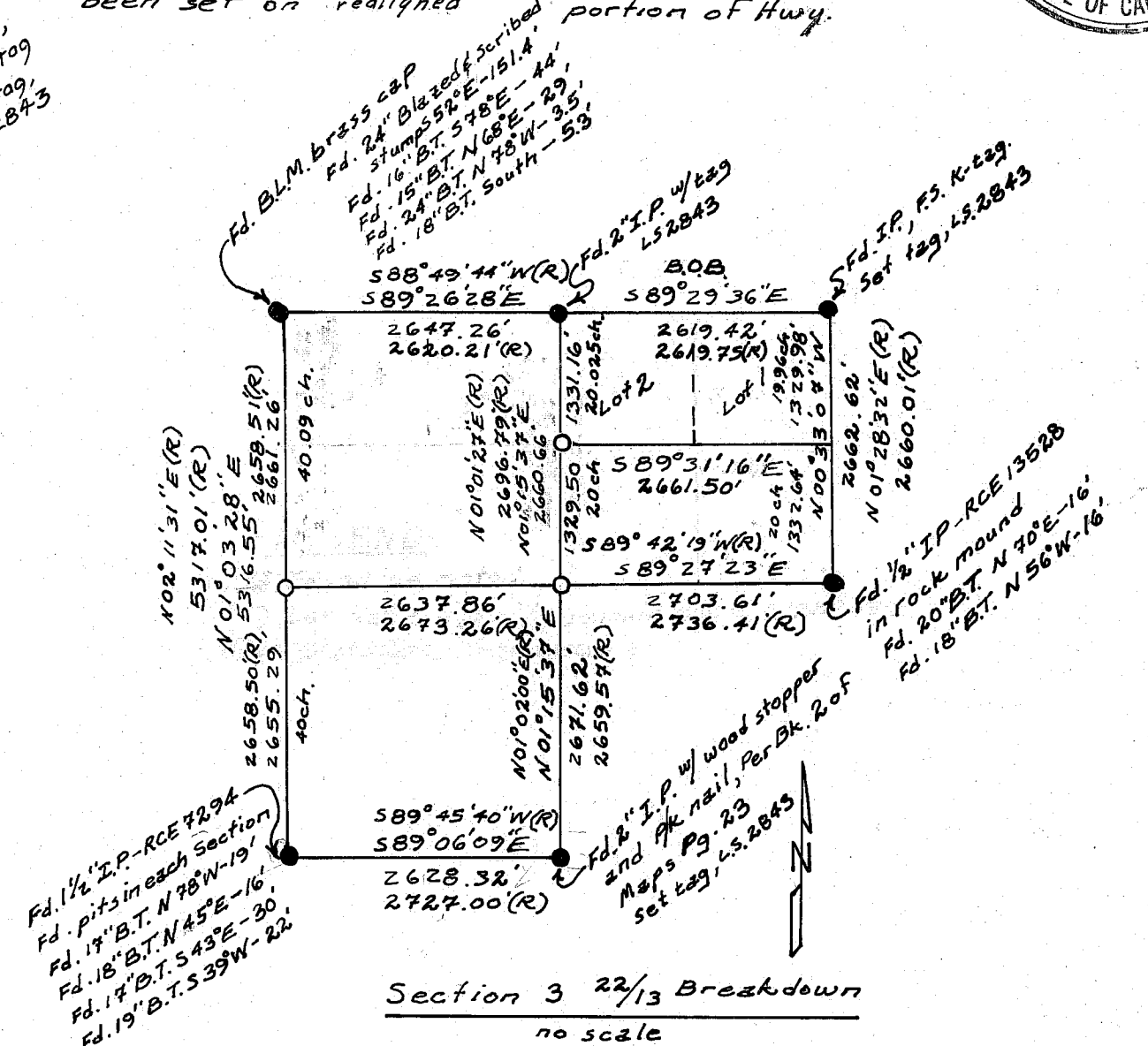
1/4 Corner Sec. 3  
 Fd. 2" I.P., Per BK. 2 Maps 23  
 Set Tag, L.S. 2843

Scale 1" = 200'

**LEGEND**  
 ● Found point as noted  
 ○ Set rebar & cap, L.S. 2843  
 (R) Record Dimension Per 3 P.M. 9

**BASIS OF BEARINGS**  
 The North line of the NE 1/4 of Section 3 is assumed as S 89° 29' 36" E per. 3 P.M. 9 of Plumas County Records.

**NOTES**  
 Certificate of owner's consent to preparation and filing of this map on file in the county engineer's office dated 6/7/78.  
 All lots shown hereon shall be serviced by a community sewage system.  
 State Highway 70 was tied using state Highway field ties, no monuments have been set on realigned portion of Hwy.



**SURVEYOR'S CERTIFICATE**  
 This map was prepared by me or under my direction and is based upon a field survey in conformance with the requirements of the Subdivision Map Act at the request of Bowers, Clark, et al on June 7, 1978. I hereby state that the parcel map procedures of the local agency have been complied with and that this parcel map conforms to the approved tentative map and the conditions of approval thereof, which were required to be fulfilled prior to the filing of the parcel map.

John W. Hamby  
 John W. Hamby L.S. 2843

**COUNTY SURVEYOR'S CERTIFICATE**  
 This map conforms with the requirements of the Subdivision Map Act and local ordinance.  
 Date: JAN 11, 1979. Clifford R. Brown  
 Clifford R. Brown RCE 22836  
 Asst. Plumas County Engineer

**COUNTY TAX COLLECTOR'S CERTIFICATE**  
 I, Tax Collector of the County of Plumas, State of California, do hereby certify that there are no tax liens against the parcels, as shown hereon, for unpaid county, local, or municipal taxes or special assessments collected as taxes, except taxes or assessments not yet payable. Taxes or assessments which are a lien but not yet payable, are estimated to be in the amount of \$ NONE.

Lois Alexander  
 Lois Alexander  
 Plumas County Tax Collector

**RECORDER'S CERTIFICATE**  
 Filed this 11<sup>th</sup> day of January, 1979, at 2:05 P.M. in Book 6 of Parcel Maps at page 111 at the request of the County Engineer.

File No: 5899  
 Fee \$ 5.00

Raynelle Sloten  
 County Recorder  
 by Isabelle Andrewe  
 Deputy

**PARCEL MAP FOR PLUMAS-SIERRA RENTALS**  
 OF A PORTION NE 1/4 SECTION 3, T.23 N., R.13 E. & SE 1/4 SECTION 34, T.23 N., R.13 E, MDB&M IN PLUMAS COUNTY, CALIFORNIA. SEP 5, 1978

BY  
 JOHN W. HAMBY L.S. 2843  
 LICENSED LAND SURVEYOR  
 P.O. BOX 842, 832-5571  
 PORTOLA, CALIFORNIA  
 SHEET 1 OF 1